



YOSHIMURA

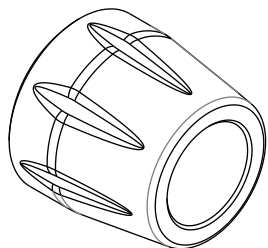
RESEARCH&DEVELOPMENT OF AMERICA, INC.

5420 DANIELS STREET STE A, CHINO CALIF. 91710 · (800)634-9166 · (909)628-4722 · FACSIMILE (909)591-2198

www.yoshimura-rd.com

020HA152010 BAR END KIT

NO.	DESCRIPTION	QTY	PART #
1	Yoshimura Bar End	2	020HA152010F
**	Yoshimura Sticker	2	17020C
**	Installation Instruction	1	INST KIT



Installation Instructions

1. Remove stock bar end weights.
2. Install Yoshimura bar ends. Torque to 48 ft-lbs (66 N-m).



YOSHIMURA

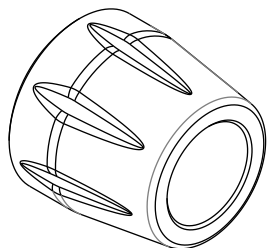
RESEARCH&DEVELOPMENT OF AMERICA, INC.

5420 DANIELS STREET STE A, CHINO CALIF. 91710 · (800)634-9166 · (909)628-4722 · FACSIMILE (909)591-2198

www.yoshimura-rd.com

020HA152010 BAR END KIT

NO.	DESCRIPTION	QTY	PART #
1	Yoshimura Bar End	2	020HA152010F
**	Yoshimura Sticker	2	17020C
**	Installation Instruction	1	INST KIT



Installation Instructions

1. Remove stock bar end weights.
2. Install Yoshimura bar ends. Torque to 48 ft-lbs (66 N-m).