



# YOSHIMURA

RESEARCH & DEVELOPMENT OF AMERICA, INC.

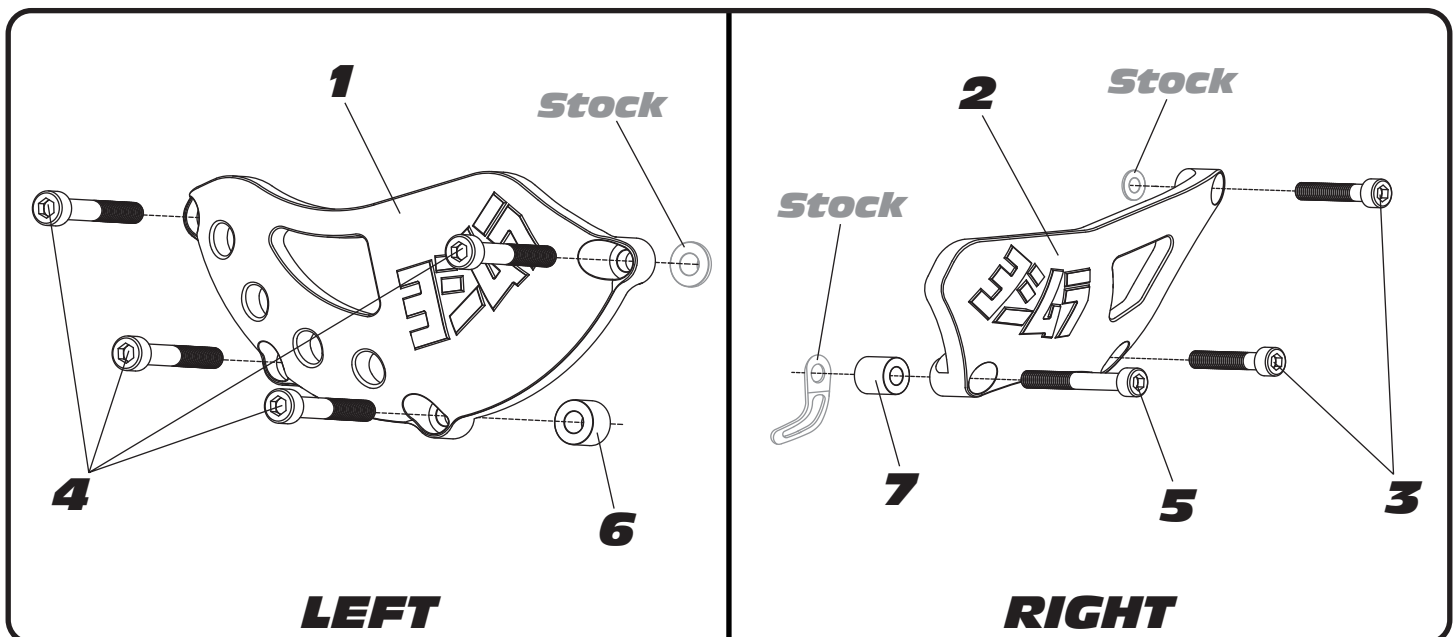
5420 DANIELS STREET STE A, CHINO CALIF. 91710 · (800) 634-9166 · (909) 628-4722 · FACSIMILE (909) 591-2198

[www.yoshimura-rd.com](http://www.yoshimura-rd.com)

## YOSHIMURA CASE SAVER KIT

**SUZUKI**  
**GSX-S1000**  
**GSX-S1000F**

**030HA111000**



### Part List:

NO.	DESCRIPTION	QTY	PART #
1	Left Case Saver	1	030HA111000L
2	Right Case Saver	1	030HA111000R
3	6mm x 35mm Socket Head Cap Bolt	2	M6X35
4	6mm x 45mm Socket Head Cap Bolt	4	M6X45
5	6mm x 50mm Socket Head Cap Bolt	1	M6X50
6	Aluminum Spacer	1	6X13X10SPCRHA
7	Aluminum Spacer	1	6X13X14.5SPCRHA
**	Yoshimura Sticker	1	17029

Yoshimura Case Savers are designed to reduce damage to the engine cases in the event of a light or mild crash ONLY. The Case Savers are not designed to prevent damage to the engine cases completely, nor are they designed to prevent damage to fairings or body work.

**Read through all instructions before beginning installation and be sure to prepare a clean work area. Take necessary safety precautions to ensure a safe working environment. Always use a bike stand whenever available.**

## **Tools Required:**

Metric Socket Set  
Ratchet and Extension  
Metric Allen Socket Set  
Torque Wrench

## **Installation Steps:**

1. Remove the four left side engine cover bolts.

*Note*<sup>1</sup>: Do not remove engine cover.

*Note*<sup>2</sup>: Re-install the stock washer as shown on the diagram.

2. Install Yoshimura left side case saver using the four supplied 6mm x 45mm bolts and spacer as shown on the diagram on page 1.
3. Torque bolts to factory specification.
4. Remove the three right side engine cover bolts.

*Note*: Do not remove engine cover.

5. Install Yoshimura right side case saver using the supplied bolts and spacer as shown on the diagram on page 1.

*Note*<sup>1</sup>: The 6mm x 50mm bolt is toward the rear.

*Note*<sup>2</sup>: The stock wire clamp must be re-installed between the engine cover and spacer.

*Note*<sup>3</sup>: Re-install the stock washer as shown on the diagram.

6. Torque bolts to factory specification.

