



# YOSHIMURA

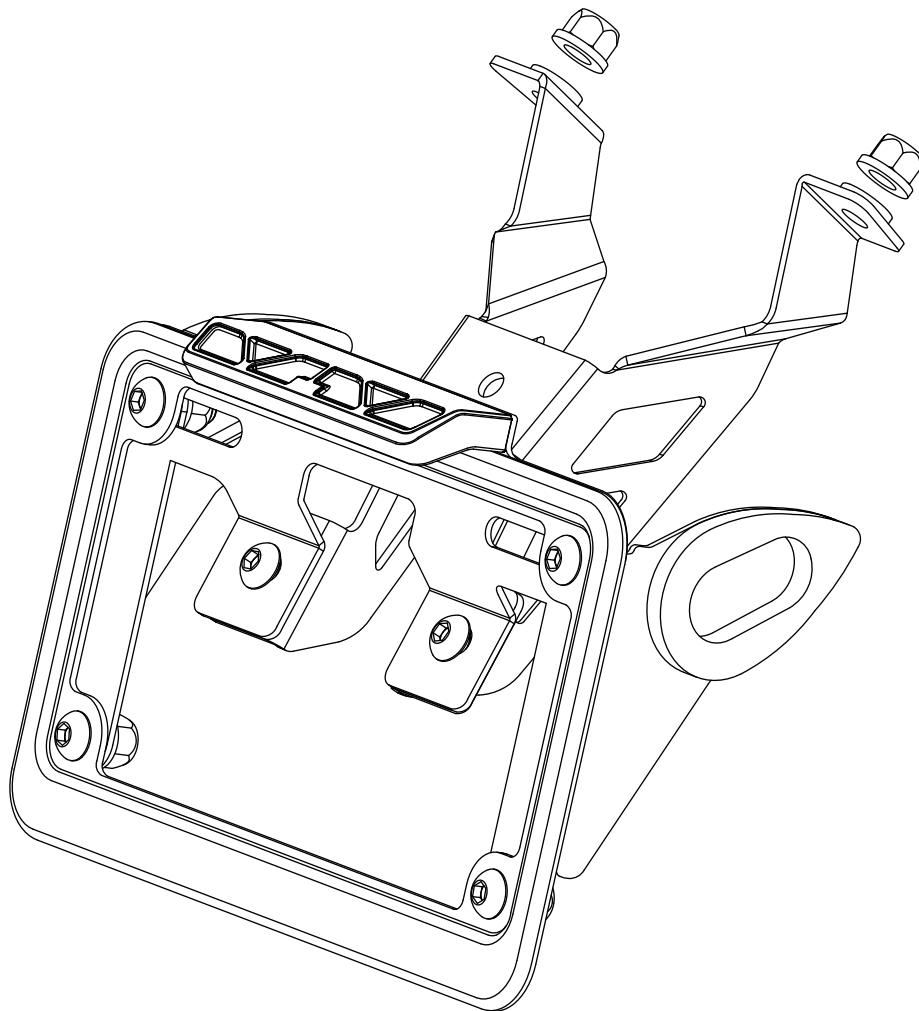
RESEARCH&DEVELOPMENT OF AMERICA, INC.

5420 DANIELS STREET STE A, CHINO CA., 91710 · (800)634-9166 · (909)628-4722 · FACSIMILE (909)591-2198

[www.yoshimura-rd.com](http://www.yoshimura-rd.com)

## **FENDER ELIMINATOR KIT**

**070BG121010**  
**Honda CB1000R**

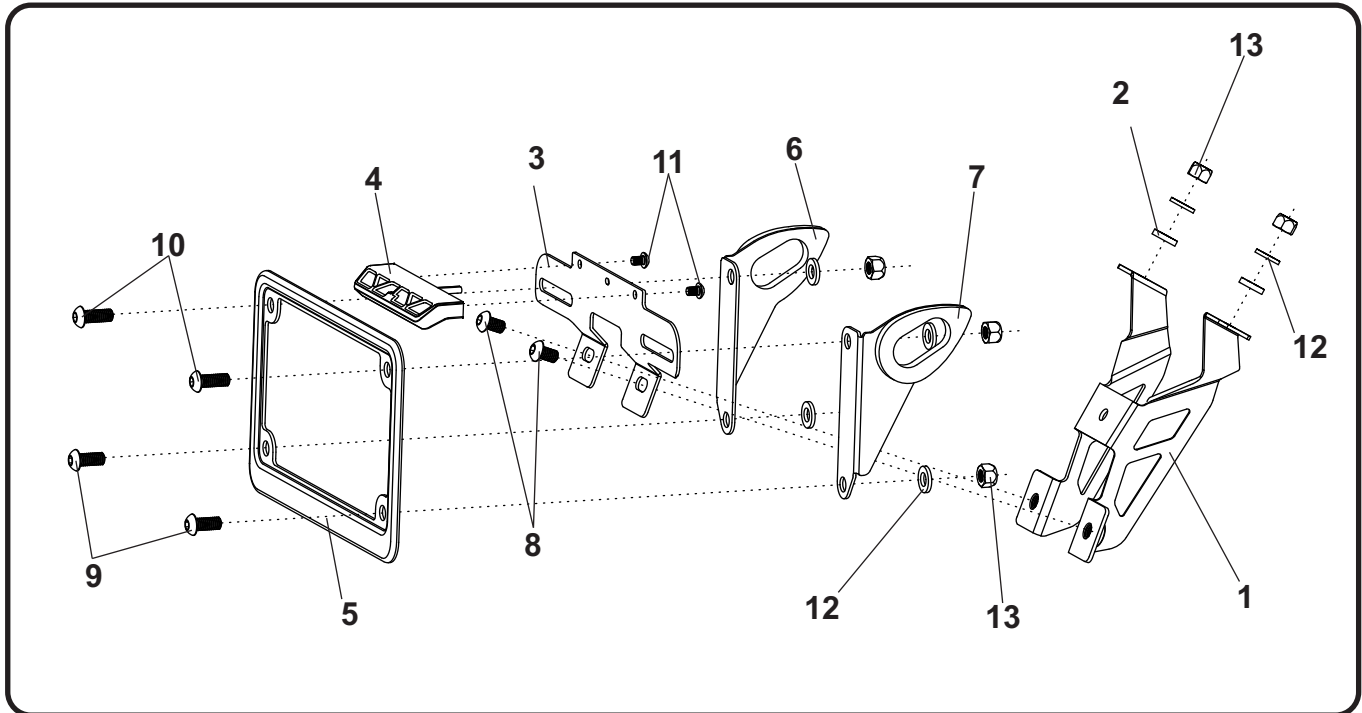


**THIS PRODUCT IS NOT DOT APPROVED.**

Yoshimura R&D of America, Inc. is not liable or responsible for any resulting event caused by the installation of this product. Check with local laws and regulations for compliance prior to installation and use. This product is not intended for use on public highways.



## Assembly Diagram



No.	Item	Description	Qty.
1	12101-FEBKT	Fender Eliminator Bracket	1
2	12101-SPCR	FE Spacer 0.5" OD 0.24" ID	2
3	12200-FEBKT	12200 FE Bracket	1
4	070BG-LH-K1	LED License Plate Light	1
5	070BG-LPF	License Plate Frame	1
6	12200-TSB-L	Left Turn Signal Bracket	1
7	12200-TSB-R	Right Turn Signal Bracket	1
8	M6X10BHS	6mm x 10mm Button Head Screw	2
9	M6X14BHS	6mm x 14mm Button Head Screw	2
10	M6X16BHS	6mm x 16mm Button Head Screw	2
11	M4X6BHS	4mm x 6mm Button Head Screw	2
12	6MMWASHER	6mm Washer	6
13	6MMLN	6mm Nylon Lock Nut	6
**	BN-SSS-22-18	Solder Shrink Connectors	2
**	17029	Yoshimura Sticker Sheet	1
<b>Optional Parts</b>			
***	070BGUNVTBKT	Universal Turn Signal Bracket Kit	

\*\* Not shown on diagram.

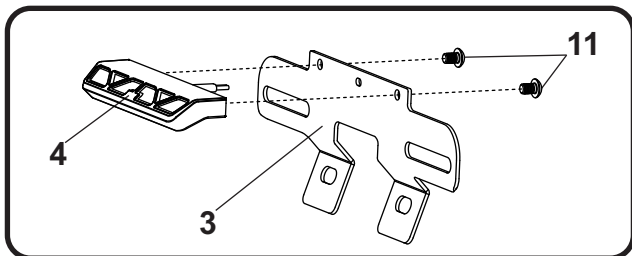
\*\*\* The Yoshimura Universal Turn Signal Bracket Kit is to be used with aftermarket stud-mounted turn signals and is sold separately.

## Removal

1. Remove passenger and rider seat.
  2. Locate and disconnect license plate light and turn signal connectors.
- Note: License plate wire routes on the inside of the swing arm. The wire is held by two clips behind the rear tire.
3. Remove rear wheel (Follow steps in Factory Service Manual to remove rear wheel ).
  4. While securely supporting the stock fender assembly, remove the three bolts securing the fender assembly to the swing arm. Carefully remove the stock fender assembly making sure not to damage connectors in the process.
  5. Re-install rear wheel using reverse steps of removal.
  6. Remove left and right turn signals from the stock fender assembly.
  7. Cut the stock license plate light connector from the stock fender assembly. Be sure to cut at least a 24" section of wire from the connector.

## Installation

1. Install (No. 4) *070BG-LH-K1*, license plate light onto (No. 3) *12200-FEBKT*, fender eliminator bracket using (No. 11) *M4X6BHS*, 4mm screws.



2. Using the *BN-SSS-22-18* solder shrink connectors provided in the kit, connect the Yoshimura license plate light wires to the stock license plate light wires as follows:

Red -to- Brown  
Black -to- Green

- a) Strip the stock fender light wire ends 1/4" - 1/2" and insert into *BN-SSS-22-18*, solder shrink connectors provided in the kit.
- b) Center the spliced wire ends in the middle and using a heatgun or lighter, apply heat evenly on the outer edges of

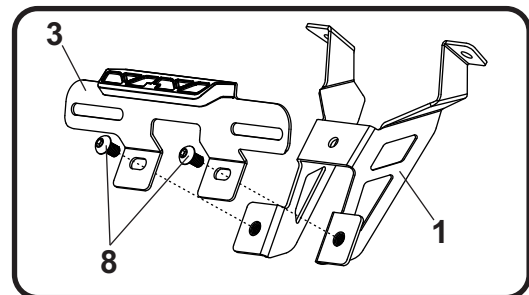
the butt connector to shrink and hold wires in place.

- c) Making sure that the stripped ends are centered, heat the center of the solder shrink connector evenly until the solder begins to liquify.
- d) Allow to cool completely and tug both ends of the wires to verify that connection is secured.

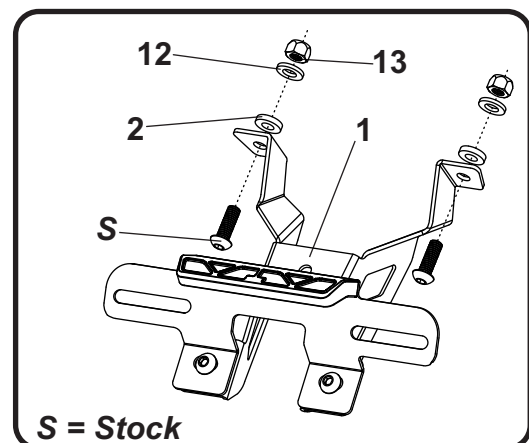
Scan for link to solder shrink connector instruction video



3. Install (No. 1) *12101-FEBKT*, fender eliminator bracket onto (No. 3) *12200-FEBKT*, fender eliminator bracket using (No. 8) *M6X10BHS*, 6mm screws.

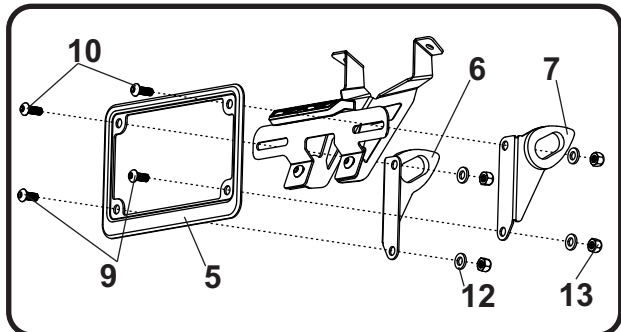


4. Secure and install (No. 1) *12101-FEBKT*, fender eliminator bracket to subframe using *Stock* 6mm button head screws and (No. 2) *12101-SPCR*. Install (No. 12,13) *6MMWASHER* and *6MMLN*, 6mm washer and nut from above as shown.



5. Install stock rear turn signals onto (No. 6,7) *12200-TSB-L/R*, left and right turn signal brackets using the stock hardware.

6. Install (No. 6,7) *12200-TSB-L/R*, left and right turn signal brackets and (No. 5) *070BG-LPF*, license plate frame to (No. 1) *12101-FEBKT*, fender eliminator bracket using the (No. 9,10) *M6X14BHS* and *M6X16BHS*, 6mm button head screws and (No. 12,13) *6MMWASHER*, *6MMLN*, washer and nut as shown.



7. Re-connect license plate light and turn signal connectors.
8. Re-install passenger seat.
9. Check for proper function of license plate light and turn signals and that all brackets and components are secure prior to riding.