



YOSHIMURA

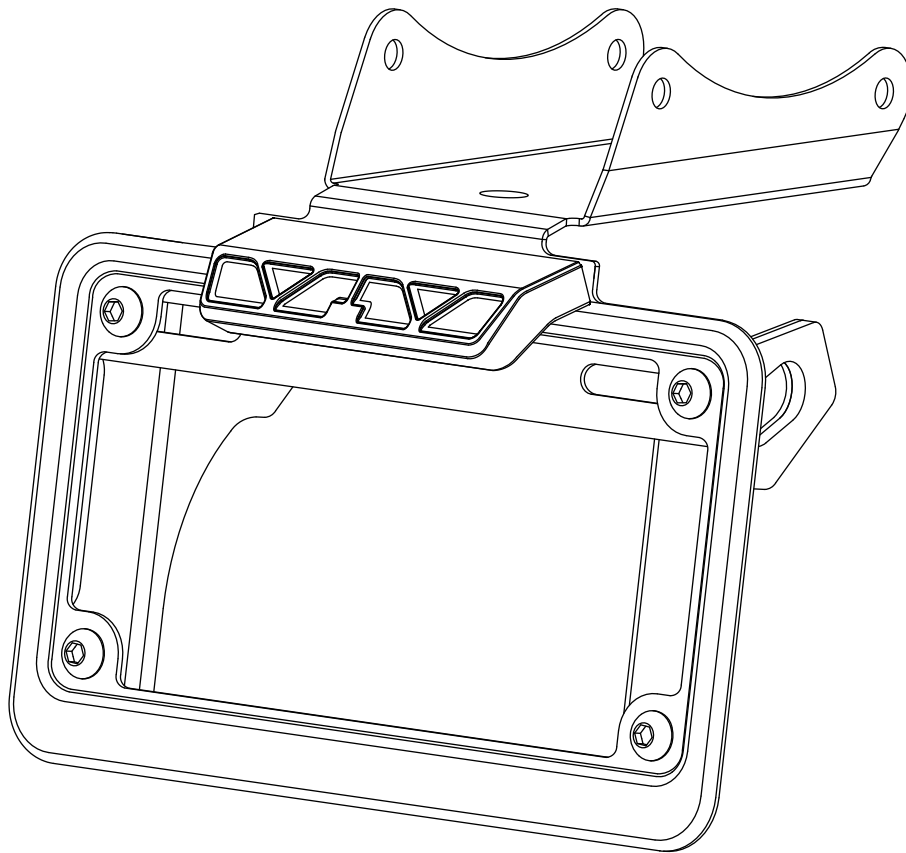
RESEARCH&DEVELOPMENT OF AMERICA, INC.

5420 DANIELS STREET STE A, CHINO CA., 91710 · (800) 634-9166 · (909) 628-4722 · FAX (909) 591-2198

www.yoshimura-rd.com

FENDER ELIMINATOR KIT

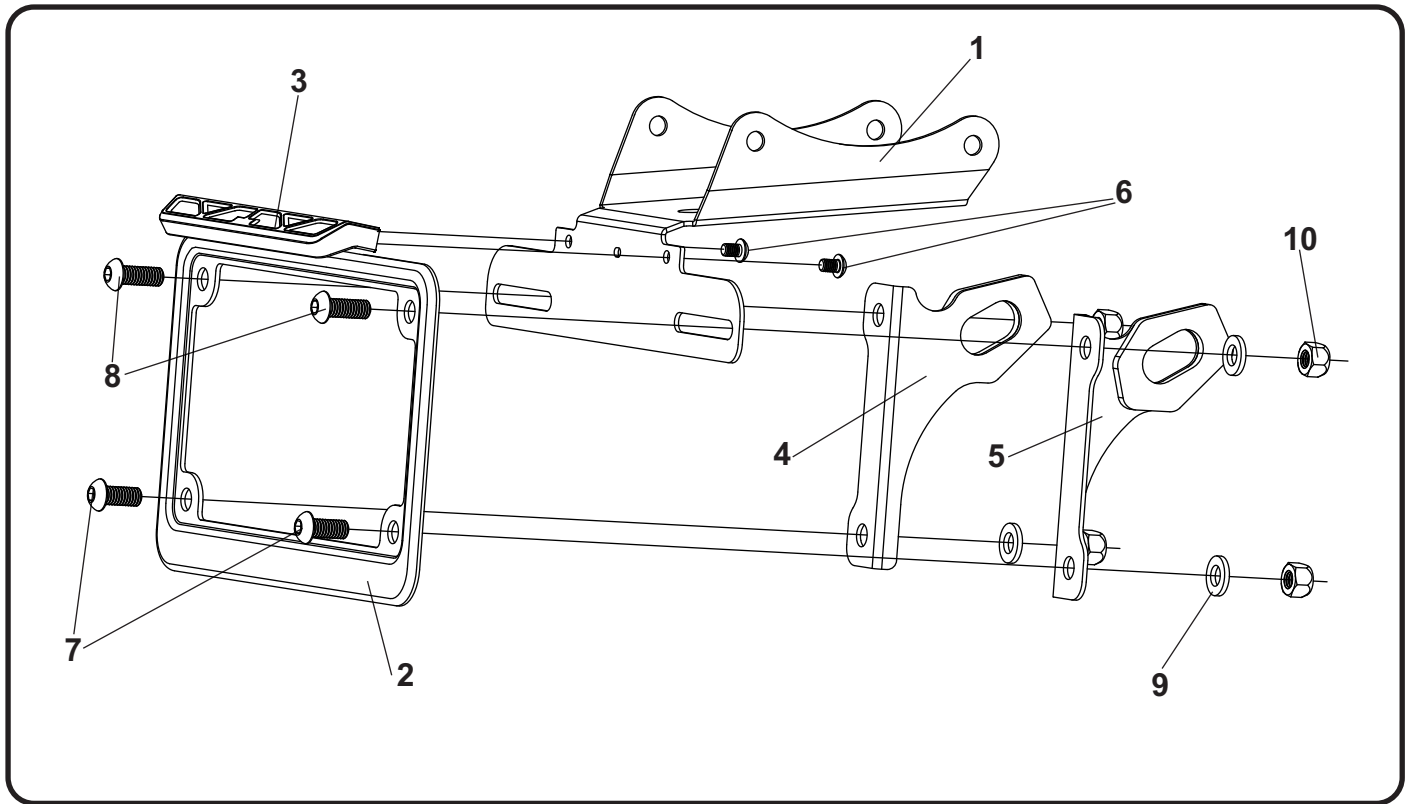
070BG122021
Honda CBR1000RR



THIS PRODUCT IS NOT DOT APPROVED.
Yoshimura R&D of America, Inc. is not liable or responsible for any resulting event caused by the installation of this product. Check with local laws and regulations for compliance prior to installation and use. This product is not intended for use on public highways.



Assembly Diagram



No.	Item	Description	Qty.
1	12202-FEBKT	Fender Eliminator Bracket	1
2	070BG-LPF	License Plate Frame	1
3	070BG-LH-K1	LED License Plate Light	1
4	12202-TSB-L	Left Turn Signal Bracket	1
5	12202-TSB-R	Right Turn Signal Bracket	1
6	M4X6BHS	4mm x 6mm Button Head Screw	2
7	M6X14BHS	6mm x 14mm Button Head Screw	2
8	M6X16BHS	6mm x 16mm Button Head Screw	2
9	6MMWASHER	6mm Flat Washer	4
10	6MMLN	M6 x 1.0 Nylon Lock Nut	4
**	BN-SSS-22-18	Butt Connectors	2
**	17029	Yoshimura Sticker Sheet	1
**	ZT-400	Cable Ties	3

** Not shown on diagram.

Removal

1. Remove both rider and passenger seats.
2. Remove the seat strap.
3. Remove the rear upper cowl.
4. Remove the passenger seat latching unit to access two screws that need to be removed in order to let down the rear lower cowl.
5. Let down the rear lower cowl, letting it hang from the stock fender.
6. Locate and disconnect the license plate light and rear turn signal connectors.
7. While supporting the stock fender assembly and lower cowl, remove the four nuts and bolts securing the fender assembly to the frame.

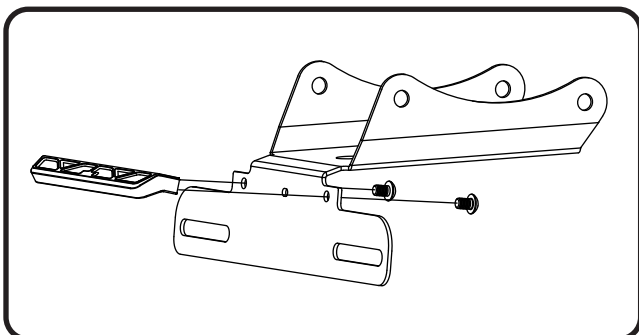
Note: Stock nuts and bolts will be re-used with the Yoshimura fender eliminator.

Note: Take precaution when removing the stock fender assembly and avoid snagging the stock license plate light and turn signal connectors as they will be re-used.

8. Remove left and right turn signals from the stock fender assembly.
9. Cut the stock license plate light connector wires on the stock fender assembly side. Be sure to cut at least a 6" section of wire from the connector.

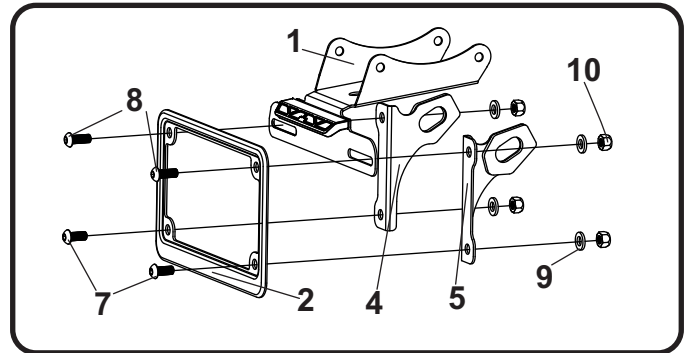
Installation

1. Install (No. 3) *070BG-LH-K1*, Yoshimura license plate light onto (No. 1) *12202-FEBKT*, Yoshimura license plate bracket using (No. 6) *M4X6BHS*, 4mm button head screws as shown below.



2. Install stock left and right turn signals onto (No. 4,5) *12202-TSB-L/R*, turn signal brackets using stock hardware.

3. Install (No. 2) *070BG-LPF*, license plate frame and (No. 4,5) *12202-TSB-L/R*, left and right turn signal brackets using (No. 7,8) *M6X14BHS* and *M6X16BHS*, 6mm button head screws as shown in the diagram below.



4. Route the wires from (No.3) *070BG-LH-K1*, licence plate light up through the hole in (No.1) *12202-FEBKT*, fender eliminator bracket.
5. Using the *BN-SSS-22-18* butt connectors, connect the Yoshimura license plate light wires to the stock license plate light wires as follows:

Brown Wire -to- Red Wire
Green Wire -to- Black Wire

- a) Strip the stock fender light wire ends 1/4" - 1/2" and insert into *BN-SSS-22-18*, butt connectors provided in the kit.
- b) Center the spliced wire ends in the middle and using a heatgun or lighter, apply heat evenly on the outer edges of the butt connector to shrink and hold wires in place.
- c) Making sure that the stripped ends are centered, heat the center of the butt connector evenly until the solder begins to liquify.
- d) Allow to cool completely and tug both ends of the wires to verify that connection is secured.

Scan for link to butt connector instruction video.



6. Route the wires from the stock turn signals up through the hole in (No.1) *12202-FEBKT*, fender eliminator bracket.

7. Slide the lower cowl over Yoshimura fender eliminator then using the four stock nuts and bolts, install Yoshimura fender eliminator. Torque to factory specification.
8. Locate and reconnect the license plate light and rear turn signal connectors.
9. Use the cable ties provided in the kit to secure license plate light and turn signal wires beneath passenger seat.
10. Re-install the seat latching unit.
11. Re-install the upper cowl.
12. Re-install the seat strap.
13. Re-install rider and passenger seat.
14. Check for proper function of license plate light, turn signals, brake light, and that all brackets and components are secure prior to riding.