



YOSHIMURA

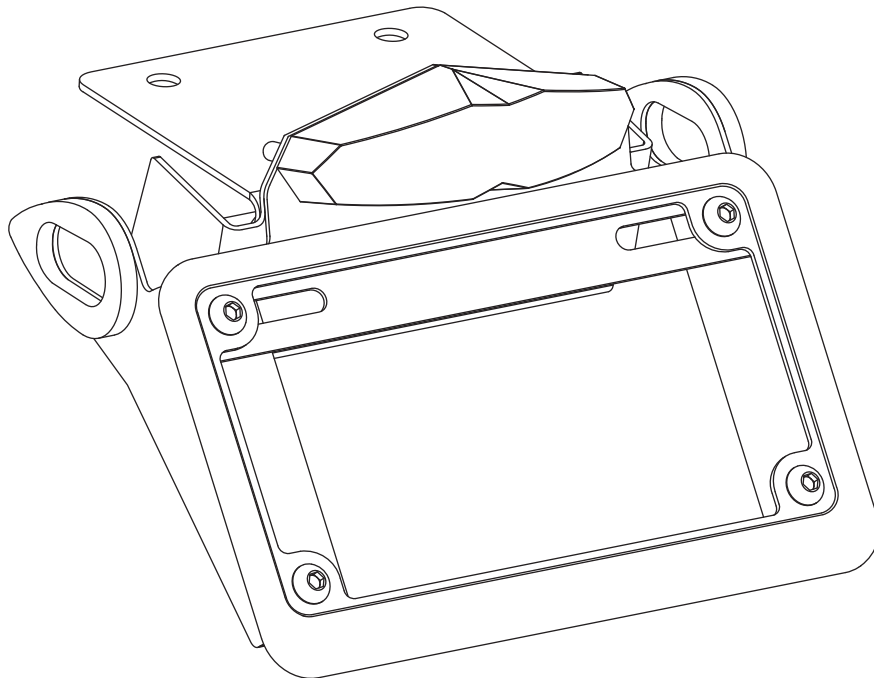
RESEARCH&DEVELOPMENT OF AMERICA, INC.

5420 DANIELS STREET STE A, CHINO CA., 91710 · (800) 634-9166 · (909) 628-4722 · FAX (909) 591-2198

www.yoshimura-rd.com

FENDER ELIMINATOR KIT

070BG123502
Honda CRF250L

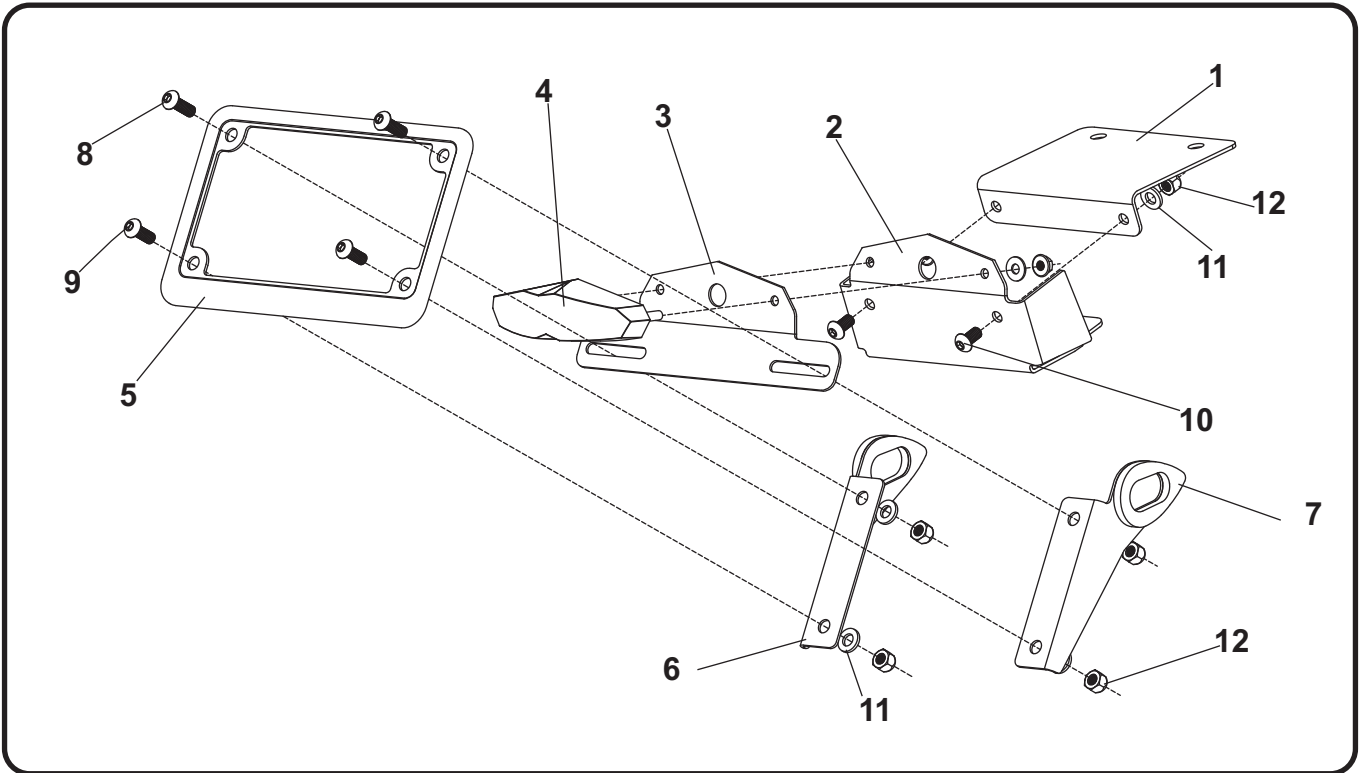


THIS PRODUCT IS NOT DOT APPROVED.

Yoshimura R&D of America, Inc. is not liable or responsible for any resulting event caused by the installation of this product. Check with local laws and regulations for compliance prior to installation and use. This product is not intended for use on public highways.



Assembly Diagram



No.	Item	Description	Qty.
1	12350-FEBKT-A	Fender Eliminator Bracket	1
2	12350-FEBKT-B	Fender Eliminator Light Bracket	1
3	12350-FEBKT-C	Fender Eliminator License Plate Bracket	1
4	HB025024	Combination Light	1
5	070BG-LPF	License Plate Frame	1
6	12350-TSB-L	Left Turn Signal Bracket	1
7	12350-TSB-R	Right Turn Signal Bracket	1
8	M6X18BHS	6mm x 18mm Button Head Screw	2
9	M6X16BHS	6mm x 16mm Button Head Screw	2
10	M6X12BHS	6mm x 12mm Button Head Screw	2
11	6MMWASHER	6mm Washer	6
12	6MMLN	6mm Nylon Lock Nut	6
**	BN-SSS-22-18	Solder Shrink Connectors	3
**	17100	Yoshimura Sticker Sheet	1
Optional Parts			
	072BGLTSFK	Yoshimura LED Front Turn Signal Kit	
	072BGLTSR	Yoshimura LED Rear Turn Signal Kit w/ Relay	
	070BGUNVTBKT	Universal Turn Signal Bracket Kit	

** Not shown on diagram.

*** The Yoshimura Universal Turn Signal Bracket Kit is to be used with aftermarket stud-mounted turn signals and is sold separately.

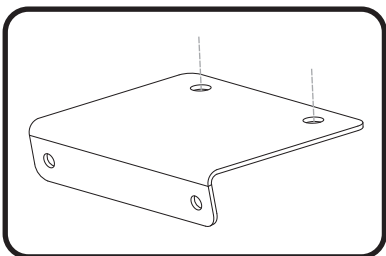
Removal

1. Remove rider seat.
2. Remove the two hook bolts securing upper rear fender. Carefully spread the left and right side covers out of the rear fender grommets and remove the rear upper fender.
3. Locate and disconnect license plate light, brake light, and turn signal connectors.
4. While securely supporting the stock fender assembly, remove the four bolts securing the fender assembly to the subframe. Carefully remove the stock fender assembly making sure not to damage connectors in the process.
5. Disassemble and remove left and right turn signals from the stock fender assembly.
6. Cut the stock tail/brake light connector from the stock fender assembly. Cut as close as possible from the bulb socket.

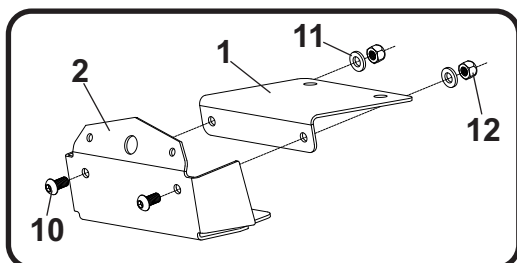
Note: The 2-wire license plate light connector will not be used. Mask off connector using electrical tape to seal.

Installation

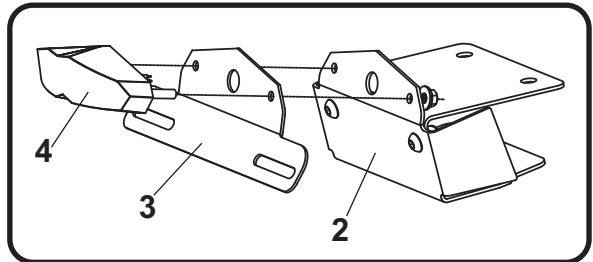
1. Install (No. 1) *12350-FEBKT-A*, fender eliminator bracket using the stock fender mounting bolts and secure to top of subframe.



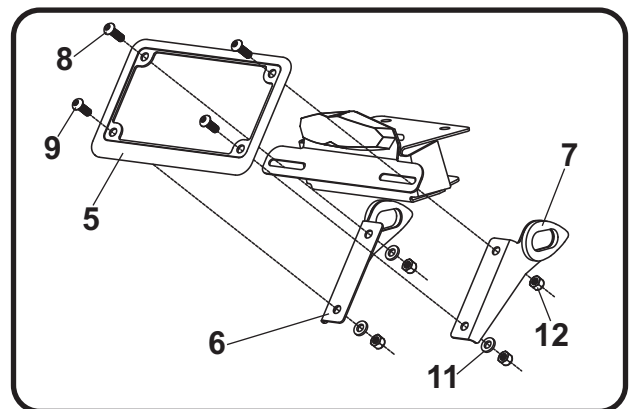
2. Install (No. 2) *12350-FEBKT-B*, light bracket to (No. 1) *12350-FEBKT-A*, fender eliminator bracket using (No. 10,11,12) 6mm bolt, washer, and lock nut.



3. Install and secure (No. 4) *HB025024*, combination light to (No. 3) *12350-FEBKT-C*, license plate bracket and (No. 2) *12350-FEBKT-B*, light bracket.



4. Install stock turn signals onto (No. 6,7) *12350-TSB-L/R*, left and right turn signal brackets using the stock hardware.
5. Assemble and install (No. 5) *070BG-LPF*, license plate frame and (No. 6,7) *12350-TSB-L/R*, turn signal brackets using (No. 8,9) 6mm screws and (No. 11,12) 6mm washers and lock nuts as shown.



6. Using the *BN-SSS-22-18*, solder shrink connectors provided in the kit, connect the Yoshimura combination light wires to the stock tail/brake light wires as follows:
 Yellow Wire -to- Black (Positive)
 Black Wire -to- Green (Ground)
 Red Wire -to- Green/Yellow (Brake Switch)

- a) Strip the stock fender light wire ends 1/4" - 1/2" and insert into *BN-SSS-22-18*, solder connectors provided in the kit.
- b) Center the spliced wire ends in the middle and using a heatgun or lighter, apply heat evenly on the outer edges of the connector to shrink and hold wires in place.
- c) Making sure that the stripped ends are centered, heat the center of the connector evenly until the solder begins to liquify.
- d) Allow to cool completely and tug both ends of the wires to verify that connection is secured.

Scan for link to solder shrink connector instruction video.



7. Route combination light and turn signal wires to stock location. Re-connect brake light and turn signal connectors.
8. Re-install upper rear fender using the reverse steps of removal.
9. Re-install rider seat.
10. Check for proper function of license plate light and turn signals and that all brackets and components are secure prior to riding.