



YOSHIMURA

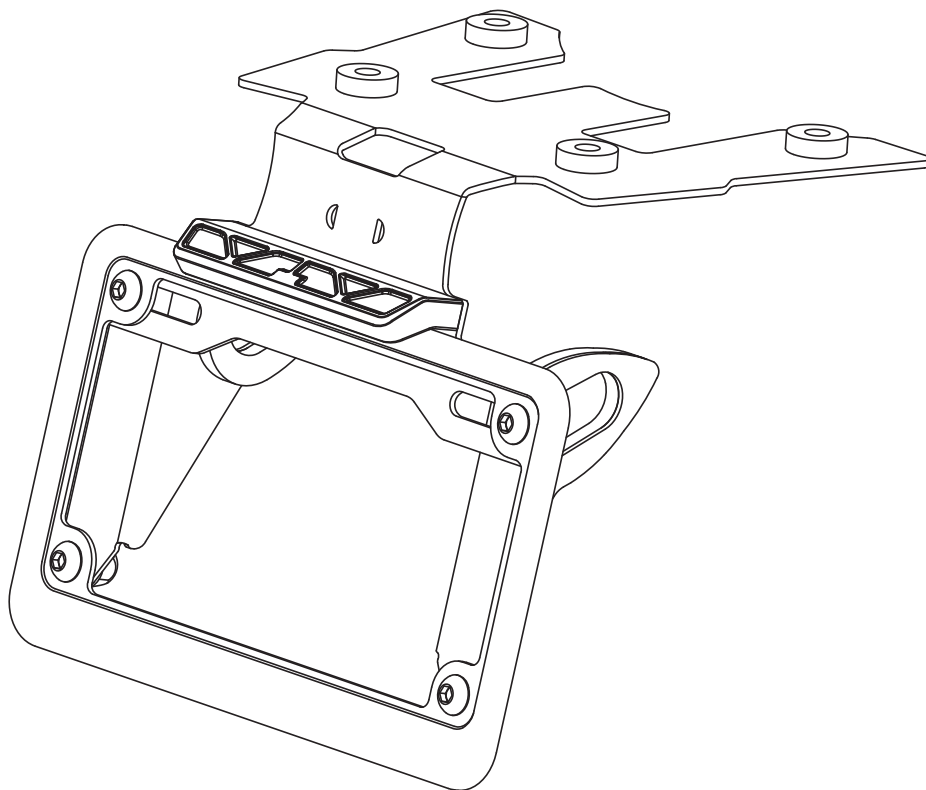
RESEARCH&DEVELOPMENT OF AMERICA, INC.

5420 DANIELS STREET STE A, CHINO CA., 91710 · (800) 634-9166 · (909) 628-4722 · FAX (909) 591-2198

www.yoshimura-rd.com

FENDER ELIMINATOR KIT

070BG124010
Honda Africa Twin

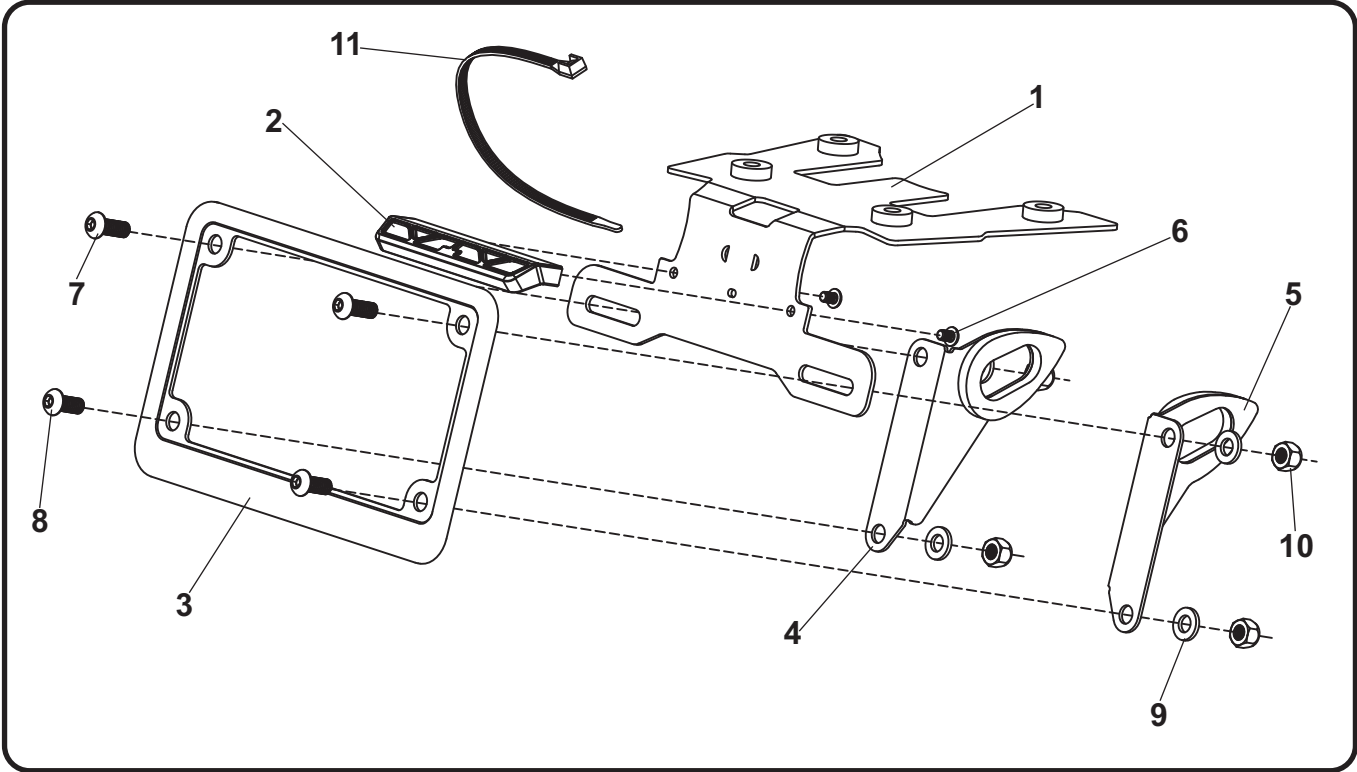


THIS PRODUCT IS NOT DOT APPROVED.

Yoshimura R&D of America, Inc. is not liable or responsible for any resulting event caused by the installation of this product. Check with local laws and regulations for compliance prior to installation and use. This product is not intended for use on public highways.



Assembly Diagram



No.	Item	Description	Qty.
1	12401-FEBKT	Fender Eliminator Bracket	1
2	070BG-LH-K1	LED License Plate Light	1
3	070BG-LPF	License Plate Frame	1
4	12200-TSB-L	Left Turn Signal Bracket	1
5	12200-TSB-R	Right Turn Signal Bracket	1
6	M4X6BHS	4mm x 6mm Button Head Screw	2
7	M6X16BHS	6mm x 16mm Button Head Screw	2
8	M6X14BHS	6mm x 14mm Button Head Screw	2
9	6MMWASHER	6mm Washer	4
10	6MMLN	6mm Nylon Lock Nut	4
11	ZT-200	Cable Tie	2
**	BN-SSS-22-18	Solder Shrink Connectors	2
**	17100	Yoshimura Sticker Sheet	1
Optional Parts			
	072BGLTSFK	Yoshimura LED Front Turn Signal Kit	
	070BGUNVTBKT	Universal Turn Signal Bracket Kit	
	073BG-HON	Plug-n-Play Turn Signal Adapter	

** Not shown on diagram.

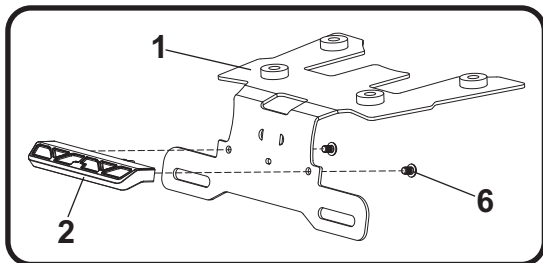
*** The Yoshimura Universal Turn Signal Bracket Kit is to be used with aftermarket stud-mounted turn signals and is sold separately.

Removal

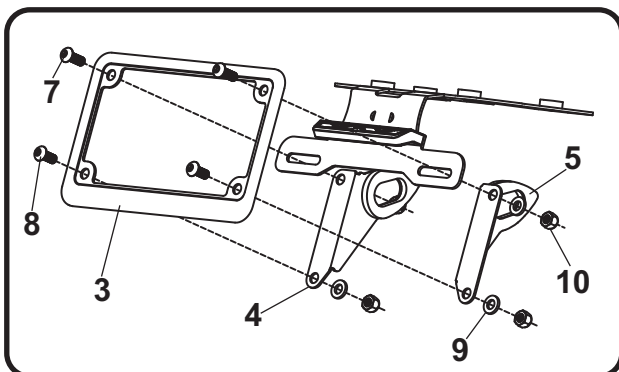
1. Remove passenger seat.
2. Locate and disconnect license plate light and turn signal connectors.
3. While securely supporting the stock fender assembly, remove the four bolts securing the fender assembly to the subframe. Carefully remove the stock fender assembly making sure not to damage connectors in the process.
4. Disassemble and remove left and right turn signals from the stock fender assembly.
5. Cut the stock license plate light connector from the stock fender assembly. Be sure to cut at least a 6" section of wire from the connector.

Installation

1. Install (No. 2) *070BG-LH-K1*, license plate light to (No. 1) *12401-FEBKT*, fender eliminator bracket using (No. 6) *M4X6BHS*, 4mm screws.



2. Install (No. 1) *12401-FEBKT*, fender eliminator bracket using the four stock fender bolts and washers.
3. Install stock turn signals onto (No. 4,5) *12200-TSB-L/R*, left and right turn signal brackets.
4. Assemble and install (No. 3) *070BG-LPF*, license plate frame and (No. 4,5) *12200-TSB-L/R*, turn signal brackets using (No. 7,8) 6mm screws and (No. 9,10) 6mm washers and lock nuts as shown.

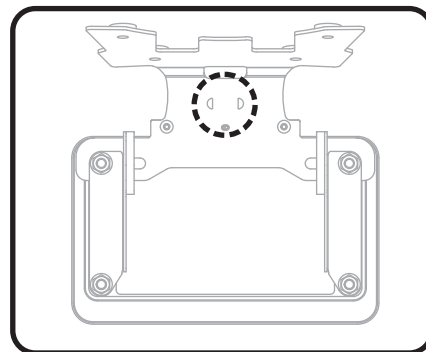


5. Using the *BN-SSS-22-18*, solder shrink connectors provided in the kit, connect the Yoshimura license plate light wires to the stock license plate light wires as follows:
Brown Wire -to- Red (Positive)
Green Wire -to- Black (Ground)
 - a) Strip the stock fender light wire ends 1/4" - 1/2" and insert into *BN-SSS-22-18*, solder connectors provided in the kit.
 - b) Center the spliced wire ends in the middle and using a heatgun or lighter, apply heat evenly on the outer edges of the connector to shrink and hold wires in place.
 - c) Making sure that the stripped ends are centered, heat the center of the connector evenly until the solder begins to liquify.
 - d) Allow to cool completely and tug both ends of the wires to verify that connection is secured.

Scan for link to solder shrink connector instruction video.



6. Route license plate light and turn signal wires through hole in fender bracket and to stock location. Re-connect license plate light and turn signal connectors.
7. Using (No. 11) *ZT-200*, cable tie supplied in the kit, secure license plate light and turn signal wires to cable tie holes in fender bracket.



8. Re-install passenger seat.
9. Check for proper function of license plate light and turn signals and that all brackets and components are secure prior to riding.