



# YOSHIMURA

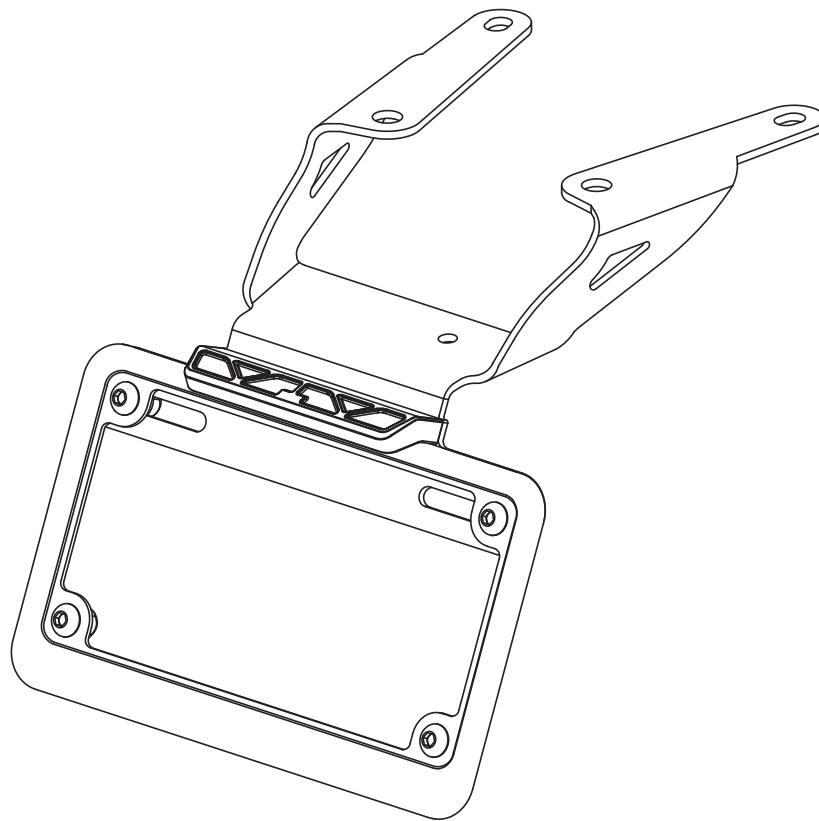
RESEARCH&DEVELOPMENT OF AMERICA, INC.

5420 DANIELS STREET STE A, CHINO CA., 91710 · (800) 634-9166 · (909) 628-4722 · FAX (909) 591-2198

[www.yoshimura-rd.com](http://www.yoshimura-rd.com)

## **FENDER ELIMINATOR KIT**

**070BG124500**  
**Honda CRF450L**

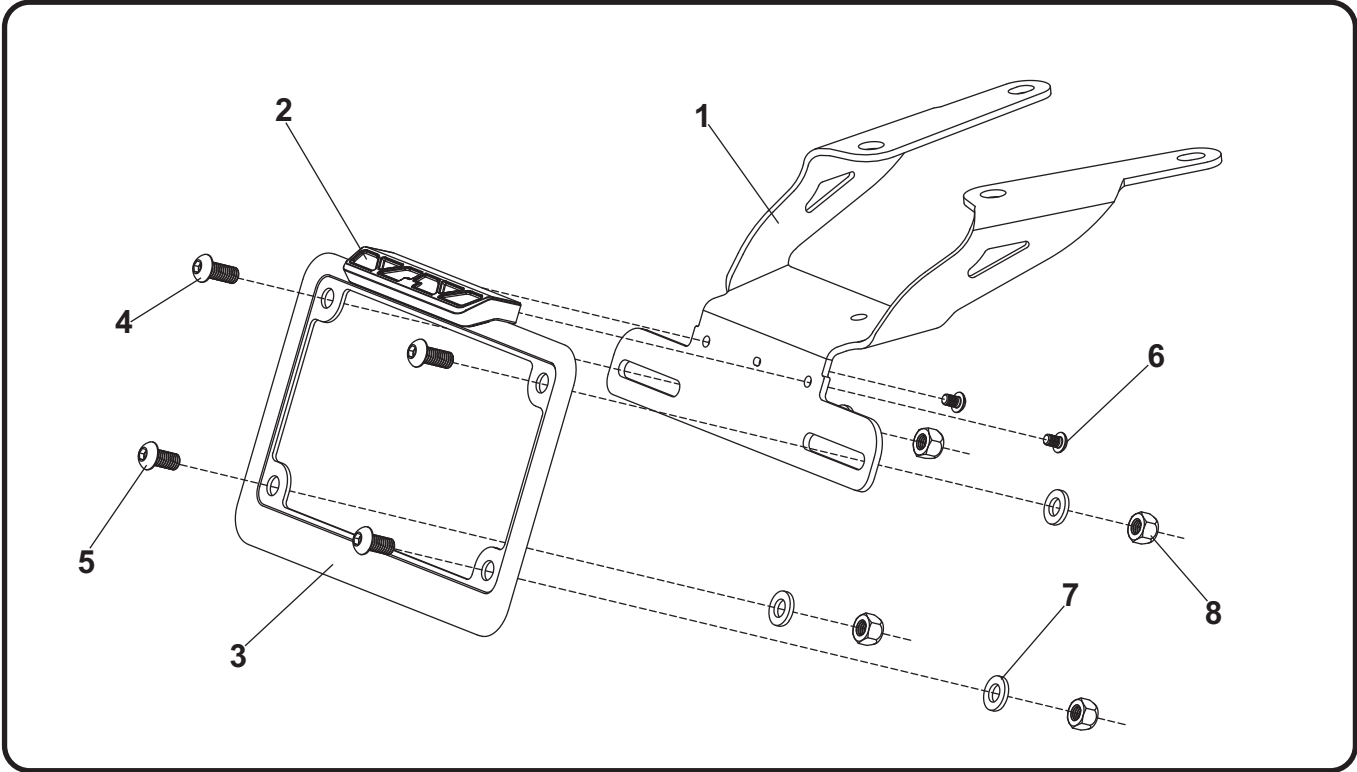


**THIS PRODUCT IS NOT DOT APPROVED.**

Yoshimura R&D of America, Inc. is not liable or responsible for any resulting event caused by the installation of this product. Check with local laws and regulations for compliance prior to installation and use. This product is not intended for use on public highways.



## Assembly Diagram



No.	Item	Description	Qty.
1	12450-FEBKT	Fender Eliminator Bracket	1
2	070BG-LH-K1	Fender Eliminator LED Light	1
3	070BG-LPF	License Plate Frame	1
4	M6X14BHS	6mm x 14mm Button Head Screw	2
5	M6X12BHS	6mm x 12mm Button Head Screw	2
6	M4X6BHS	4mm x 6mm Button Head Screw	2
7	6MMWASHER	6mm Washer	4
8	6MMLN	6mm Nylon Lock Nut	4
**	BN-SSS-22-18	Solder Shrink Connectors	2
**	17100	Yoshimura Sticker Sheet	1

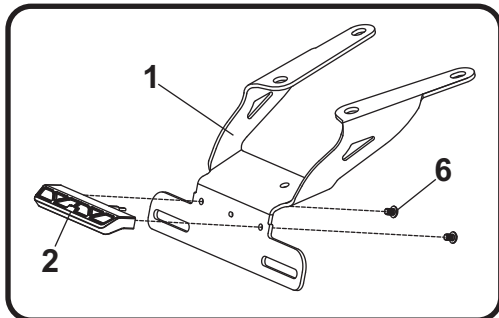
\*\* Not shown on diagram.

## Removal

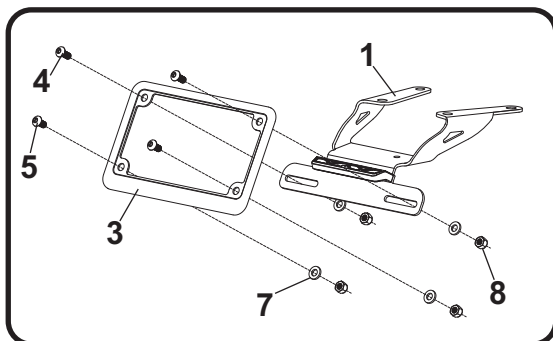
1. Remove rider seat.
2. Remove the upper rear fender.
3. Locate and disconnect license plate light connector.
4. While securely supporting the stock number plate bracket, remove the four bolts securing the number plate bracket to the subframe. Carefully remove number plate bracket making sure not to damage connector in the process.
5. Cut the stock license plate light wires from the number plate bracket.

## Installation

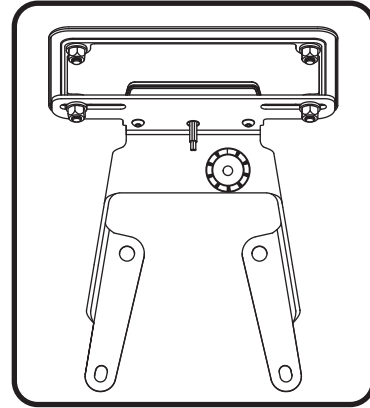
1. Install (No. 2) *070BG-LH-K1*, fender eliminator light onto (No. 1) *12450-FEBKT*, fender eliminator bracket using (No. 6) *M4X6BHS*, 4mm screws.



2. Assemble and install (No. 3) *070BG-LPF*, license plate frame to (No. 1) *12450-FEBKT*, fender eliminator bracket using (No. 4,5) 6mm screws and (No. 7,8) 6mm washers and lock nuts as shown.



3. Route license plate light wire through hole in (No. 1) *12450-FEBKT*, fender eliminator bracket.



4. Using the *BN-SSS-22-18*, solder shrink connectors provided in the kit, connect the Yoshimura license plate light wires to the stock license plate light wires as follows:

Black Wire -to- Green (-)  
Red Wire -to- Brown (+)

- a) Strip the stock fender light wire ends 1/4" - 1/2" and insert into *BN-SSS-22-18*, solder connectors provided in the kit.
- b) Center the spliced wire ends in the middle and using a heatgun or lighter, apply heat evenly on the outer edges of the connector to shrink and hold wires in place.
- c) Making sure that the stripped ends are centered, heat the center of the connector evenly until the solder begins to liquify.
- d) Allow to cool completely and tug both ends of the wires to verify that connection is secured.

Scan for link to solder shrink connector instruction video.



5. Install assembled fender eliminator bracket using the four stock bolts. Torque to factory specifications.
6. Route license plate light wires through undertail and re-connect connectors.
7. Re-install upper rear fender using reverse steps of removal.

8. Re-install rider seat.
9. Check for proper function of license plate light and that all brackets and components are secure prior to riding.