




# Fender Eliminator Kit

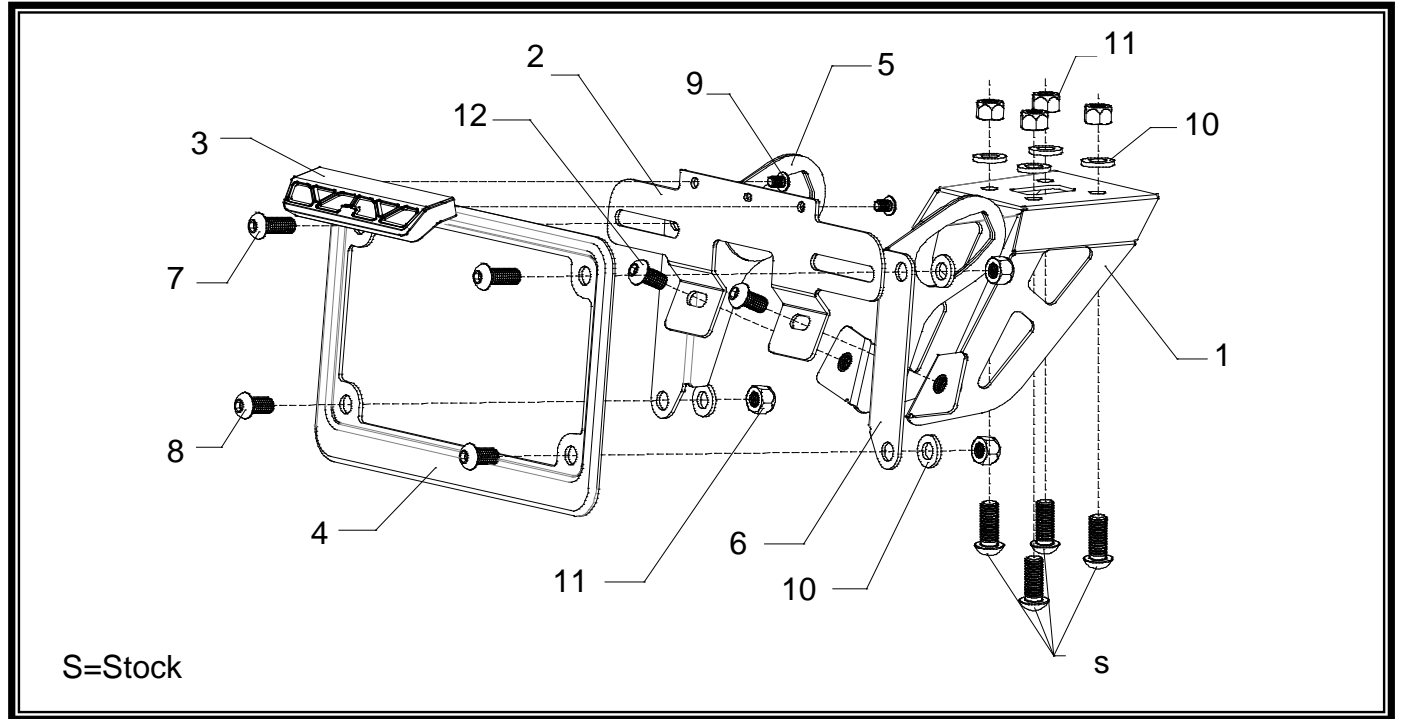
APPLICATION

|          |               |
|----------|---------------|
| MAKE     | MODEL         |
| Kawasaki | ZX10R<br>ZX6R |

PRODUCT

|             |                       |
|-------------|-----------------------|
| 070BG141703 | Fender Eliminator Kit |
|-------------|-----------------------|

 This product is not DOT approved. Yoshimura R&D of America, Inc. is not liable or responsible for any resulting event caused by the installation of this product. Check with local laws and regulations for compliance prior to installation and use. This product is not intended for use on public highways.



| No.                               | Part #        | Description                           | Qty |
|-----------------------------------|---------------|---------------------------------------|-----|
| 1                                 | 14170-FEB     | Yoshimura Fender Eliminator Bracket   | 1   |
| 2                                 | 12200-FEBKT   | Yoshimura License Plate Bracket       | 1   |
| 3                                 | 070BG-LH-K1   | Yoshimura LED Fender Eliminator Light | 1   |
| 4                                 | 070BG-LPF     | Yoshimura License Plate Frame         | 1   |
| 5                                 | 14650-TSL-BKT | Left Turn Signal Bracket              | 1   |
| 6                                 | 14650-TSR-BKT | Right Turn Signal Bracket             | 1   |
| 7                                 | M6X16BHS      | 6mm x 16mm Button Head Screw          | 2   |
| 8                                 | M6X14BHS      | 6mm x 14mm Button Head Screw          | 2   |
| 9                                 | M4X6BHS       | 4mm x 6mm Button Head Screw           | 2   |
| 10                                | 6MMWASHER     | 6mm Flat Washer                       | 8   |
| 11                                | 6MMLN         | 6mm Nylon Lock Nut                    | 8   |
| 12                                | M6X12BHS      | 6mm x 12mm Button Head Screw          | 2   |
| **                                | ZT-200        | Zip Ties                              | 3   |
| **                                | BN-SSS-22-18  | Butt Connectors                       | 2   |
| **                                | 17029         | Yoshimura Sticker Sheet               | 1   |
| <i>Optional Parts (not incl.)</i> |               |                                       |     |
| ***                               | 070BUNVTBKT   | Universal Turn Signal Bracket Kit     |     |

**-TOOLS REQUIRED-**

*Metric Socket Set • Combination Wrench Set • Metric Allen Wrench Set*

**-REMOVAL-**

- 1. Remove tail cowl or passenger seat. Disconnect license plate light and turn signal connectors.**
- 2. Remove stock fender and turn signals by removing the (4) bolts securing stock fender assembly to subframe.**
- 3. Remove stock turn signals from stock fender assembly by removing the screw and plate securing the turn signals to fender assembly.**
- 4. Cut the stock license plate light connector from the stock fender harness. BE SURE TO CUT AT LEAST A 6" SECTION OF WIRE FROM THE CONNECTOR.**

**-INSTALLATION-**

- 1. Install Yoshimura fender eliminator bracket using the (4) stock bolts in conjunction with the washers and lock nuts supplied in the kit. See diagram for proper orientation and order of hardware.**
- 2. Install Yoshimura LED fender eliminator light to license plate bracket using the (2) 4mm screws provided in the kit. Using the connectors in the kit, connect the Yoshimura Fender Eliminator wires to the stock license plate light connector as follows: Red wire goes to Red wire; Black wire goes to Black w/ Yellow stripe.**
  - A) Strip the stock fender light wires ends ¼" - ½" and insert into BN-SSS-22-18, butt connectors provided in the kit.**
  - B) Center the spliced wire ends in the middle and using a heat gun or lighter, apply heat evenly on the outer edges of the butt connector to shrink and hold wires in place.**
  - C) Making sure that the stripped ends are centered, heat the center of the butt connector evenly until the solder begins to liquify.**
  - D) Allow to cool completely and tug both ends of the wires to verify that connection is secured.**

**Scan for link to butt connector instruction video.**



- 3. Install stock turn signals onto Yoshimura turn signal brackets and secure using stock turn signal plate and screw.**
- 4. Install Yoshimura license plate bracket onto Yoshimura fender eliminator bracket. See diagram for proper orientation and order of hardware.**
- 5. Install Yoshimura license plate frame and turn signal brackets according to the diagram.**

- 6. Route wiring through hole in bracket, then through tail section to stock location. Re-connect license plate light connector and turn signal connectors to stock harness. Use provided cable ties to secure license plate light wires in the tail section.**
- 7. Re-install rear seat.**
- 8. Check for function of license plate light and turn signals and that all brackets and components are secure prior to riding.**