



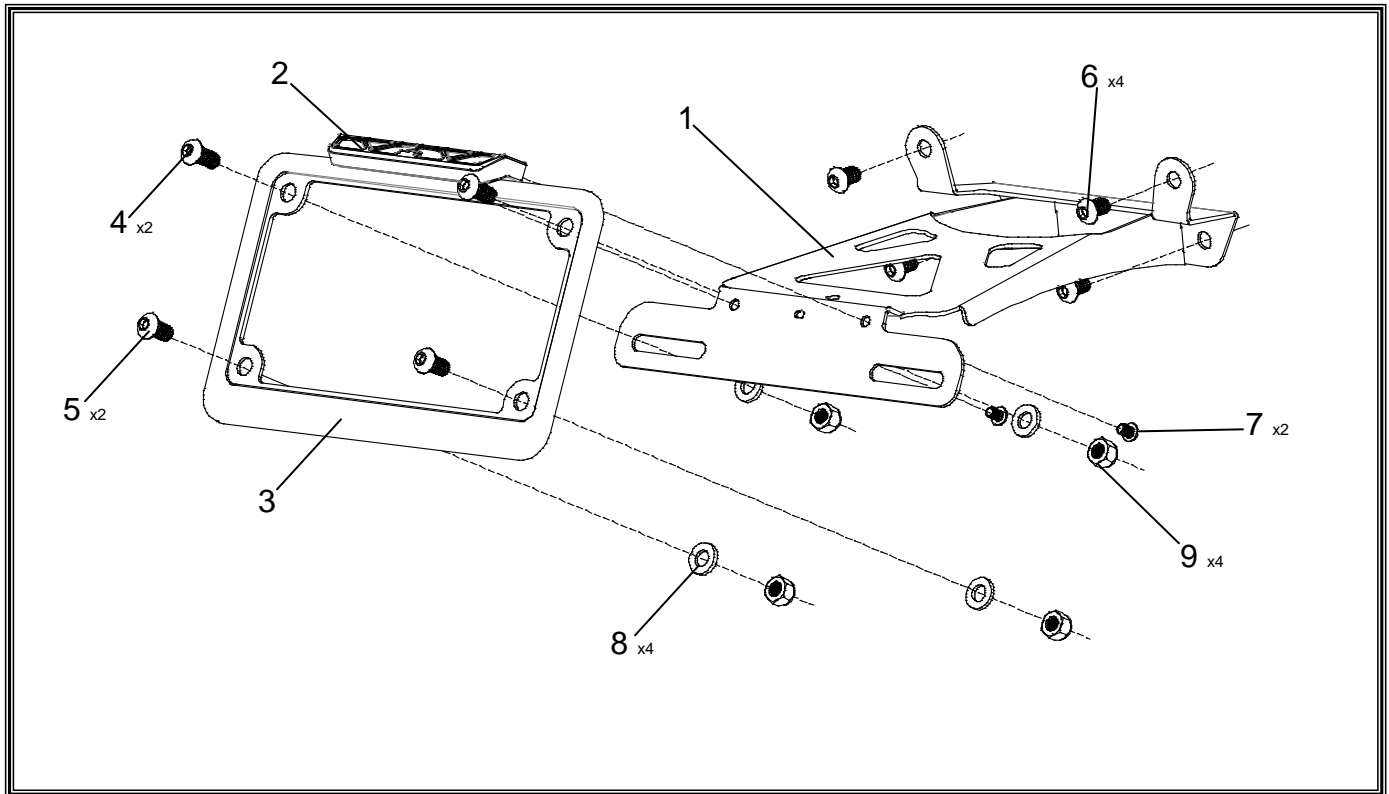
Fender Eliminator Kit

APPLICATION

YEAR	MODEL
2005-2012	BMW F800R
PRODUCT	
070BG158002	Fender Eliminator Kit



This product is not DOT approved. Yoshimura R&D of America, Inc. is not liable or responsible for any resulting event caused by the installation of this product. Check with local laws and regulations for compliance prior to installation and use. This product is not intended for use on public highways.



No.	Part #	Description	Qty
1	15800-FEBKT	Yoshimura Fender Eliminator Bracket	1
2	070BG-LH-K1	Yoshimura LED Fender Eliminator	1
3	070BG-LPF	Yoshimura Aluminum License Plate Frame	1
4	M6X16BHS	6mm x 16mm Button Head Screw	2
5	M6X14BHS	6mm x 14mm Button Head Screw	2
6	M6X10BHS	6mm x 10mm Button Head Screw	4
7	M4X6BHS	4mm x 6mm Button Head Screw	2
8	6MMWASHER	6mm Flat Washer	4
9	6MMLN	6mm Lock Nut	4
**	ZT-300	Zip Ties	3
**	BN-SSS-22-18	Butt Connectors	2
**	17029	Yoshimura Sticker Sheet	1

-TOOLS REQUIRED-

Metric Socket Set • Combination Wrench Set • Metric Allen Wrench Set • Torx Bit Set

-REMOVAL-

1. **Remove rear cowl or Passenger seat.**
2. **Remove the (4) bolts securing fender assembly in place.**
3. **Carefully pull out license plate light from fender assembly.**
Note: The stock license plate light wire will need to be cut to wire Yoshimura Fender Eliminator Kit license plate light.

-INSTALLATION-

1. **Install Yoshimura LED license plate light onto fender eliminator using the (2) provided 4mm screws.**
2. **Install Yoshimura Fender Eliminator Bracket to subframe using the (4) provided M6X10 bolts.**
3. **Install License plate frame according to the parts diagram.**
4. **Cut off the stock license plate light wires 75mm away from the light.**
5. **Route license plate light and turn signal harness through opening in undertail cowl.**
6. **Using the supplied butt connectors, connect the license plate illumination light wires to the plate light and turn signal harness as follows:**

Yoshimura FE Wire-----Stock Sub-harness

Red Wire-----Yellow Wire

Black Wire-----Brown Wire

(Note: Use of soldering and heat shrink tubing is recommended)

- a) **Strip the stock fender light wire ends ¼” – ½” and insert into BN-SSS-22-18, butt connectors provided in the kit.**
- b) **Center the spliced wire ends in the middle and using a heatgun or lighter, apply heat evenly on the outer edges of the butt connector to shrink and hold wires in place.**
- c) **Making sure that the stripped ends are centered, heat the center of the butt connector evenly until the solder begins to liquefy.**
- d) **Allow to cool completely and tug both ends of the wires to verify that connection is secured.**

Scan for link to butt connector instruction video.



7. **To prevent loose wires and/or connections, route and secure the wires inside the tail section using the provided zip ties from the kit.**
8. **Re-install cowl cover or rear seat.**
9. **Check for function of license plate light and that all brackets and components are secure prior to riding.**