



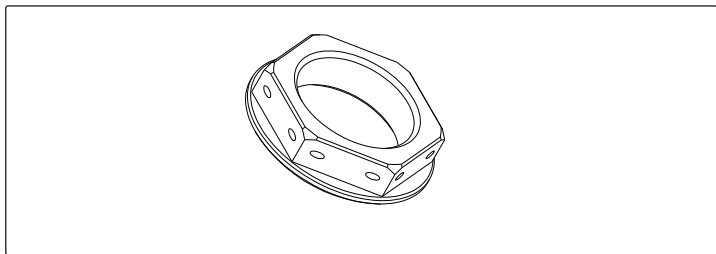
YOSHIMURA

RESEARCH&DEVELOPMENT OF AMERICA, INC.

5420 DANIELS STREET STE A, CHINO CALIF. 91710 · (800)634-9166 · (909)628-4722 · FACSIMILE (909)591-2198

www.yoshimura-rd.com

090HA122000 STEERING STEM NUT KIT



Instructions:

1. Remove stock steering head nut.
2. Install Yoshimura steering head nut. Torque to 101 lb-ft (137 Nm).

If safety wire is required, loop safety wire through the holed drilled in the nut and secure to stationary location on upper triple clamp.

NOTE: Installation to be performed by qualified technician only.

| NO. | DESCRIPTION | QTY | PART # |
|-----|-------------|-----|--------------|
| 1 | Stem Nut | 1 | 090HA122000F |



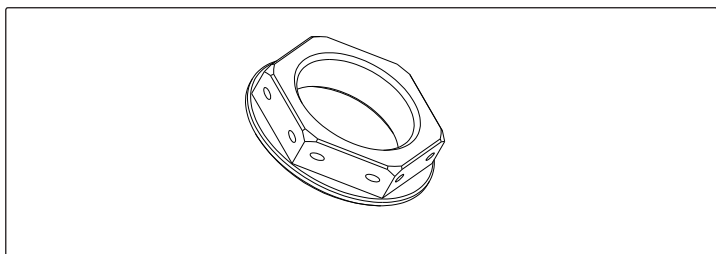
YOSHIMURA

RESEARCH&DEVELOPMENT OF AMERICA, INC.

5420 DANIELS STREET STE A, CHINO CALIF. 91710 · (800)634-9166 · (909)628-4722 · FACSIMILE (909)591-2198

www.yoshimura-rd.com

090HA122000 STEERING STEM NUT KIT



Instructions:

1. Remove stock steering head nut.
2. Install Yoshimura steering head nut. Torque to 101 lb-ft (137 Nm).

If safety wire is required, loop safety wire through the holed drilled in the nut and secure to stationary location on upper triple clamp.

NOTE: Installation to be performed by qualified technician only.

| NO. | DESCRIPTION | QTY | PART # |
|-----|-------------|-----|--------------|
| 1 | Stem Nut | 1 | 090HA122000F |