



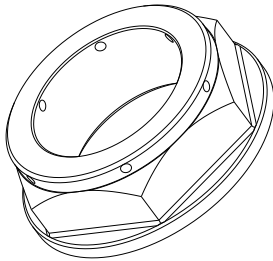
YOSHIMURA

RESEARCH & DEVELOPMENT OF AMERICA, INC.

5420 DANIELS STREET STE A, CHINO CALIF. 91786 · (800)634-9166 · (909)628-4722 · FACSIMILE (909)591-2198

www.yoshimura-rd.com

STEERING STEM NUT 090HA219200



Part List:

DESCRIPTION	QTY	PART #
RMZ450 2005 DRILLED STEM NUT	1	090HA219200F
Yoshimura *USA* Sticker	2	17020C

Note: Read through all instructions before beginning installation.

Tools Needed:

10 mm socket Torque wrench
Ratchet 32 mm socket

Installation Steps:

- 1 Remove handlebar mount and handlebars.
(See Fig. 1)
- 2 Remove stock steering stem nut. (See Fig. 2)
- 3 Install the new steering stem nut. (See Fig. 3)
Torque nut to 10 kg-m (72.5 lb-ft).
(Note: Use the stock washer)
- 4 Reinstall handlebars and handlebar mount.

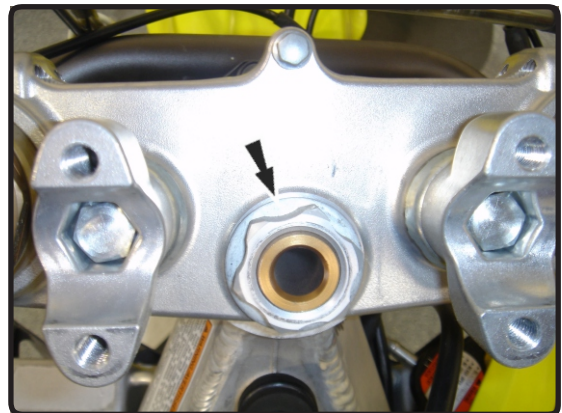


Fig. 2

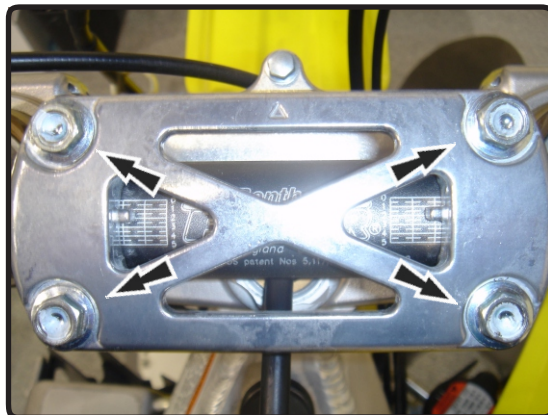


Fig. 1

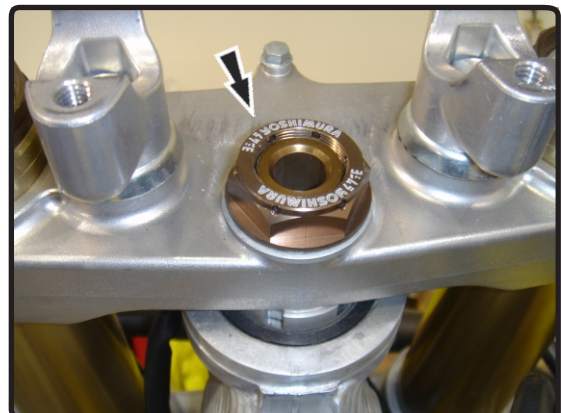


Fig. 3