



YOSHIMURA

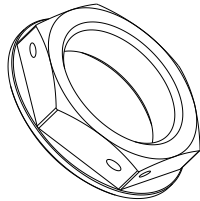
RESEARCH&DEVELOPMENT OF AMERICA, INC.

5420 DANIELS STREET STE A, CHINO CALIF. 91710 · (800)634-9166 · (909)628-4722 · FACSIMILE (909)591-2198

www.yoshimura-rd.com

090HA242800

STEERING STEM NUT



Instructions:

1. Remove stock steering head bolt.
2. Install Yoshimura steering head bolt. Torque to 72 lb-ft (97.5 N-m).

If safety wire is required, loop safety wire through the holes drilled in the nut and secure to stationary location on upper triple clamp.

Note: Installation to be performed by qualified technician only.

| NO. | DESCRIPTION | QTY | PART # |
|-----|-------------|-----|--------------|
| 1 | Stem Nut | 1 | 090HA242800F |



YOSHIMURA

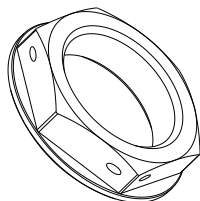
RESEARCH&DEVELOPMENT OF AMERICA, INC.

5420 DANIELS STREET STE A, CHINO CALIF. 91710 · (800)634-9166 · (909)628-4722 · FACSIMILE (909)591-2198

www.yoshimura-rd.com

090HA242800

STEERING STEM NUT



Instructions:

1. Remove stock steering head bolt.
2. Install Yoshimura steering head bolt. Torque to 72 lb-ft (97.5 N-m).

If safety wire is required, loop safety wire through the holes drilled in the nut and secure to stationary location on upper triple clamp.

Note: Installation to be performed by qualified technician only.

| NO. | DESCRIPTION | QTY | PART # |
|-----|-------------|-----|--------------|
| 1 | Stem Nut | 1 | 090HA242800F |