



# YOSHIMURA

RESEARCH&DEVELOPMENT OF AMERICA, INC.

5420 DANIELS STREET STE A, CHINO CALIF. 91710 · (800)634-9166 · (909)628-4722 · FACSIMILE (909)591-2198

[www.yoshimura-rd.com](http://www.yoshimura-rd.com)

**090RD225700**

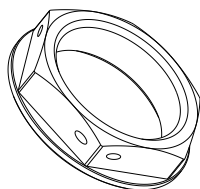
STEERING STEM NUT

2002-2014 Honda CRF 450R

2004-2014 Honda CRF 250R

2005-2014 Honda CRF 450X

2004-2014 Honda CRF 250X



### Instructions:

1. Remove stock steering head bolt.
2. Install Yoshimura steering head bolt. Torque to 80 lb-ft (108 N-m).

If safety wire is required, loop safety wire through the holes drilled in the nut and secure to stationary location on upper triple clamp.

Note: Installation to be performed by qualified technician only.

NO.	DESCRIPTION	QTY	PART #
1	Stem Nut	1	090RD225700F



# YOSHIMURA

RESEARCH&DEVELOPMENT OF AMERICA, INC.

5420 DANIELS STREET STE A, CHINO CALIF. 91710 · (800)634-9166 · (909)628-4722 · FACSIMILE (909)591-2198

[www.yoshimura-rd.com](http://www.yoshimura-rd.com)

**090RD225700**

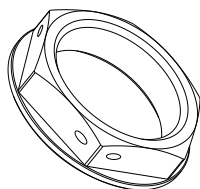
STEERING STEM NUT

2002-2014 Honda CRF 450R

2004-2014 Honda CRF 250R

2005-2014 Honda CRF 450X

2004-2014 Honda CRF 250X



### Instructions:

1. Remove stock steering head bolt.
2. Install Yoshimura steering head bolt. Torque to 80 lb-ft (108 N-m).

If safety wire is required, loop safety wire through the holes drilled in the nut and secure to stationary location on upper triple clamp.

Note: Installation to be performed by qualified technician only.

NO.	DESCRIPTION	QTY	PART #
1	Stem Nut	1	090RD225700F