



YOSHIMURA

RESEARCH&DEVELOPMENT OF AMERICA, INC.

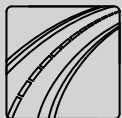
5420 DANIELS STREET STE A, CHINO CA., 91710 · (800) 634-9166 · (909) 628-4722 · FAX (909) 591-2198

www.yoshimura-rd.com

Street Series

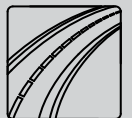
Qualified Manufacturer Declared "Replacement Part"

2020
Suzuki Katana
1150BP520 (SS/CF)
Alpha Taper Slip-On



All Street Series systems are:

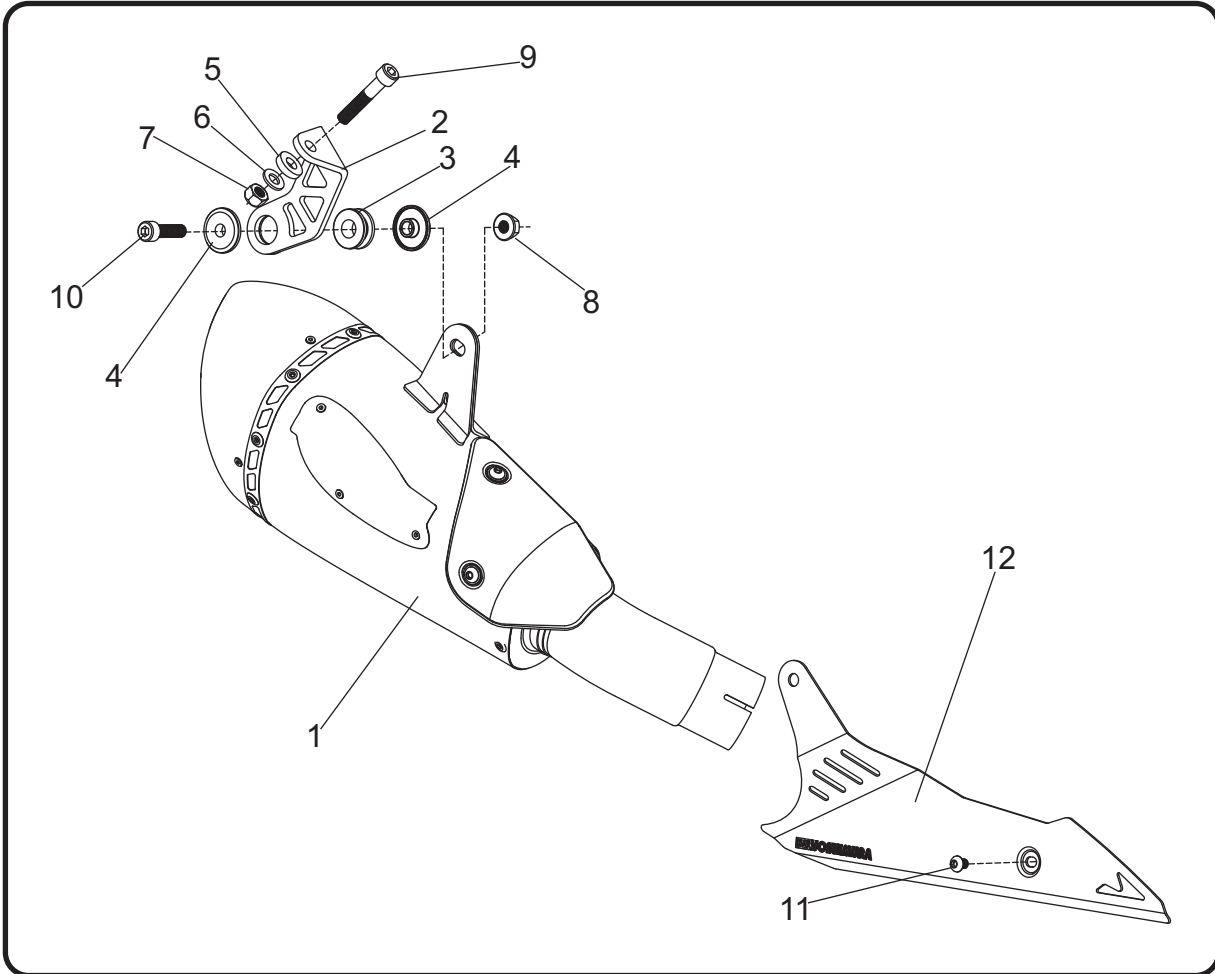
- Slip-on/Bolt-on applications that do not require tampering with the vehicle's emissions control system.
- CARB/EPA tail-pipe emissions compliant.
- Marked with appropriate EPA noise labels.
- Not tested for EPA new vehicle noise compliance.



✘ You must know how to remove and replace your stock exhaust in order to install this product otherwise have it installed by a professional mechanic. Keep all stock parts from your existing system as some components may be necessary to install your new Yoshimura exhaust depending on the application. Read through all instructions before beginning installation. Exhaust system can be extremely hot. Let motorcycle cool down before beginning installation. Always wear hand and eye protection and take precautionary measures to avoid injury. ✘

NOTE: IN THE STATE OF CALIFORNIA, IT IS ILLEGAL TO MODIFY THE EMISSION CONTROL SYSTEM, WHICH INCLUDES THE CARBURETORS OF ANY VEHICLE.

Assembly Diagram



No.	Item	Description	Qty.
1	11500BP520-RMA	Yoshimura Muffler Assembly	1
2	11500-BRKT	Muffler Hanger Bracket	1
3	Z1024	Rubber Grommet	1
4	ALS-043	Aluminum Spacer	2
5	11500-SPCR	Muffler Bracket Spacer	1
6	8MMWASHER	8mm Washer	1
7	8MMLN	8mm Lock Nut	1
8	8MMNUT	8mm Flange Nut	1
9	M8X50	8mm x 50mm Socket Head Cap Screw	1
10	M8X30	8mm x 30mm Socket Head Cap Screw	1
11	RC116HSB-BK-P	6mm x 8mm Black Button Head Screw	1
12	11100-435-HS	Heatshield	1
**	17100	Sticker Sheet	1

** Not Shown on diagram.

CAUTION: Exhaust system can be extremely hot. Let motorcycle cool down before beginning installation. Always wear hand and eye protection and take precautionary measures to avoid injury.

WARNING: Always properly support vehicle with a stand and/or lift when servicing or performing any work. Unstable vehicles may present dangerous conditions and may cause property damage and/or personal injury.

NOTE: Read through all instructions before beginning installation.

Removal

1. Remove heatshield bolt and carefully remove the stock muffler/header heatshield.
2. Loosen the stock exhaust clamp between the header and muffler joint.
3. While securely supporting the stock muffler, remove the muffler mount bolt and carefully remove the stock muffler assembly.

Note¹: The stock exhaust gasket will be re-used with the Yoshimura system. Inspect and replace if necessary.

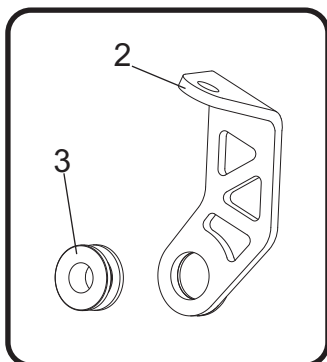
Note²: The stock exhaust clamp will be re-used with the Yoshimura system.

4. Remove right side passenger footpeg cotter pin, washer, o-ring, and footpeg pin.

Note: Make sure not to remove footpeg, spring, and detent ball assembly.

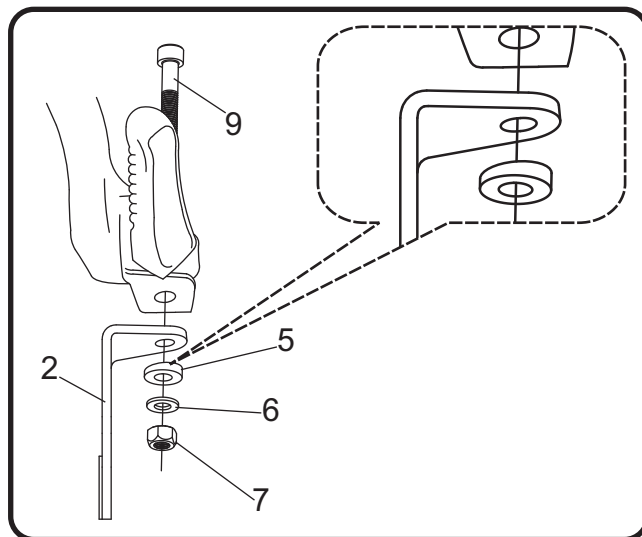
Installation

1. Install (No. 3) Z1024, rubber grommet into (No. 2) 11500-BRKT, muffler hanger bracket.

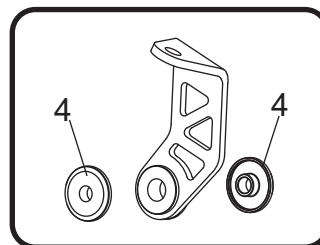


2. Install (No. 2) 11500-BRKT, muffler hanger bracket onto the bottom of the right passenger footpeg bracket as shown using (No. 9) M8X50, 8mm bolt, (No. 5) 11500-SPCR, muffler bracket spacer, (No. 6) 8MMWASHER, 8mm washer, and (No. 7) 8MMLN, 8mm lock nut. Do not torque bolt at this time.

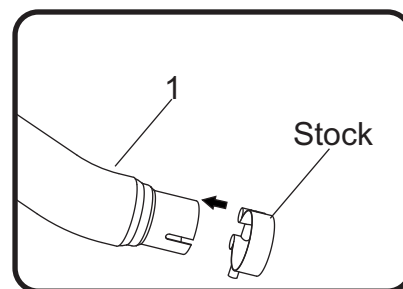
Note: Due to the securing bolt being installed at a slight angle, the muffler bracket spacer is angle cut to ensure the securing bolt is level when tightened. See diagram below for proper orientation and position of muffler bracket spacer.



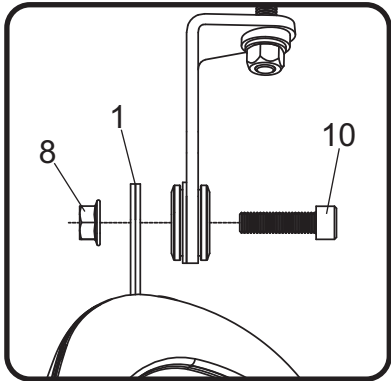
3. Install (No. 4) ALS-043, aluminum spacers into frontside and backside of Z1024, rubber grommet.



4. Install stock muffler exhaust gasket onto header outlet.
5. Slide stock exhaust clamp over (No. 1) 11500BP520-RMA, muffler inlet as shown. Do not torque clamp at this time.



6. Install (No. 1) *11500BP520-RMA*, muffler tailpipe over the stock header outlet. Align muffler bracket to the backside of muffler hanger bracket and secure using (No. 10) *M8X30*, 8mm bolt, and (No. 8) *8MMNUT*, 8mm flange nut as shown. Torque muffler bolt to 23 Nm (2.3 kg-m, 17 ft-lb).



7. Torque stock exhaust clamp to factory specification.
8. Torque muffler hanger bracket bolt to 23 Nm (2.3 kg-m, 17 ft-lb).
9. Using the stock muffler mount bolt, washer, and nut, install (No. 12) *11100-435-HS*, heatshield to the stock muffler mount. Align forward heatshield mount to stock header and secure using (No. 11) *RC116HSB-BK-P*, 6mm black button head screw.
10. Before starting vehicle, check for proper clearance between new exhaust system and rear suspension (i.e. tire, swingarm, brakes, rear shock, and etc.) If any problem is found, please carefully follow through the installation steps again. If problem still persists, please call Yoshimura Tech Department at (800) 634-9166 / in CA (909) 628-4722.
11. It is recommended that the muffler and tailpipe be wiped down with rubbing alcohol to remove oil and fingerprints. This will help prevent tarnishing of the finish after the exhaust is heated up.

Note: After starting motorcycle, it is normal for new exhaust system and muffler to emit smoke until oil residue burns off.

Works Finish Care & Maintenance

Before starting vehicle, clean pipe thoroughly using a soft cloth and rubbing alcohol to remove any oil and finger prints.

The color of the exhaust will change once the system has gone through a heat cycle of 15 minutes or more. Color will vary depending on lean/rich conditions.

Clean using a soft cloth and soap. Do not use abrasive materials as it will scratch the surface.

Surface reconditioning services are available to remove scratches and undesirable discoloration due to extreme heat. Contact Yoshimura Tech Department at (800) 634-9166 / in CA (909) 628-4722 for more information.