



RACE SERIES

Qualified Manufacturer Declared "Modified Part"

APPLICATION

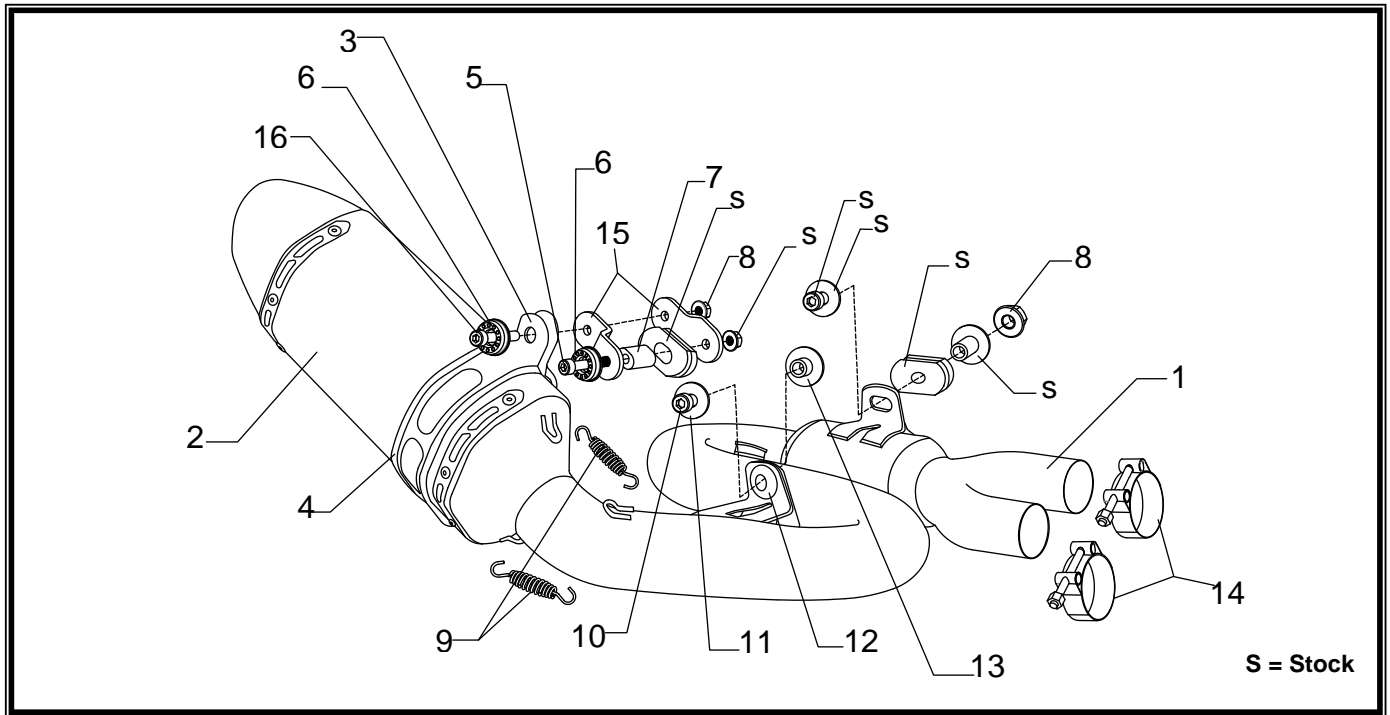
YEAR	MODEL
2011-2016	Honda CB1000R

PRODUCT

1210040220	R77 Stainless Steel 3/4 Exhaust System with Carbon Fiber Sleeve; Carbon Fiber Endcap
1210040520	R77 Stainless Steel 3/4 Exhaust System with Stainless Steel Sleeve; Carbon Fiber Endcap
1210043220	R77D Stainless Steel 3/4 Exhaust System with Carbon Fiber Sleeve; Carbon Fiber Endcap
1210043520	R77D Stainless Steel 3/4 Exhaust System with Stainless Steel Sleeve; Carbon Fiber Endcap

FOR CLOSED COURSE COMPETITION ONLY; NOT INTENDED FOR STREET USE

	This product is designed for use in closed course racing and is not intended for highway use. In the state of California, it is illegal to modify the emission control system, which includes the fuel injection of any vehicle.
	You must know how to remove and replace your stock exhaust in order to install this product otherwise have it installed by a professional mechanic. Keep all stock parts from your existing system as some components may be necessary to install your new Yoshimura exhaust depending on the application.
	Read through all instructions before beginning installation. Exhaust system can be extremely hot. Let motorcycle cool down before beginning installation. Always wear hand and eye protection and take precautionary measures to avoid injury.



S = Stock

No.	Part #	Description	Qty
1	12100-419	Yoshimura Tailpipe	1
2		Yoshimura Muffler	1
	CRR77F096W	R77 CF Sleeve; CF Endcap	
	SRR77F096W	R77 SS Sleeve; CF Endcap	
	CRR77D096W	R77D CF Sleeve; CF Endcap	
	SRR77D096W	R77D SS Sleeve; CF Endcap	
3		Muffler Clamp	1
	1121-MPCL	Carbon Fiber Sleeve	
	1121-MPCLX	Stainless Steel Sleeve	
4	HT SHLDR77	Muffler Clamp Heatshield	1
5	M8X50	8mm x 50mm Socket Head Cap Screw	1
6	M8ALCSW-00	8MM Countersink Washer	2
7	12100-SPCR	Aluminum Spacer	1
8	8MMNUT	8mm Flange Nut	2

9	RACE-SPX-1	Short Exhaust Spring	2
10	M8X35	8mm x 35mm Socket Head Cap Screw	1
11	8MMWASHERL	8mm Large Washer	1
12	Z1022	Rubber Grommet	1
13	ALS-003	Aluminum Spacer	1
14	22055	Collector Clamp	2
15	12100-BRKT	Muffler Mount Bracket	2
16	M8X25	8mm x 25mm Socket Head Cap Screw	1
**	INS-04-K	R77 Low Volume Sound Insert (R77D - No Insert)	1
**	OXYBA12X125SS	O2 Bung Adapter	1
**	ST-200	Spring Puller Tool	1
**	17029	Yoshimura Sticker Sheet	1

-TOOLS REQUIRED-

Metric Socket Set
Combination Wrench Set
Torque Wrench
Metric Allen Wrench Set
Screwdriver

-REMOVAL-

1. **Loosen stock muffler clamp.**
2. **While securely supporting the muffler, remove the (2) muffler mount bolts and carefully remove stock muffler assembly.**
3. **Remove O2 sensor from belly muffler.**
4. **Loosen the (2) header clamps.**
5. **Loosen header nuts and carefully swing header towards the front of the bike.**
6. **Carefully slide the belly muffler off the header.**
7. **Remove exhaust gaskets as they will not be used with the Yoshimura system.**
8. **Swing header back and hand tighten header nuts. Do not torque at this time.**

-INSTALLATION-

1. *Small parts installation.*
 - a) **Install provided rubber grommet into chassis mount bracket and install aluminum spacer. See diagram for orientation.**
 - b) **Install rubber heatshield onto muffler clamp.**
 - c) **Install exhaust clamps over tailpipe collector.**
 - d) **Install provided spacer into stock rubber muffler mount bushing.**
 - e) **Install Yoshimura muffler mount bracket to stock muffler mount using the hardware provided in the kit. See parts diagram for proper orientation and order of hardware. Do not torque muffler mount bracket bolt at this time.**

Note: Install the longer tab of the Yoshimura bracket onto stock muffler mount.
2. *Installing the muffler tailpipe assembly.*
 - a) **Carefully slide tailpipe collector over stock header outlets.**
 - b) **Install chassis mount bolts using the provided and stock hardware. See diagram for orientation. Do not torque at this time.**
 - c) **Slide muffler clamp over muffler and install muffler mount bolt. See diagram for orientation.**
 - d) **Re-install stock O2 sensor onto Yoshimura tailpipe.**
 - e) **Torque header nuts to 23 Nm. (2.3 kg-m, 17 ft-lb)**
 - f) **Torque collector clamps to 13 Nm. (1.3 kg-m, 10 ft-lb)**
 - g) **Torque the (2) chassis mount bolts to 13 Nm. (1.3 kg-m, 10 ft-lb)**
 - h) **Torque muffler mount bracket bolt to 23 Nm. (2.3 kg-m, 17 ft-lb)**
 - i) **Torque muffler mount bolt to 13 Nm. (1.3 kg-m, 10 ft-lb)**
3. *Fitment check and Notes.*
 - a) **Before starting motorcycle, check for proper clearance between new exhaust system and rear suspension (i.e. tire, swing-arm, brake, rear shock, engine, and etc.) If any problem is found, please carefully follow through the installation steps again. If problem still persists, please call Yoshimura Tech Department at (800) 634-9166 / in CA (909) 628-4722.**
 - b) **It is recommended that the muffler and tailpipe be wiped down with rubbing alcohol to remove oil and fingerprints. This will help prevent tarnishing of the finish after the exhaust is heated up.**
 - c) **NOTE: After starting motorcycle, it is normal for new exhaust system and muffler to emit smoke until oil residue burns off.**