



RACE SERIES

Qualified Manufacturer Declared "Modified Part"


APPLICATION


YEAR	MODEL
2014-2015	Honda GROM / MSX125


PRODUCT

121200H220	RS9 SS Full-System Exhaust with Carbon Fiber Sleeve: Carbon Fiber Endcap
121200H320	RS9 SS Full-System Exhaust with Aluminum Sleeve: Carbon Fiber Endcap

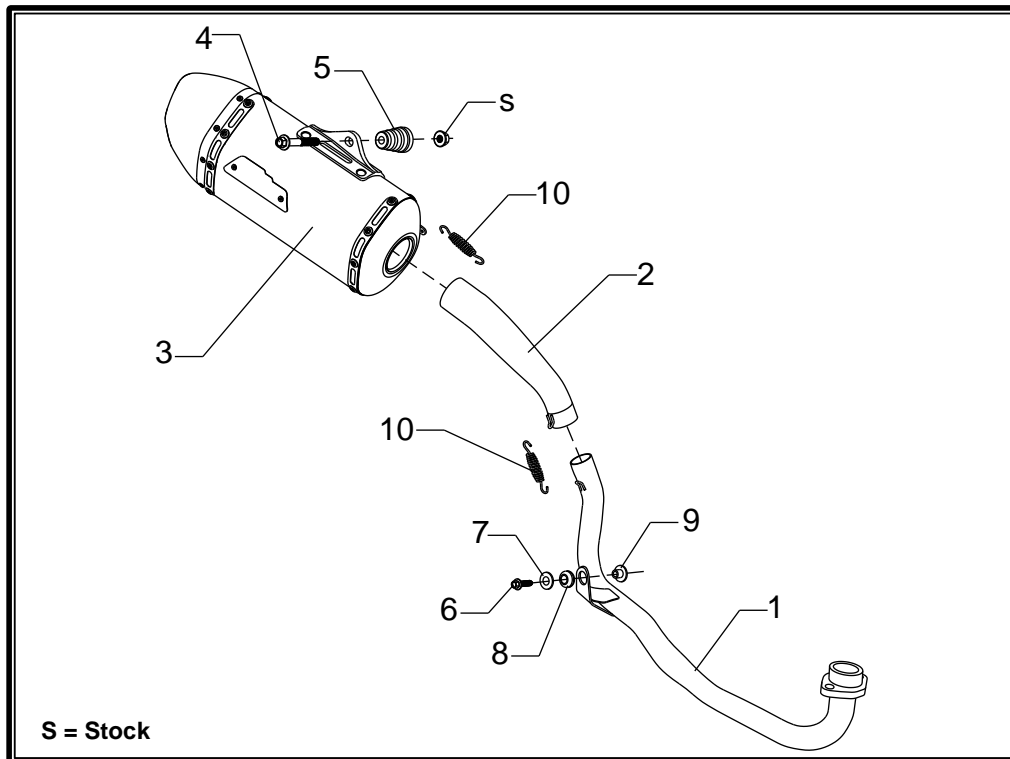
FOR CLOSED COURSE COMPETITION ONLY; NOT INTENDED FOR STREET USE

- 

This product is designed for use in closed course racing and is not intended for highway use. In the state of California, it is illegal to modify the emission control system, which includes the fuel injection of any vehicle.
- 

You must know how to remove and replace your stock exhaust in order to install this product otherwise have it installed by a professional mechanic. Keep all stock parts from your existing system as some components may be necessary to install your new Yoshimura exhaust depending on the application.
- 

Read through all instructions before beginning installation. Exhaust system can be extremely hot. Let motorcycle cool down before beginning installation. Always wear hand and eye protection and take precautionary measures to avoid injury.



No.	Part #	Description	Qty
1	12120-401	Yoshimura Header	1
2	12120-419	Yoshimura Tailpipe	1
3	121202H220-RMA 121202H320-RMA	Yoshimura Muffler Assembly Carbon Fiber Sleeve; CF Endcap Aluminum Sleeve; CF Endcap	1
4	M8X55H	8mm x 55mm Flanged Hex Head Bolt	1
5	ALS-042	Aluminum Spacer	1
6	M8X30H	8mm x 30mm Flanged Hex Head Bolt	1
7	8MMWASHERL	8mm Large Washer	1
8	Z1022	Rubber Grommet	1
9	ALS-003	Aluminum Spacer	1
10	RACE-SPX-1	Short Exhaust Spring	2
**	05747076	3mm Hex L-Key	1
**	ST-200	Spring Puller Tool	1
**	17029	Yoshimura Sticker Sheet	1

-TOOLS REQUIRED-

*Metric Socket Set • Combination Wrench Set • Torque Wrench
Metric Allen Wrench Set • Screwdriver*

-REMOVAL-

1. **Loosen the stock exhaust clamp on the header and muffler connection.**
2. **Remove the stock muffler heatshield.**
3. **While securely supporting the stock muffler, remove the two muffler mount bolts and carefully remove the stock muffler assembly.**
4. **Remove header chassis mount bolt.**
5. **While securely supporting the stock header, remove the two header nuts and remove header.**
**Note: Stock exhaust port gasket will be reused with the Yoshimura Full-System exhaust.
Inspect and replace gasket if necessary.**

-INSTALLATION-

1. **Install (Z1022) rubber grommet into Yoshimura header chassis mount bracket.**
2. **Install (ALS-003) aluminum spacer into (Z1022) rubber grommet as shown in the parts diagram.**
3. **Install Yoshimura header using the stock exhaust port gasket and stock header nuts. Do not torque at this time.**
4. **Secure header chassis mount to frame using the provided (M8X30H) bolt and (8MMWASHERL) washer. Do not torque at this time.**
5. **Carefully install Yoshimura muffler/tailpipe assembly over the Yoshimura header outlet.**
6. **Secure Yoshimura muffler to rear muffler mount using the (M8X55H) bolt and (ALS-042) aluminum spacer in conjunction with the stock muffler mount nut. See diagram for proper orientation and order of hardware.**
Note¹: It may be necessary to remove the exhaust spring to rotate muffler and tailpipe independently to achieve desired alignment.
Note²: Forward muffler mount will not be used.
7. **Torque muffler mount bolt to factory specification.**
8. **Re-install exhaust springs if removed in Step 6.**
9. **Install (RACE-SPX-1) exhaust spring between tailpipe and header connection.**
10. **Torque header chassis mount bolt to factory specification.**
11. **Torque header nuts to factory specification.**
12. **Fitment check and Notes.**
 - a. **Before starting motorcycle, check for proper clearance between new exhaust system and rear suspension (i.e. tire, swing-arm, brake, rear shock, engine, and etc.) If any problem is found, please carefully follow through the installation steps again. If problem still persists, please call Yoshimura Tech Department at (800) 634-9166 / in CA (909) 628-4722.**
 - b. **It is recommended that the muffler and tailpipe be wiped down with rubbing alcohol to remove oil and fingerprints. This will help prevent tarnishing of the finish after the exhaust is heated up.**
 - c. **Note: After starting motorcycle, it is normal for new exhaust system and muffler to emit smoke until oil residue burns off.**
 - d. **Note: 3mm Hex L-Key is provided to remove/install sound insert.**