



PERFORMANCE EXHAUST SYSTEM

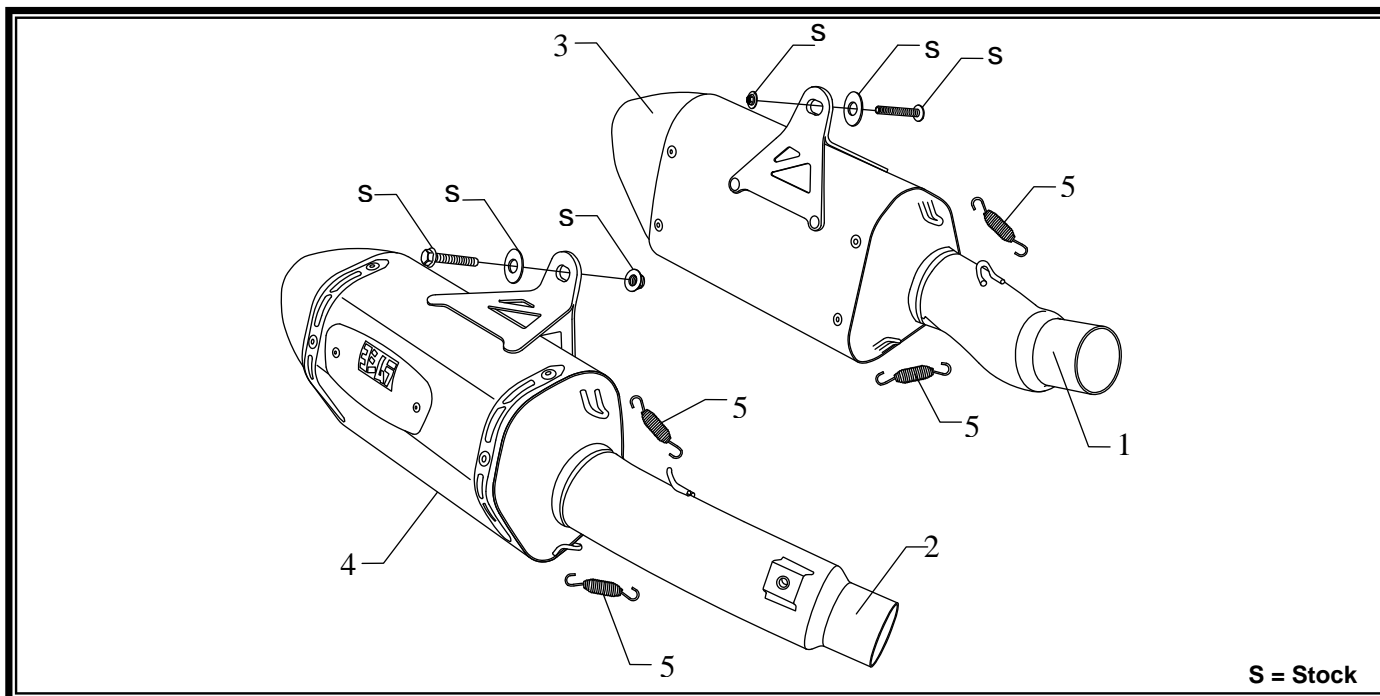
APPLICATION

YEAR	MODEL
2011-2013	Kawasaki Ninja 1000

PRODUCT

1415020220	R77 Stainless Steel Slip-On Exhaust System with Carbon Fiber Sleeve; Carbon Fiber Endcap
1415020520	R77 Stainless Steel Slip-On Exhaust System with Stainless Steel Sleeve; Carbon Fiber Endcap

!	This product is designed for use in closed course racing and is not intended for highway use. In the state of California, it is illegal to modify the emission control system, which includes the fuel injection of any vehicle.
!	You must know how to remove and replace your stock exhaust in order to install this product otherwise have it installed by a professional mechanic. Keep all stock parts from your existing system as some components may be necessary to install your new Yoshimura exhaust depending on the application.
!	Read through all instructions before beginning installation. Exhaust system can be extremely hot. Let motorcycle cool down before beginning installation. Always wear hand and eye protection and take precautionary measures to avoid injury.



No.	Part #	Description	Qty
1	14150-426	Left Tailpipe	1
2	14150-427	Right Tailpipe	1
3	1412202-LMA 1412205-LMA	Yoshimura Muffler CF Sleeve; Left SS Sleeve; Left	1
4	1412202-RMA 1412205-RMA	CF Sleeve; Right SS Sleeve; Right	1
5	RACE-SPX-1	Short Spring w/ Insulator 1.8"	4
**	INS-04-K	Low Volume Sound Insert	2
**	ST-200	Spring Puller Tool	1
**	17029	Yoshimura Sticker Sht	1

-TOOLS REQUIRED-

Metric Socket Set

Combination Wrench Set

Torque Wrench

Metric Allen Wrench Set

-REMOVAL-

1. Exhaust Valve Cable Removal

- a) Remove rider seat as per Factory Service Manual.**
- b) Remove metal retaining clip securing the cables to the servo motor.**
- c) Remove cables from servo motor. (Servo will be left with no cables connected.)**

2. Removing the stock muffler.

- a) Remove right side muffler heatshield bolt and heatshield.**
- b) Loosen right side exhaust clamp.**
- c) While securely supporting the muffler, remove the muffler mount bolt.**
- d) Carefully remove muffler and route the disconnected servo cables through the inside of the frame.**
- e) Loosen left side exhaust clamp.**
- f) While securely supporting the muffler, remove the muffler mount bolt and remove muffler.**

-INSTALLATION-

1. Installing the Yoshimura Slip-On Exhaust System.

- a) Install OEM exhaust gaskets onto left and right Yoshimura tailpipe inlets. (Note: Inspect exhaust gasket and replace if necessary. P/N: 11061-0726)**
- b) Insert right Yoshimura tailpipe and muffler assembly into right OEM exhaust header outlet.**
- c) Using the stock hardware, secure Yoshimura muffler hanger to muffler mount.**
- d) Tighten and torque muffler hanger and exhaust clamp to 25 Nm. (18.5 ft-lb)**
- e) Re-install stock heatshield using stock heatshield bolt.**
- f) Tighten and torque heatshield bolt to 10 Nm. (7 ft-lb)**
- g) Insert left Yoshimura tailpipe and muffler assembly into left header outlet.**
- h) Using the stock hardware, secure Yoshimura muffler hanger to muffler mount.**
- i) Tighten and torque muffler hanger and exhaust clamp to 25 Nm. (18.5 ft-lb)**

2. Fitment check and Notes.

- a) Before starting motorcycle, check for proper clearance between new exhaust system and rear suspension (i.e. tire, swing-arm, brake, rear shock, engine, and etc.) If any problem is found, please carefully follow through the installation steps again. If problem still persists, please call Yoshimura Tech Department at (800) 634-9166 / in CA (909) 628-4722.**
- b) It is recommended that the muffler and tailpipe be wiped down with rubbing alcohol to remove oil and fingerprints. This will help prevent tarnishing of the finish after the exhaust is heated up.**
- c) NOTE: After starting motorcycle, it is normal for new exhaust system and muffler to emit smoke until oil residue burns off.**