



YOSHIMURA

RESEARCH&DEVELOPMENT OF AMERICA, INC.

5420 DANIELS STREET STE A, CHINO CA., 91710 · (800) 634-9166 · (909) 628-4722 · FAX (909) 591-2198

www.yoshimura-rd.com

RACE SERIES

Qualified Manufacturer Declared "Modified Part"

2008~2013

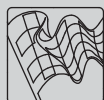
Kawasaki Versys 650

1435212 (SS/CF)

1435215 (SS/SS)

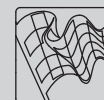
TRC-D Stainless Steel Full-System

FOR CLOSED COURSE COMPETITION ONLY; NOT INTENDED FOR STREET USE



Race Series systems are:

- NOT CARB/EPA tail-pipe emissions compliant.
- NOT street legal.
- For "Closed Course Competition" use only.



You must know how to remove and replace your stock exhaust in order to install this product otherwise have it installed by a professional mechanic. Keep all stock parts from your existing system as some components may be necessary to install your new Yoshimura exhaust depending on the application. Read through all instructions before beginning installation. Exhaust system can be extremely hot. Let motorcycle cool down before beginning installation. Always wear hand and eye protection and take precautionary measures to avoid injury.



NOTE: IN THE STATE OF CALIFORNIA, IT IS ILLEGAL TO MODIFY THE EMISSION CONTROL SYSTEM, WHICH INCLUDES THE CARBURETORS OF ANY VEHICLE.

Caution: Exhaust system can be extremely hot. Let motorcycle cool down before beginning installation. Always wear hand and eye protection and take precautionary measures to avoid injury.

Note: Read through all instructions before beginning installation.

Tools Needed:

Metric Socket Set
Ratchet and Extension
Metric Combination Wrench Set
Metric Allen Wrench Set
Torque Wrench

Installation Steps:

1. Remove stock system.
 - Loosen muffler clamp.
 - Remove header bolts.
 - Remove header bolts and remove header.
Note: Header must be removed to provide clearance for stock muffler removal.
 - Remove plastic right rearsset cover and rearsset.
 - Remove the muffler mounting two bolts.
 - Remove stock muffler.
2. Install Yoshimura Slip-on
 - Reinstall stock header.
 - Reinstall rearsset and rearsset cover.
 - Insert rubber grommet and spacer into Yoshimura bracket. (See parts diagram for orientation.)
 - Remove rear master cylinder bolts.
 - Insert Yoshimura bracket between the rearsset and master cylinder.
Bolt together using stock bolts. Torque to 12 lb-ft (16.5 N-m).
 - Insert supplied collector clamp over Yoshimura tailpipe.
 - Install muffler using supplied bolt and washer.
 - Torque muffler clamp to 14 lb-ft (18.5 N-m).
 - Torque muffler mounting bolt to 18 lb-ft (23.5 N-m).
3. Check for proper clearance between new exhaust system and motorcycle. (i.e. Swing-arm, body work, etc.) If any problem is found, please carefully follow through the installation steps again. If problem still persists, please call Yoshimura technical department at (800)634-9166 / in CA (909)628-4722.

Note: After starting motorcycle, it is normal for new exhaust system and muffler to smoke until oil residue burns off.

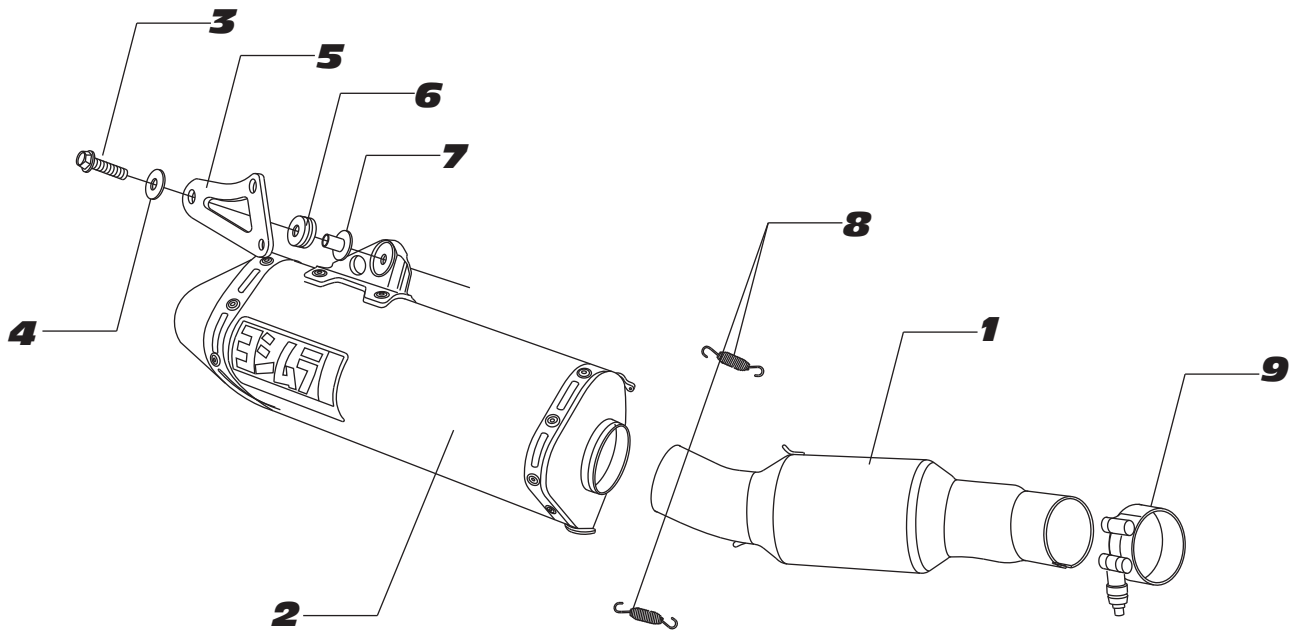


Fig. 1



Fig. 2

#143521(2,5,7)



S=STOCK

Parts Diagram

NO.	DESCRIPTION	QTY	PART #
1	Yoshimura Tailpipe	1	1435-435
2	Yoshimura TRCD Muffler with Carbon Fiber TRCD with Stainless Steel TRCD with Titanium TRCD	1	1435212-RMA 1435215-RMA 1435217-RMA
3	8mm X 25mm Flanged Hex Head Bolt	1	M8X25H
4	8mm Washer Large	1	8MMWASHERL
5	1435 Muffler Bracket	1	1435-BKT
6	Rubber Grommet	1	Z1022
7	Aluminum Spacer	1	ALS-003
8	Small Exhaust Spring	2	RACE-SPX-1
9	Exhaust Collector Clamp	1	22059
**	Spring Puller Tool	1	ST-200
**	Yoshimura Vinyl Sticker	1	17029