



RACE SERIES

Qualified Manufacturer Declared "Modified Part"

APPLICATION

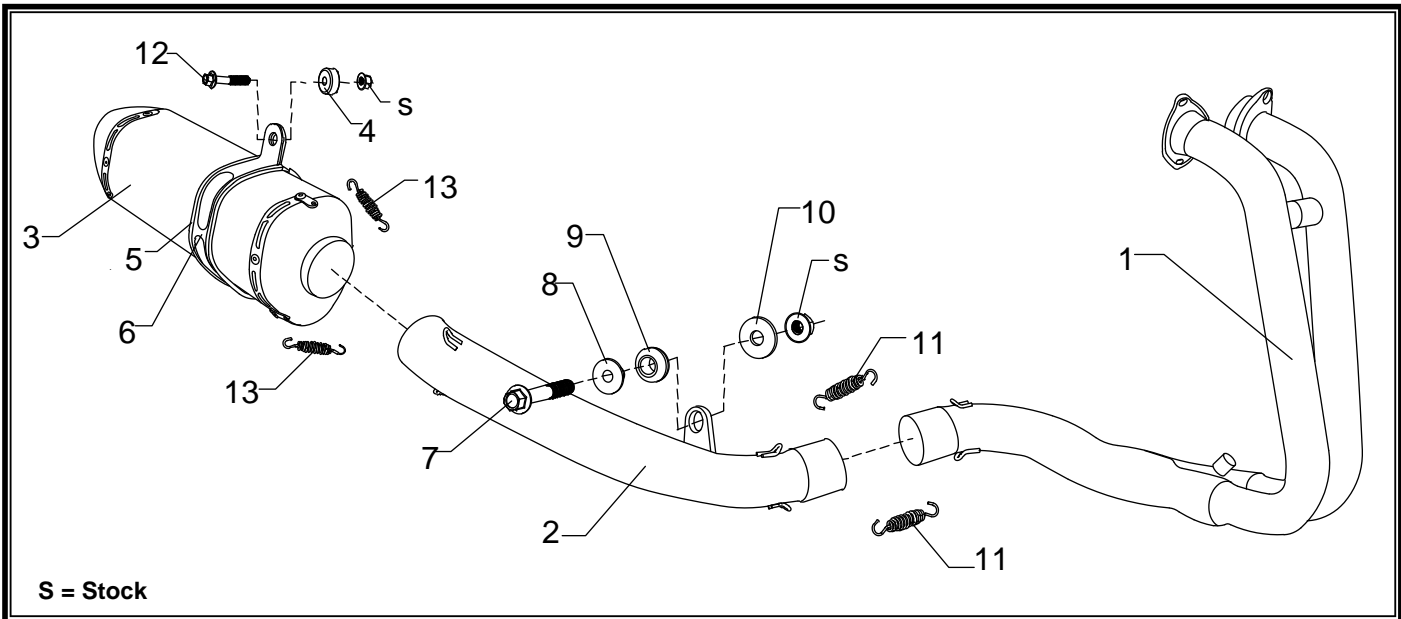
YEAR	MODEL
2013-2017	Kawasaki Ninja 300

PRODUCT

147010J220	R77 SS Full-System Exhaust with Carbon Fiber Sleeve: Carbon Fiber Endcap
147010J520	R77 SS Full-System Exhaust with Stainless Steel Sleeve: Carbon Fiber Endcap

FOR CLOSED COURSE COMPETITION ONLY; NOT INTENDED FOR STREET USE

	<i>This product is designed for use in closed course racing and is not intended for highway use. In the state of California, it is illegal to modify the emission control system, which includes the fuel injection of any vehicle.</i>
	<i>You must know how to remove and replace your stock exhaust in order to install this product otherwise have it installed by a professional mechanic. Keep all stock parts from your existing system as some components may be necessary to install your new Yoshimura exhaust depending on the application.</i>
	<i>Read through all instructions before beginning installation. Exhaust system can be extremely hot. Let motorcycle cool down before beginning installation. Always wear hand and eye protection and take precautionary measures to avoid injury.</i>



No.	Part #	Description	Qty
1	14701-401	Yoshimura Header	1
2	14700-419	Yoshimura Tailpipe	1
3	CRR77M12 SRR77M12	Yoshimura Muffler Carbon Fiber Sleeve Stainless Steel Sleeve	1
4	ALS-035	Aluminum Spacer	1
5	HT SHLDR77	Muffler Clamp Heatshield	1
6	YM7M-MPCA YM7M-MPCAX	Muffler Clamp CF Sleeve SS Sleeve	1
7	M8X30H	8mm x 30mm Flanged Hex Head Bolt	1
8	ALS-003	Aluminum Spacer	1
9	Z1022	Rubber Grommet	1
10	8MMWASHERL	8mm Large Washer	1
11	RACE-SPS-1	Medium Spring	2
12	M10X70H	10mm x 70mm Flanged Hex Head Bolt	1
13	RACE-SPX-1	Short Spring	2
**	M18X13PLG	O2 Bung Plug	1
**	INS-04-K	Low Volume Insert	1
**	ST-200	Spring Puller Tool	1
**	17029	Yoshimura Sticker Sheet	1

-TOOLS REQUIRED-

Metric Socket Set • Combination Wrench Set • Torque Wrench • Metric Allen Wrench Set

-REMOVAL-

1. **Remove stock heatshield by removing the heatshield bolt and loosening hose clamp securing stock heatshield to header.**
2. **Loosen stock exhaust clamp.**
3. **While securely supporting the stock muffler, remove muffler mount bolt to remove muffler.**
4. **Remove left and right side lower cowling.**
5. **Remove the (4) header nuts.**
6. **While securely supporting the header, remove the chassis mount bolt securing the stock header to the frame. Carefully remove header.**

Note¹: Stock exhaust port gaskets will be used with the Yoshimura full-system exhaust. Inspect gaskets and replace if necessary.

Note²: Remove O2 sensor from the stock header on 2015-2016 models.

-INSTALLATION-

1. **Install Yoshimura header using the stock header nuts. Do not torque header nuts at this time.**
2. **Install provided rubber grommet into Yoshimura tailpipe chassis mount bracket.**
3. **Install Yoshimura tailpipe onto Yoshimura header.**
4. **Secure tailpipe chassis mount to frame using the hardware supplied in the kit. See diagram for proper orientation and order of hardware. Do not torque chassis mount bolt at this time.**

Note: Chassis mount bracket on tailpipe mounts to the inside of frame.

Orientation is as follows: 8mm bolt, aluminum spacer, rubber grommet, washer, and stock nut.

5. **Install rubber heatshield onto muffler clamp.**
6. **Install Yoshimura muffler assembly by sliding over Yoshimura tailpipe.**
7. **Slide Yoshimura muffler clamp over muffler and align to stock muffler mount. Install using provided 10mm bolt, provided aluminum spacer, and stock nut. See diagram for proper orientation.**

Note¹: Muffler clamp and aluminum spacer mounts to the outside of the stock muffler mount.

Note²: If required, loosen the (2) right passenger foot peg mount bolts to achieve proper alignment with muffler clamp.

8. **Torque muffler mount bolt to factory specification. If loosened, torque passenger foot peg mount bolts to factory specification.**
9. **Torque chassis mount bolt to factory specification.**

10. Torque header nuts to factory specification.

Note¹: For 2013-2014 models, install O2 sensor plug into the Yoshimura header.

Note²: For 2015-2016 models, re-install the stock O2 sensor into the Yoshimura header.

11. Before starting motorcycle, check for proper clearance between new exhaust system and rear suspension (i.e. tire, swing-arm, brake, rear shock, engine, and etc.) If any problem is found, please carefully follow through the installation steps again. If problem still persists, please call Yoshimura Tech Department at (800) 634-9166 / in CA (909) 628-4722.

12. It is recommended that the muffler and tailpipe be wiped down with rubbing alcohol to remove oil and fingerprints. This will help prevent tarnishing of the finish after the exhaust is heated up.

NOTE: After starting motorcycle, it is normal for new exhaust system and muffler to emit smoke until oil residue burns off.