



# YOSHIMURA

RESEARCH&DEVELOPMENT OF AMERICA, INC.

5420 DANIELS STREET STE A, CHINO CA., 91710 · (800) 634-9166 · (909) 628-4722 · FAX (909) 591-2198

[www.yoshimura-rd.com](http://www.yoshimura-rd.com)

## **RACE SERIES**

Qualified Manufacturer Declared "Modified Part"

**2018**

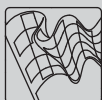
**Benelli TNT 135**

**19135AR520 (SS/CF)**

**Works Finish**

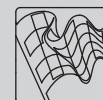
**RS-9T Stainless Steel Full-System**

**FOR CLOSED COURSE COMPETITION ONLY; NOT INTENDED FOR STREET USE**



Race Series systems are:

- NOT CARB/EPA tail-pipe emissions compliant.
- NOT street legal.
- For "Closed Course Competition" use only.

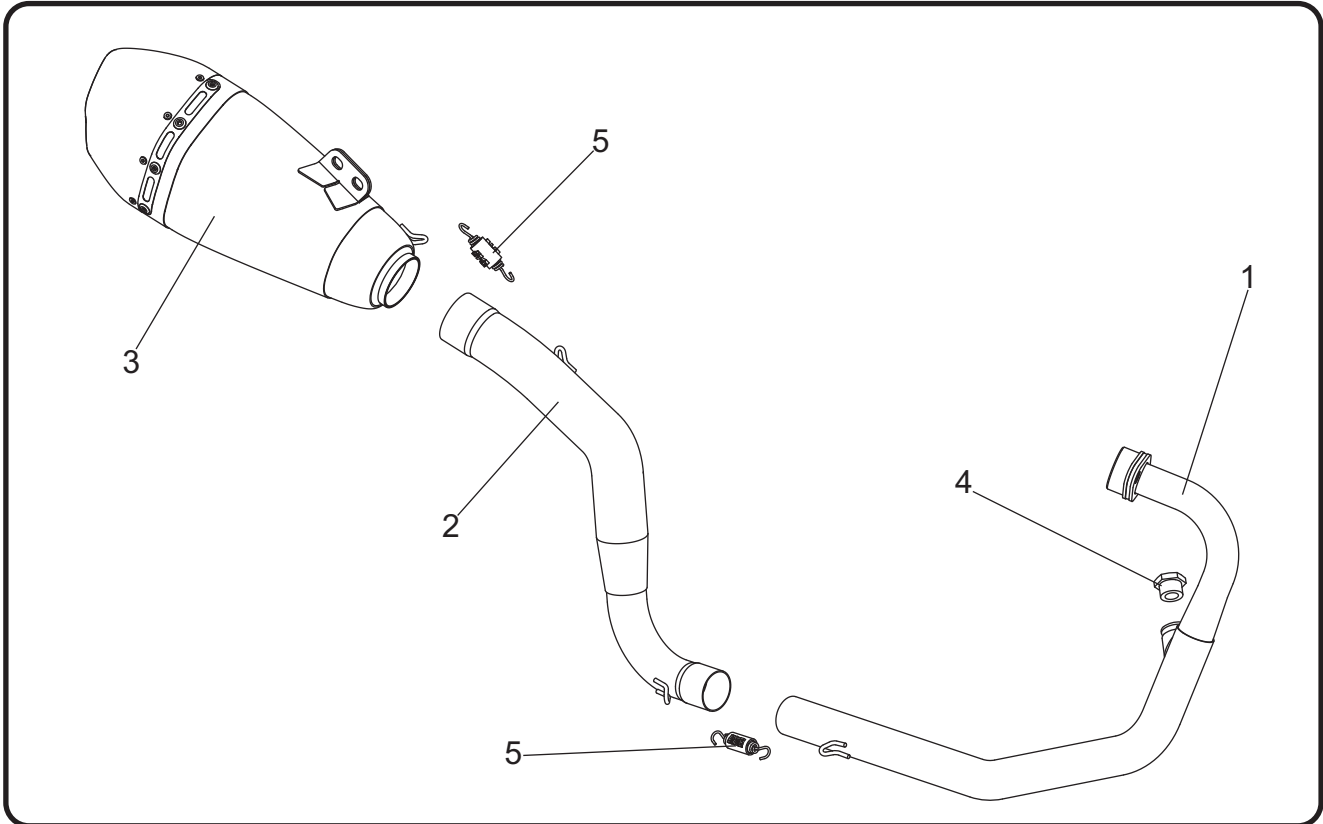


*You must know how to remove and replace your stock exhaust in order to install this product otherwise have it installed by a professional mechanic. Keep all stock parts from your existing system as some components may be necessary to install your new Yoshimura exhaust depending on the application. Read through all instructions before beginning installation. Exhaust system can be extremely hot. Let motorcycle cool down before beginning installation. Always wear hand and eye protection and take precautionary measures to avoid injury.*



NOTE: IN THE STATE OF CALIFORNIA, IT IS ILLEGAL TO MODIFY THE EMISSION CONTROL SYSTEM, WHICH INCLUDES THE CARBURETORS OF ANY VEHICLE.

## Assembly Diagram



| No. | Item           | Description                         | Qty. |
|-----|----------------|-------------------------------------|------|
| 1   | 19135-401      | Yoshimura Header                    | 1    |
| 2   | 19135-419      | Yoshimura Tailpipe                  | 1    |
| 3   | 19135AR520-RMA | Yoshimura Muffler Assembly          | 1    |
| 4   | OXYBA12X125SS  | M18 to M12 O2 Bung Adapter          | 1    |
| 5   | RACE-SPS-1     | Medium Exhaust Spring               | 2    |
| **  | 05747076       | 3mm Allen Key                       | 1    |
| **  | INS-RS9B-K     | Low Volume Sound Insert (Installed) | 1    |
| **  | ST-200         | Spring Puller Tool                  | 1    |
| **  | 17029          | Sticker Kit Sheet                   | 1    |

\*\* Not shown in diagram.

**CAUTION:** Exhaust system can be extremely hot. Let motorcycle cool down before beginning installation. Always wear hand and eye protection and take precautionary measures to avoid injury.

**WARNING:** Always properly support vehicle with a stand and/or lift when servicing or performing any work. Unstable vehicles may present dangerous conditions and may cause property damage and/or personal injury.

**NOTE:** Read through all instructions before beginning installation.

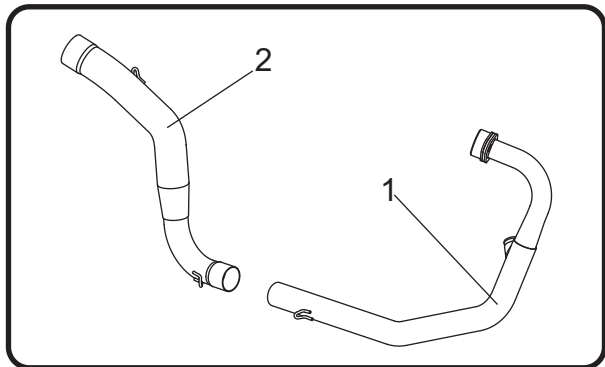
## Removal

1. Loosen stock muffler exhaust clamp.
2. While securely supporting the stock muffler, remove the two muffler mount bolts and carefully remove the stock muffler.
3. Remove stock O2 sensor from header.
4. Remove the two header chassis mount bolts. While securely supporting the stock header, remove header nuts and carefully remove the stock header.

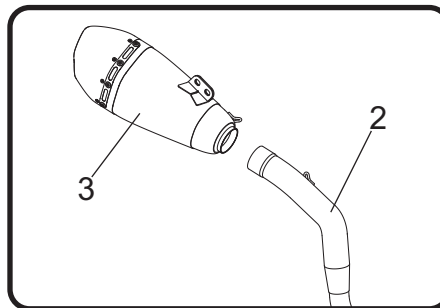
Note: The stock exhaust port gasket will be re-used with the Yoshimura full-system. Inspect and replace gasket if necessary.

## Installation

1. Install (No. 1) 19135-401, header using the stock header nuts. Do not torque at this time.
2. Install (No. 2) 19135-419, tailpipe inlet onto (No. 1) 19135-401, header outlet.

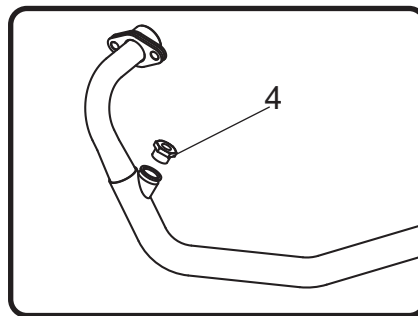


3. Install (No. 3) 19135AR520-RMA, muffler onto (No. 2) 19135-419, tailpipe outlet. Align muffler bracket to frame and secure using the stock muffler mount bolts. Torque muffler mount bolts to factory specification.



4. Install (No. 5) RACE-SPS-1, exhaust springs between muffler to tailpipe connection and between tailpipe and header connection using ST-200, spring puller tool supplied in the kit.
5. Torque header nuts to factory specification.
6. Install (No. 4) OXYBA12X125SS, O2 bung adapter into header and re-install the stock O2 sensor.

Note: O2 bung adapter is not required if larger M18 aftermarket O2 sensor is used to adjust fuel mapping for closed course competition use.



7. Before starting vehicle, check for proper clearance between new exhaust system and rear suspension (i.e. tire, swingarm, brakes, rear shock, and etc.) If any problem is found, please carefully follow through the installation steps again. If problem still persists, please call Yoshimura Tech Department at (800) 634-9166 / in CA (909) 628-4722.
8. It is recommended that the muffler and tailpipe be wiped down with rubbing alcohol to remove oil and fingerprints. This will help prevent tarnishing of the finish after the exhaust is heated up.

Note: After starting vehicle, it is normal for new exhaust system and muffler to emit smoke until oil residue burns off.

## **Works Finish Care & Maintenance**

---

Before starting vehicle, clean pipe thoroughly using a soft cloth and rubbing alcohol to remove any oil and finger prints.

The color of the exhaust will change once the system has gone through a heat cycle of 15 minutes or more. Color will vary depending on lean/rich conditions.

Clean using a soft cloth and soap. Do not use abrasive materials as it will scratch the surface.

Surface reconditioning services are available to remove scratches and undesirable discoloration due to extreme heat. Contact Yoshimura Tech Department at (800) 634-9166 / in CA (909) 628-4722 for more information.