



# YOSHIMURA

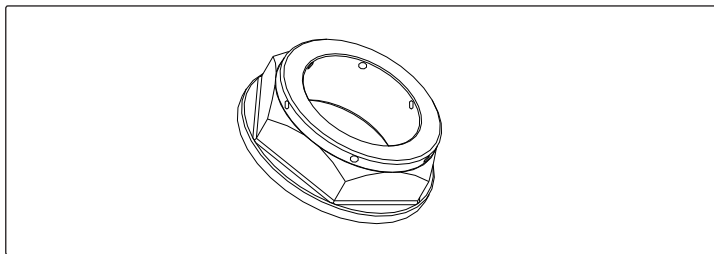
RESEARCH&DEVELOPMENT OF AMERICA, INC.

5420 DANIELS STREET STE A, CHINO CALIF. 91710 · (800)634-9166 · (909)628-4722 · FACSIMILE (909)591-2198

[www.yoshimura-rd.com](http://www.yoshimura-rd.com)

## STEERING STEM NUT

### 2166-810-K



### Instructions:

1. Remove stock steering head nut.
2. Install Yoshimura steering head nut. Torque to 65 lb-ft (90 Nm).

If safety wire is required, loop safety wire through the holed drilled in the nut and secure to stationary location on upper triple clamp.

NOTE: Installation to be performed by qualified technician only.

NO.	DESCRIPTION	QTY	PART #
1	Stem Nut	1	2166-810
2	Yoshimura Sticker	2	17020C



# YOSHIMURA

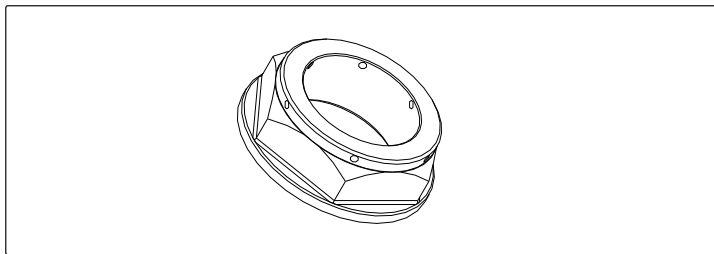
RESEARCH&DEVELOPMENT OF AMERICA, INC.

5420 DANIELS STREET STE A, CHINO CALIF. 91710 · (800)634-9166 · (909)628-4722 · FACSIMILE (909)591-2198

[www.yoshimura-rd.com](http://www.yoshimura-rd.com)

## STEERING STEM NUT

### 2166-810-K



### Instructions:

1. Remove stock steering head nut.
2. Install Yoshimura steering head nut. Torque to 65 lb-ft (90 Nm).

If safety wire is required, loop safety wire through the holed drilled in the nut and secure to stationary location on upper triple clamp.

NOTE: Installation to be performed by qualified technician only.

NO.	DESCRIPTION	QTY	PART #
1	Stem Nut	1	2166-810
2	Yoshimura Sticker	2	17020C