



YOSHIMURA

RESEARCH&DEVELOPMENT OF AMERICA, INC.

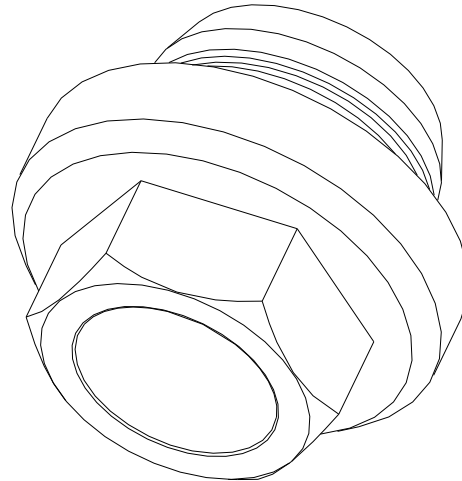
5420 DANIELS STREET STE A, CHINO CALIF. 91786 · (800)634-9166 · (909)628-4722 · FACSIMILE (909)591-2198

www.yoshimura-rd.com

FLOAT BOWL BOLT

SUZUKI
05
RMZ-450

2190-702



Part List:

<i>DESCRIPTION</i>	<i>QTY</i>	<i>PART #</i>
KEIHIN CARB FLOAT BOWL BOLT	1	2190-702
Yoshimura *USA* Sticker	2	17020C

Caution: Engine and exhaust system can be extremely hot. Let motorcycle cool down before beginning installation.

Note: Read through all instructions before beginning installation.

Tools Needed:

17 mm wrench

Installation Steps:

- 1 Remove the stock float bowl bolt. (See Fig. 1)
(Note: Use a rag to catch residual gas from the carburetor (See Fig. 2))
- 2 Remove the stock O-ring from the stock float bowl bolt and place it onto the new float bowl bolt (See Fig. 3).
- 3 Install the new float bowl bolt. (See Fig. 4)

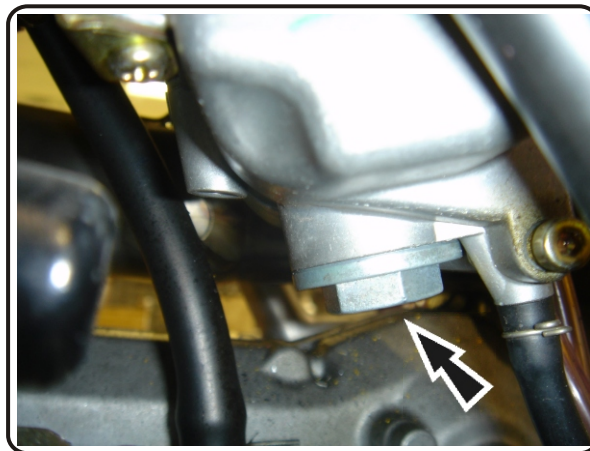


Fig. 1

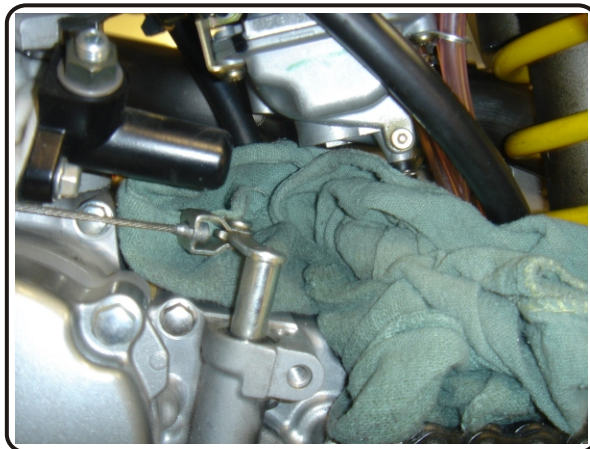


Fig. 2



Fig. 3

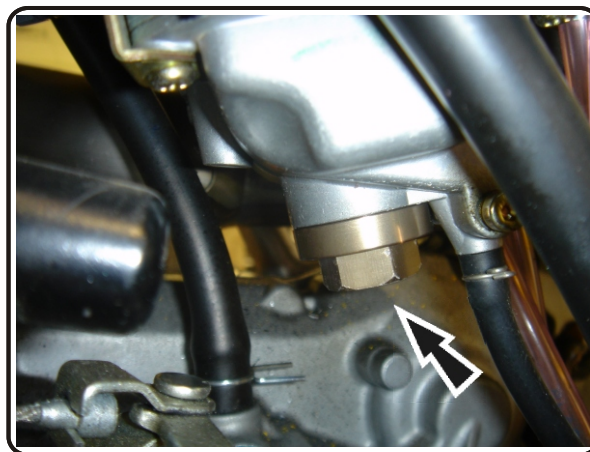


Fig. 4