



YOSHIMURA

RESEARCH & DEVELOPMENT OF AMERICA, INC.

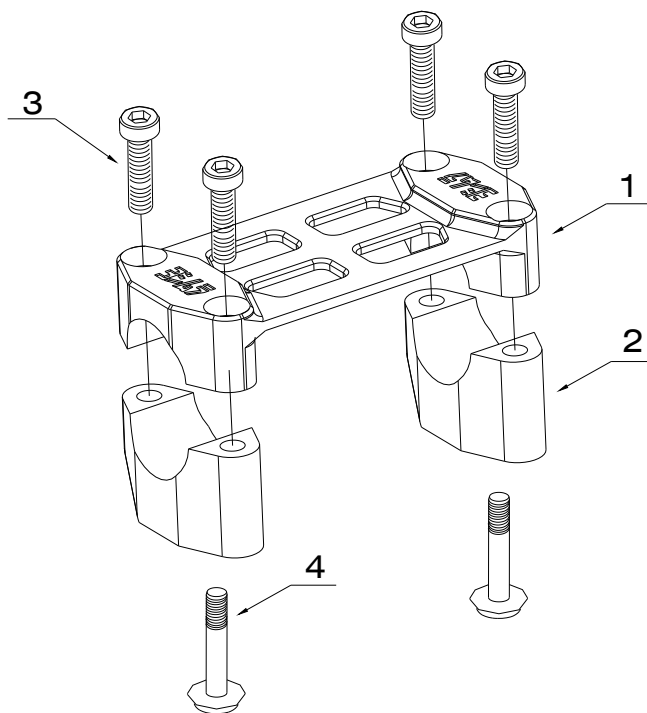
5420 DANIELS STREET STE A, CHINO CALIF. 91786 · (800)634-9166 · (909)628-4722 · FACSIMILE (909)591-2198

www.yoshimura-rd.com

HANDLEBAR MOUNT

SUZUKI
2005
RMZ-450

2190-903-K



Part List:

	DESCRIPTION	QTY	PART #
1	RMZ450 2005 Top Bar Mount	1	2190-903U
2	RMZ450 2005 Lower Bar Mount	1	2190-903L
3	8mm x 25mm SOC Head Cap Screw	4	M8X25
4	10mm x 60mm Flanged Hex Head Bolt	2	M10X60H
**	Yoshimura *USA* Sticker	2	17020C

Caution: Engine and exhaust system can be extremely hot. Let motorcycle cool down before beginning installation.

Note: Read through all instructions before beginning installation.

Tools Needed:

14mm and 10mm Socket
6 mm Allen Socket
Ratchet

Installation Steps:

- 1 Remove the two nuts located under the top triple clamp. (See Fig. 1)
- 2 Remove the stock top handlebar mount. (See Fig. 2)
- 3 Remove handlebars. Remove lower handlebar mount.
- 4 Remove top steel insert with rubber grommet from stock bolt and reinstall it back on triple clamp. Reinstall lower metal spacer and rubber grommet. (See Fig. 3, 4)
- 5 Install lower Yoshimura handlebar mounts securing it with the two 10mm bolts (Do NOT tighten them up at this time).

NOTE: This handlebar mount has a 10mm offset. By turning the handlebar mount around, you can set this offset forward or back. (See Fig. 5, 6)

- 6 Reinstall the handlebars. Reinstall top Yoshimura handlebar mount securing it with four supplied bolts. (See Fig. 7)

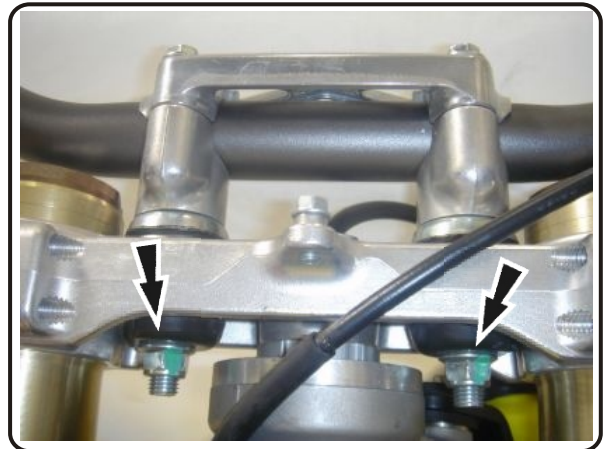


Fig. 1

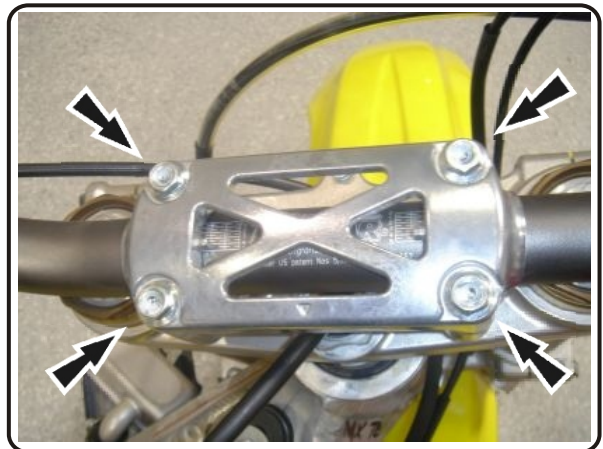


Fig. 2

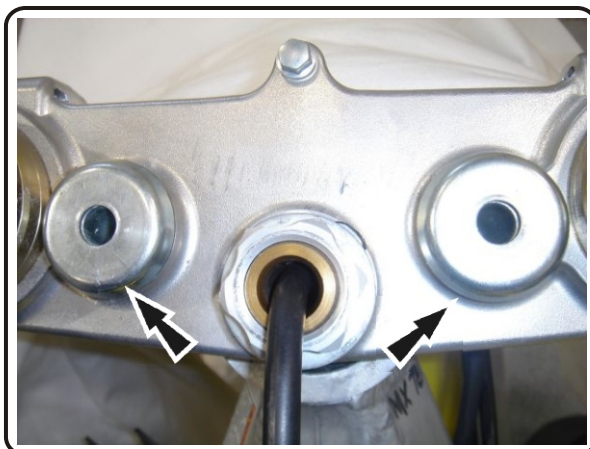


Fig. 3

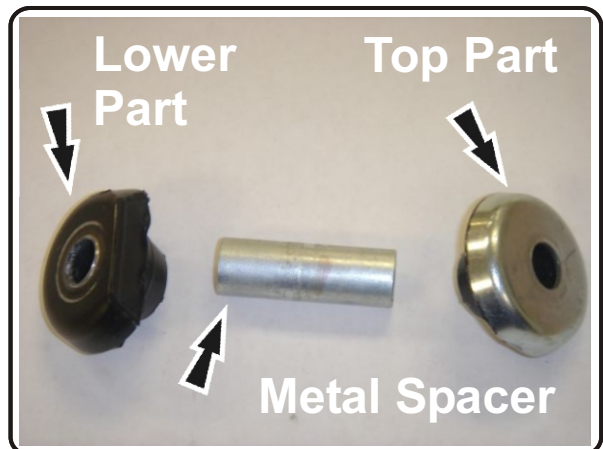


Fig. 4

Installation Steps:

- 7 Now, you can tighten the two 10mm bolts that hold the lower Yoshimura handlebar mounts.

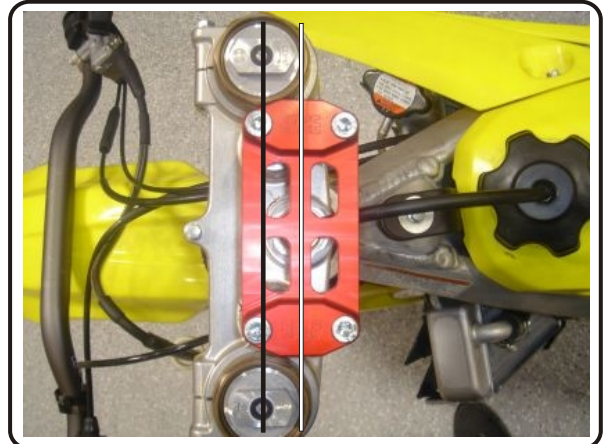


Fig. 5

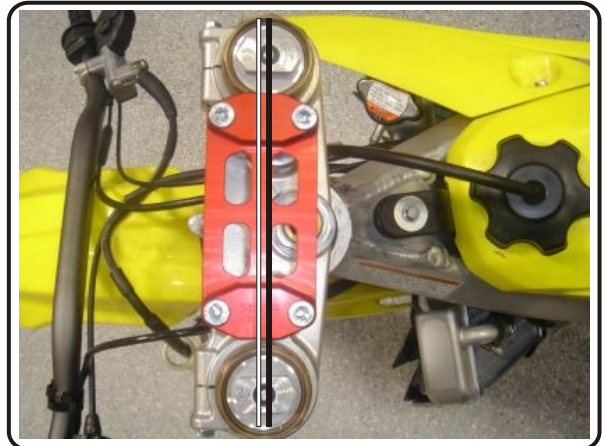


Fig. 6



Fig. 7