



# PERFORMANCE EXHAUST SYSTEM

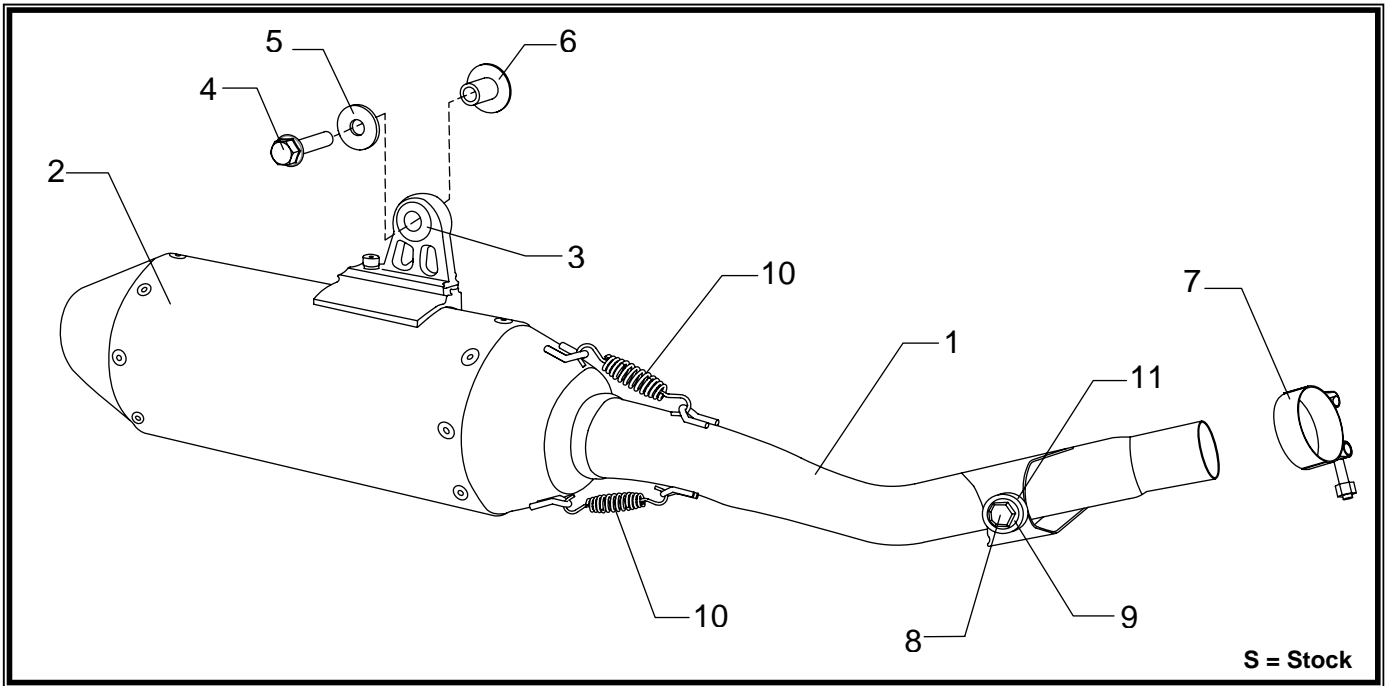
## APPLICATION

YEAR	MODEL
2008-2009	Yamaha TT-R230

## PRODUCT

232302C350	RS2 SS Slip-On Exhaust with Aluminum Sleeve; Spark Arrested
------------	---

⚠	<i>This product is designed for use in closed course racing and is not intended for highway use. In the state of California, it is illegal to modify the emission control system, which includes the fuel injection of any vehicle.</i>
⚠	<i>You must know how to remove and replace your stock exhaust in order to install this product otherwise have it installed by a professional mechanic. Keep all stock parts from your existing system as some components may be necessary to install your new Yoshimura exhaust depending on the application.</i>
⚠	<i>Read through all instructions before beginning installation. Exhaust system can be extremely hot. Let motorcycle cool down before beginning installation. Always wear hand and eye protection and take precautionary measures to avoid injury.</i>



S = Stock

No.	Part #	Description	Qty
1	23230-152	Yoshimura Tailpipe	1
2	232302C350	Yoshimura Muffler	1
3	011257-00	Rubber Bushing	1
4	M8X35H	8mm x 35mm Flanged Hex Bolt	1
5	8MMWASHERL	8mm Large Washer	1
6	ALS-001	Aluminum Spacer	1
7	22053	Exhaust Clamp	1
8	M8X16H	8mm x 16mm Flanged Hex Bolt	1
9	8MMWASHER	8mm Washer	1
10	RACE-SPS-1	Med Spring w/ Insulator 2.3"	2
11	8X4SPCR	Aluminum Spacer	1
**	347PLUG	Muffler Wash Plug	1
**	ST-200	Spring Puller Tool	1
**	17029	Yoshimura Sticker Sht	1
**	M6X12	6mm x 12mm Muffler Bracket Adjustment Screw	1
**	6x10LW	6mm x 10mm Split Lock Washer	1

## **-TOOLS REQUIRED-**

*Metric Socket Set*

*Combination Wrench Set*

*Torque Wrench*

*Metric Allen Wrench Set*

*Rotary Tool / Handsaw*

## **-REMOVAL-**

- 1. Remove the (3) bolts securing the right side panel.**
- 2. Loosen exhaust clamp at the tailpipe and header connection.**
- 3. Remove chassis mount bolt securing the tailpipe to the frame.**
- 4. While securely supporting the muffler, remove the muffler mount bolt.**
- 5. Carefully slide stock muffler assembly off of header.**

*Note: The stock exhaust gasket will not be used with the Yoshimura system.*

*Note: A section of the rear fender will need to be cut using a rotary tool or handsaw to allow room for the Yoshimura muffler mount bracket. See Fig. 1 for cut location.*



**Fig. 1**

## **-INSTALLATION-**

- Small parts installation.*
  - a) Install provided rubber bushing into muffler mount bracket.**
  - b) Install provided aluminum spacer into rubber bushing. See parts diagram for orientation.**
  - c) Slide provided exhaust clamp over Yoshimura tailpipe.**
- Installing the Yoshimura muffler tailpipe assembly.*
  - a) Carefully install Yoshimura muffler tailpipe assembly by sliding onto stock header.**
  - b) Align and install provided chassis mount bolt, washer, and spacer. Install aluminum spacer between frame and tailpipe chassis mount bracket. Do not torque at this time.**
  - c) Align and install muffler mount bolt and washer. Do not torque at this time.**

*Note: The Yoshimura muffler mount bracket can be adjust forward and back by loosening the 6mm socket head cap screw on the bracket. Removal of the muffler springs may also be necessary to twist the muffler on tailpipe independently to achieve desired alignment. Then re-install muffler springs.*

- d) Torque chassis mount bolt and muffler mount bolt to 23 Nm (2.3 kg-m, 17 ft-lb).**
- e) Torque exhaust clamp to 13 Nm (1.3 kg-m, 10 ft-lb).**

3. *Re-install side panel.*

a) **Re-install side panel using the reverse steps of removal.**

4. *Fitment check and Notes.*

- a) **Before starting motorcycle, check for proper clearance between new exhaust system and rear suspension (i.e. tire, swing-arm, brake, rear shock, engine, and etc.) If any problem is found, please carefully follow through the installation steps again. If problem still persists, please call Yoshimura Tech Department at (800) 634-9166 / in CA (909) 628-4722.**
- b) **It is recommended that the muffler and tailpipe be wiped down with rubbing alcohol to remove oil and fingerprints. This will help prevent tarnishing of the finish after the exhaust is heated up.**
- c) **NOTE: After starting motorcycle, it is normal for new exhaust system and muffler to emit smoke until oil residue burns off.**