



YOSHIMURA

RESEARCH & DEVELOPMENT OF AMERICA, INC.

5420 DANIELS STREET STE A, CHINO CA, 91710 · (800)634-9166 · (909)628-4722 · FACSIMILE (909)591-2198

www.yoshimura-rd.com

OFF-ROAD PERFORMANCE EXHAUST SYSTEM

**2008
Can-Am
DS450**

2515167

TITANIUM FULL SYSTEM WITH TITANIUM SLEEVE



THIS PRODUCT IS DESIGNED FOR USE IN CLOSED COURSE RACING AND IS NOT INTENDED FOR ANY OTHER USE.



CAUTION: The muffler packing on this system **MUST** be replaced every 8-10 hours of use, or every 1-2 motos. Failure to follow recommended muffler re-packing interval can cause muffler damage and may void the warranty.



NOTE: IN THE STATE OF CALIFORNIA, IT IS ILLEGAL TO MODIFY THE EMISSION CONTROL SYSTEM. WHICH INCLUDES THE FUEL INJECTION OF ANY VEHICLE.

Caution: Exhaust system may be extremely hot. Let motorcycle cool down before beginning installation.

Note: Read through all instructions before beginning installation.

Tools Needed:

Metric Socket Set
Metric Combination Wrench Set
11mm (7/16") Deep Socket
Ratchet Wrench and Extension
Torque Wrench
T-40 Torx Bit

Installation Steps:

- 1 Unbolt and remove stock exhaust system.
- 2 Install new stock exhaust port gasket (not supplied), Yoshimura manifold, and Yoshimura flange using the three stock header nuts.
- 3 Torque stock header nuts to 1.1 kg-m (8.0 lb-ft).
- 4 Install Yoshimura header into Yoshimura manifold and connect using the two supplied exhaust springs.
- 5 Install Yoshimura heatshield onto Yoshimura header using the supplied heatshield bolts.
- 6 Install supplied rubber grommet into muffler mounting bracket. Install aluminum insert into rubber grommet. Make sure that the shoulder of the aluminum insert faces toward the frame as shown in the parts diagram on page 3.
- 7 Slip the supplied stainless steel exhaust clamp over Yoshimura tailpipe inlet and install tailpipe with muffler assembly onto Yoshimura header. The stock gasket is not used between the Yoshimura header and Yoshimura tailpipe.
- 8 Bolt tailpipe to chassis mount using both stock and supplied hardware (see Fig. 1 and parts diagram on page 3).
- 9 Mount muffler to stock muffler mount location using the stock and supplied hardware (see Fig. 2 and Fig. 3 and parts diagram on page 3).
- 10 Torque muffler mount and chassis mount bolt to 2.3 kg-m (16.5 lb-ft).
- 11 Torque exhaust clamp to 1.25 kg-m (9 lb-ft).
- 12 It is recommended that the muffler and tailpipe be wiped down with rubbing alcohol to remove oil and fingerprints. This will help prevent tarnishing of the finish after the exhaust is heated up.
- 13 Check for proper clearance between new exhaust system and rear suspension (i.e. tire, swing-arm, brake, etc). If any problem is found, please carefully follow through the installation steps again. If problem still persists, please call Yoshimura tech department at (800)634-9166.

NOTE: After starting engine, it is normal for a new exhaust system and muffler to emit smoke until oil residue burns off.

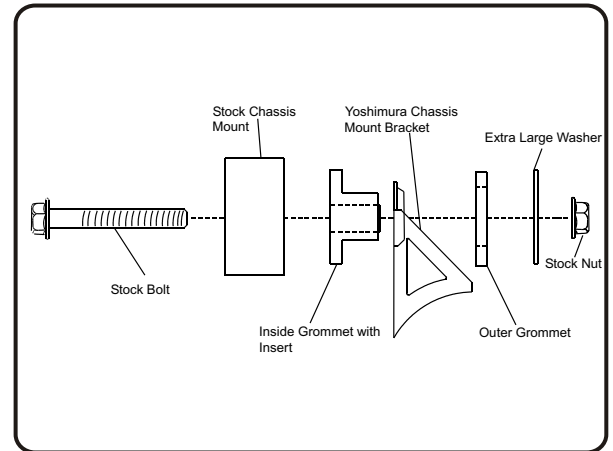


Fig. 1

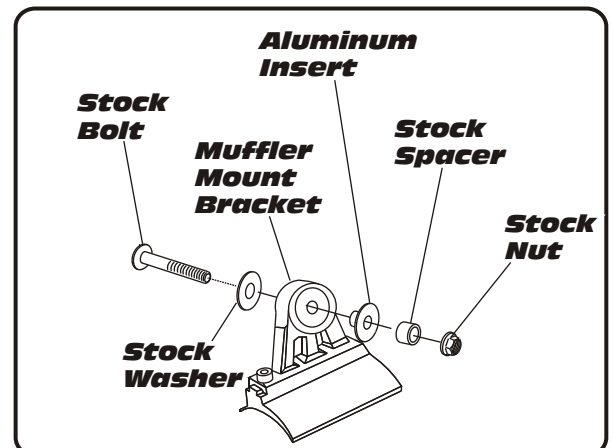


Fig. 2

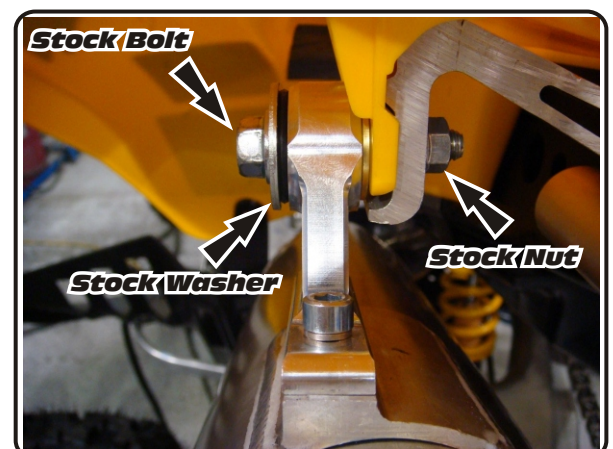
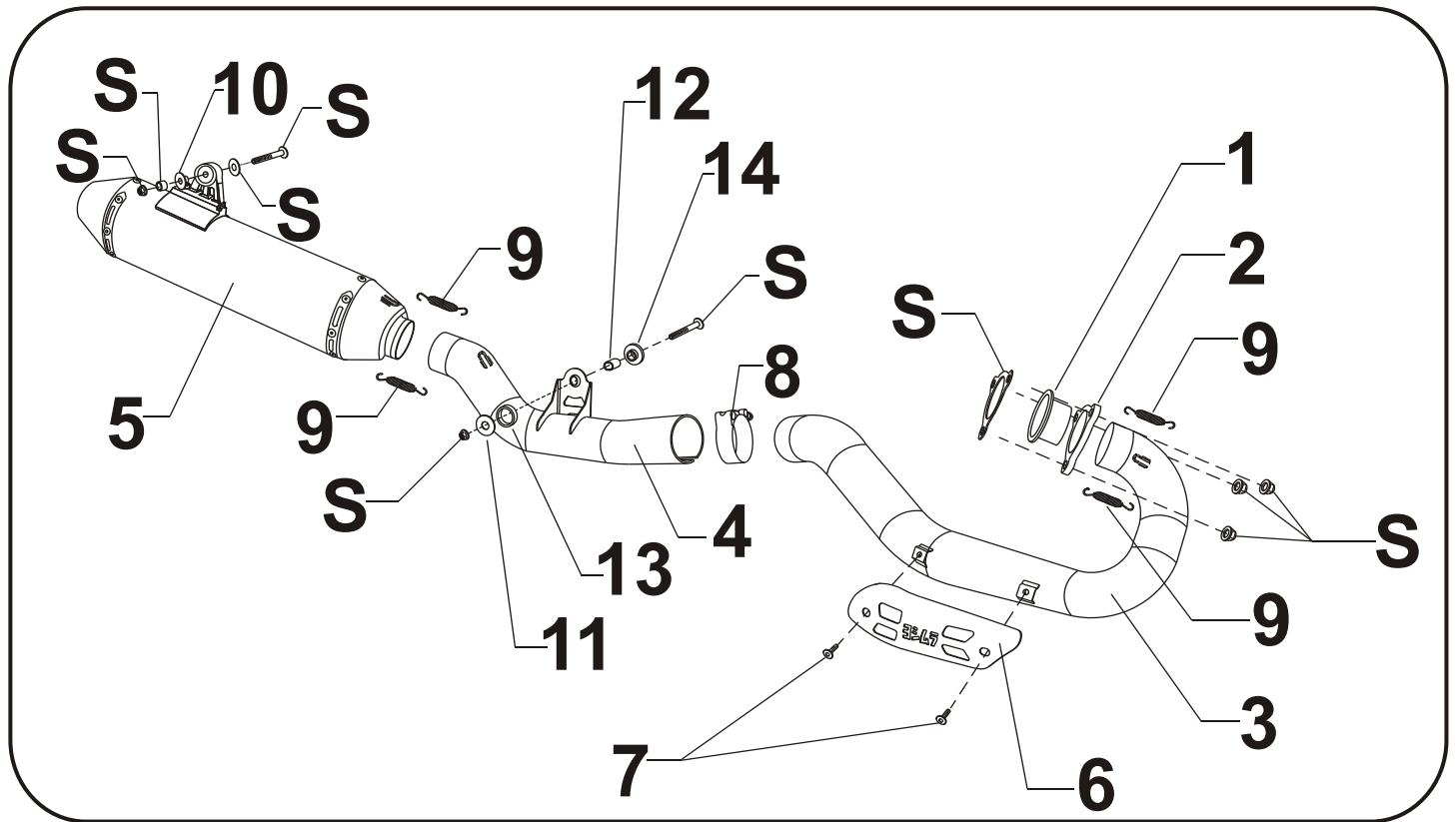


Fig. 3

#2515167



Parts Diagram

NO.	DESCRIPTION	QTY	PART #
1	Yoshimura Manifold	1	2515SDM
2	Yoshimura Flange	1	2515SDR
3	Yoshimura Titanium Header	1	2515-704
4	Yoshimura Titanium Tailpipe	1	2515-744
5	Yoshimura Muffler with Titanium Sleeve	1	2515167-RMA
6	Yoshimura Heatshield	1	1126-HS
7	Heatshield Mounting Bolts	2	RC116HSB
8	Exhaust Collector Clamp	1	20060
9	Medium Exhaust Springs	4	RACE-SPS-1
10	Aluminum Insert for Rubber Muffler Mount Grommet	1	ALS-001
11	Extra Large Washer	1	8X38WSH
12	Aluminum Insert for Rubber Chassis Mount Grommet	1	Z1031-SP
13	Large Rubber Chassis Mount Grommet 1	1	Z1030
14	Large Rubber Chassis Mount Grommet 2	1	Z1031
**	Rubber Muffler Mount Grommet	1	011257-00
**	Yoshimura Spring Puller Tool	1	ST-200
**	Yoshimura Vinyl Sticker	1	17029