



YOSHIMURA

RESEARCH&DEVELOPMENT OF AMERICA, INC.

5420 DANIELS STREET STE A, CHINO CA 91710 · (800)634-9166 · (909)628-4722 · FACSIMILE (909)591-2198

WWW.YOSHIMURA-RD.COM

OFF-ROAD PERFORMANCE EXHAUST SYSTEM

KTM

2011-12 350 SX-F

2011-12 350 EXC-F

263501D220

TITANIUM PRO RS4 FULL SYSTEM WITH CARBON FIBER SLEEVE

263501D720

TITANIUM PRO RS4 FULL SYSTEM WITH TITANIUM SLEEVE



THIS PRODUCT IS DESIGNED FOR USE IN CLOSED COURSE RACING AND IS NOT INTENDED FOR ANY OTHER USE.



CAUTION: The muffler packing on this system **MUST** be replaced every 6-8 hours of use, or after each moto. Failure to follow recommended muffler re-packing interval can cause muffler damage and may void the warranty.



NOTE: IN THE STATE OF CALIFORNIA, IT IS ILLEGAL TO MODIFY THE EMISSION CONTROL SYSTEM, WHICH INCLUDES THE CARBURETORS OF ANY VEHICLE.

CAUTION: Exhaust system can be extremely hot. Let motorcycle cool down before beginning installation. Always wear hand and eye protection and take precautionary measures to avoid injury.

WARNING: Always properly support vehicle with a stand and/or lift when servicing or performing any work. Unstable vehicles may present dangerous conditions and may cause property damage, personal injury and/or death.

Note: Read through all instructions before beginning installation.

Tools Needed:

Metric Socket Set
Ratchet Wrench and Extension
Torque Wrench
Spring Puller Tool

Installation Steps:

1. Stock exhaust removal.

- Follow owner's manual instructions to remove stock silencer.
- Follow owner's manual instructions to remove shock absorber from bike.
- Remove stock header from bike by removing stock springs securing header to header flange.
- Reinstall stock shock absorber following owner's manual instructions.

Note: Rear shock absorber may be reinstalled after header is removed, as the Yoshimura tailpipe is separated into two pieces.

Note: Stock header flange springs will be reused on the Yoshimura exhaust system.

2. Yoshimura full system installation.

- Install Yoshimura header onto stock manifold.
- Remove spring and tailpipe from muffler.
- Install Yoshimura tailpipe onto Yoshimura header and secure to frame mount using supplied hardware. Frame mount washer goes between frame and tailpipe. Do not tighten bolt or install springs at this time.
- Install Yoshimura rubber grommets and spacers onto muffler brackets. Install muffler onto Yoshimura tailpipe and secure using supplied hardware. Do not tighten bolts or install springs at this time.

e. Tighten tailpipe mount to 18.5 ft-lbs (25 N-m) and muffler mounts to 7.4 ft-lbs (10 N-m).

f. Install stock springs between header and flange, and supplied Yoshimura springs between header, tailpipe, and muffler.

- Before starting motorcycle, check for proper clearance between new exhaust system and rear suspension (i.e. tire, swing-arm, brake, rear shock, engine etc). If any problem is found, please carefully follow through the installation steps again. If problem still persists, please call Yoshimura Tech Department at (800) 634-9166 / in CA (909) 628-4722.

It is recommended that the muffler and tailpipe be wiped down with rubbing alcohol to remove oil and fingerprints. This will help prevent tarnishing of the finish after the exhaust is heated up.

NOTE: After starting motorcycle, it is normal for new exhaust system and muffler to emit smoke until oil residue burns off.

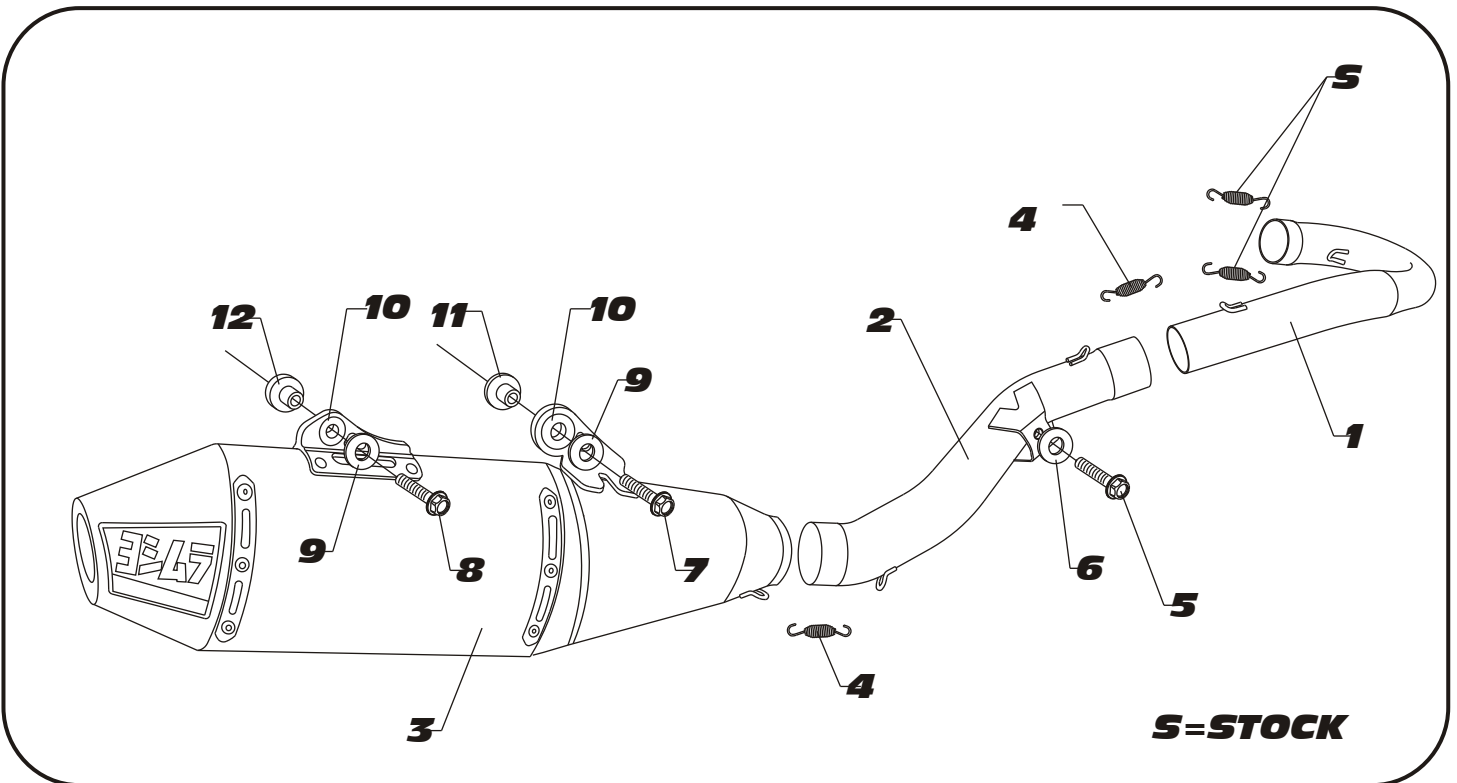
Fuel Injection Mapping:

For best results and to extract the most performance out of the Yoshimura system fuel injection mapping is recommended for closed course competition use only.

Yoshimura R&D offers the PIM2 Fuel Injection controller kit with optional DATA Box. Please contact your dealer or Yoshimura R&D for details.

Note: It is illegal to modify the fuel injection system of any vehicle in the State of California.

#263501D220, 720



Parts Diagram

NO.	DESCRIPTION	QTY	PART #
1	Yoshimura Titanium Header	1	26350-704
2	Yoshimura Titanium Tailpipe	1	26350-744
3	Yoshimura RS4 Muffler with Carbon Fiber Sleeve with Titanium Sleeve	1	263501D220-RMA 263501D270-RMA
4	Medium Exhaust Spring	2	RACE-SPS-1
5	8mm x 20mm Flanged Hex Head Bolt	1	M8X20H
6	8mm Flat Washer, Large	1	8MMWASHERL
7	6mm x 35mm Flanged Hex Head Bolt	1	M6X35H
8	6mm x 45mm Flanged Hex Head Bolt	1	M6X45H
9	6mm Flat Washer, XL	2	6MMWASHERXL
10	Rubber Grommet	2	Z1022
11	Aluminum Spacer	1	ALS-023
12	Aluminum Spacer	1	ALS-022
**	Offroad Endcap Plug	1	347PLUG
**	Spring Puller Tool	1	ST-200
**	Yoshimura Vinyl Sticker	1	17029

