



# SIGNATURE SERIES

## Qualified Manufacturer Declared "Replacement Part"

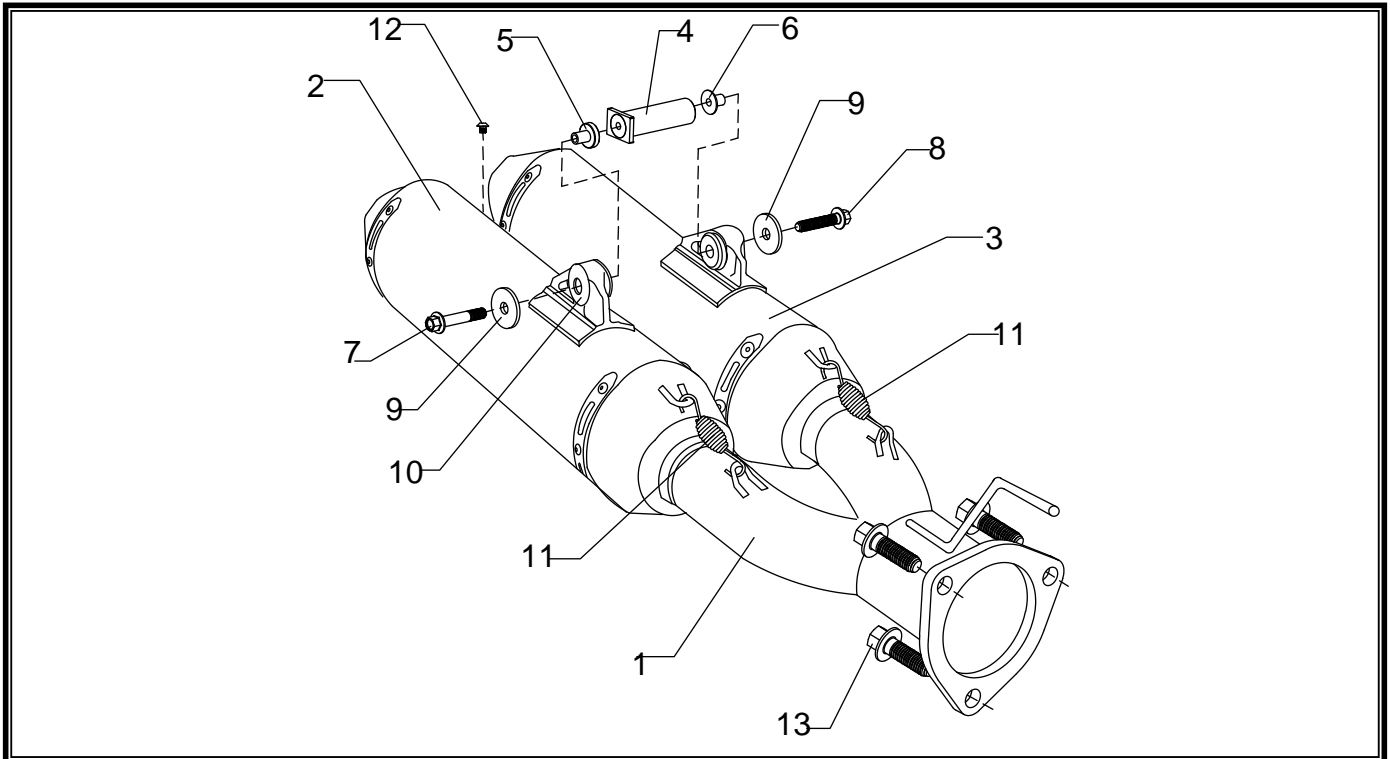
### APPLICATION

YEAR	MODEL
2012-2013	Kawasaki Teryx 4 750

### PRODUCT

347002F550	RS2D SS Slip-On Exhaust System with Stainless Steel Sleeve
------------	--

	In the state of California, it is illegal to modify the emission control system, which includes the fuel injection of any vehicle.
	You must know how to remove and replace your stock exhaust in order to install this product otherwise have it installed by a professional mechanic. Keep all stock parts from your existing system as some components may be necessary to install your new Yoshimura exhaust depending on the application.
	Read through all instructions before beginning installation. Exhaust system can be extremely hot. Let motorcycle cool down before beginning installation. Always wear hand and eye protection and take precautionary measures to avoid injury.



No.	Part #	Description	Qty
1	34700-152	Yoshimura Tailpipe	1
2	346000F552-RMA	Yoshimura Right Muffler Assembly	1
3	346000F552-LMA	Yoshimura Left Muffler Assembly	1
4	34700-BRKT	Muffler Hanger Bracket	1
5	ALS-033	Aluminum Spacer	1
6	ALS-001	Aluminum Spacer	1
7	M8X45H	8mm x 45mm Flanged Hex Head Bolt	1
8	M8X40H	8mm x 40mm Flanged Hex Head Bolt	1
9	8MMWASHERL	8mm Large Washer	1
10	011257-00	Rubber Bushing	2
11	RACE-SPX-1	Short Spring	4
12	M6X6BHS	6mm x 6mm Button Head Screw	1
13	M8X25H	8mm x 25mm Flanged Hex Bolt	3
**	M18X13PLG	O2 Bung Plug	1
**	347PLUG	Muffler Wash Plug	2
**	ST-200	Spring Puller Tool	1

***-TOOLS REQUIRED-***

*Metric Socket Set*

*Combination Wrench Set*

*Torque Wrench*

*Metric Allen Wrench Set*

***-REMOVAL-***

- 1. Remove the (3) stock nuts and washers securing stock muffler to header.***
- 2. Remove the rear stock muffler bracket bolt and muffler bracket.***
- 3. While securely supporting muffler, carefully slide stock muffler towards the rear of vehicle to remove.***  
***Note: The stock exhaust gasket will be re-used with the Yoshimura system. Inspect and replace if necessary.***

***-INSTALLATION-***

- 1. Install provided rubber grommets onto aluminum Yoshimura muffler bracket.***
- 2. Install aluminum spacers into Yoshimura Muffler Bracket according to the parts diagram.***  
***Note: Install thicker spacer onto right muffler bracket.***
- 3. Install provided M6X6BHS to the riveted muffler brackets toward the rear of Yoshimura muffler.***
- 4. Install Yoshimura slip-on by inserting hanger pin into frame. Secure using the stock exhaust gasket, nuts and washers and provided M8X25H bolts. Do not torque nuts and bolts at this time.***
- 5. Install provided muffler hanger bracket by sliding into notch on frame. See diagram for proper orientation.***
- 6. Secure muffler to muffler hanger bracket using the provided bolts and washers. See diagram for proper orientation.***
- 7. Torque stock header to Yoshimura tailpipe connection nuts and bolts to factory specification.***
- 8. Before starting vehicle, check for proper clearance between new exhaust system and rear suspension (i.e. tire, control arm, rear shock, engine, and etc.) If any problem is found, please carefully follow through the installation steps again. If problem still persists, please call Yoshimura Tech Department at (800) 634-9166 / in CA (909) 628-4722.***
- 9. It is recommended that the muffler and tailpipe be wiped down with rubbing alcohol to remove oil and fingerprints. This will help prevent tarnishing of the finish after the exhaust is heated up.***  
***NOTE: After starting vehicle, it is normal for new exhaust system and muffler to emit smoke until oil residue burns off.***