



YOSHIMURA

RESEARCH&DEVELOPMENT OF AMERICA, INC.

5420 DANIELS STREET STE A, CHINO CALIF. 91710 · (800)634-9166 · (909)628-4722 · FACSIMILE (909)591-2198

www.yoshimura-rd.com

EMS Cube Accessories ***GEAR POSITION SENSOR HARNESS***

SUZUKI

37100K

EMS Cube Gear Position Sensor Harness



Note: Read through all instructions before beginning installation.

Installation Steps:

- 1 Remove seat and open rear storage compartment.***
- 2 Remove fuel tank mounting bolts near steering head and tilt fuel tank back.***
- 3 Locate the stock GP coupler on the left side of the motorcycle underneath gas tank. The colors of the attached wires are pink, blue, and black/white(See Fig. 1).***
- 4 Unplug the stock GP coupler and install the Yoshimura GP harness.***

NOTE: IN THE STATE OF CALIFORNIA, IT IS ILLEGAL TO MODIFY THE EMISSION CONTROL SYSTEM. WHICH INCLUDES THE CARBURETORS OF ANY VEHICLE.

- 5 Route EMS Cube Gear Position Sensor harness securely and away from moving parts. Run the harness underneath gas tank, towards the storage compartment.
- 6 Secure harness with supplied zip tie.
- 7 Plug EMS GPS harness into EMS Cube (See Fig. 2).
- 8 Check that all wiring connections are tight. Reinstall fuel tank and seat. Check that wiring is not pinched or kinked.
- 9 Calibrate EMS Cube Gear Position by using Yoshimura Engine Management System interface. This command allows the user to calibrate the EMS software to the Gear Position sensor on the bike (if so equipped). Make sure that EMS Cube is connected with the computer. Open the Yoshimura software interface program. Click on "Command", "Calibration...". (See Fig.3) With the ignition ON, go through all gears one by one and press corresponding button. "Read All" button will reveal stored values. Close Calibration window. Now, go through all gears once again. The green dot should move to correct gear number (See Fig. 4). If not, check all wiring connections and try again.
- 10 If any problem is found, please carefully follow through the installation steps again. If problem still persists, please call Yoshimura technical department at (800)634-9166.

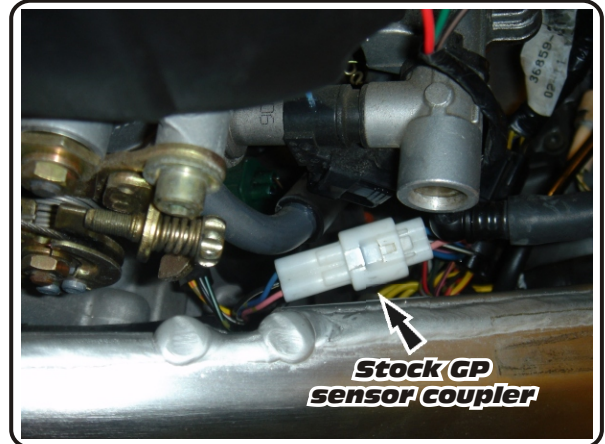


Fig. 1



Fig. 2

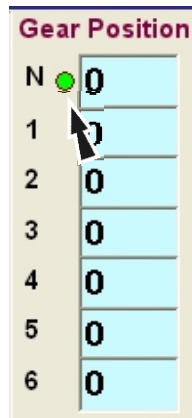


Fig. 4

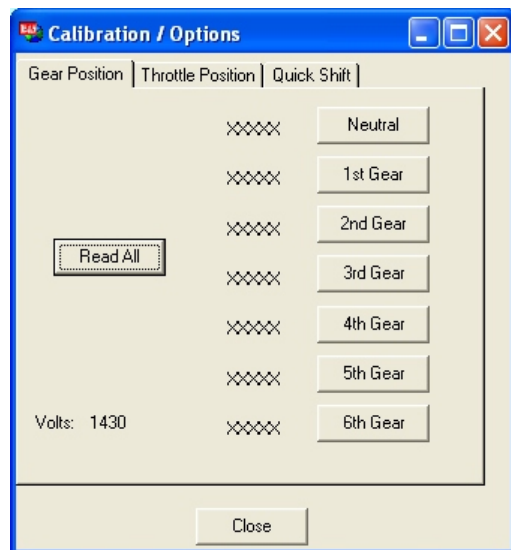


Fig. 3

Parts list:

DESCRIPTION	QTY	PART #
EMS Cube Gear Position Sensor Harness	1	37100
Zip Tie Black	2	ZT-200
Instructions	1	INST KIT