



YOSHIMURA

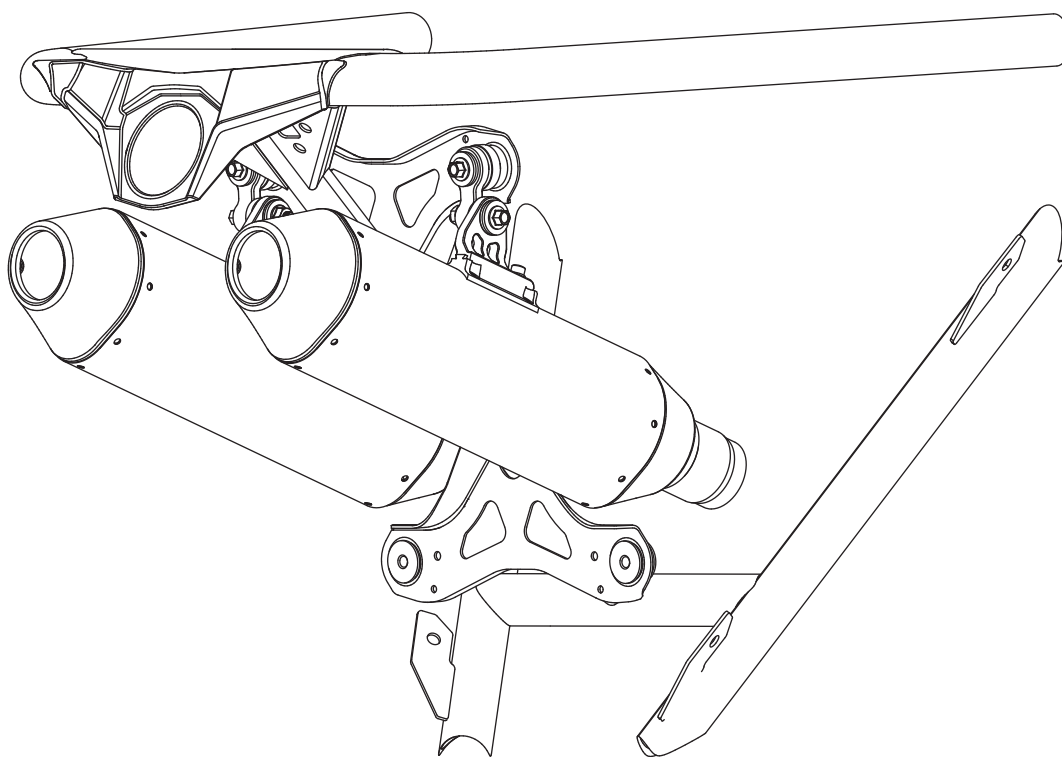
RESEARCH&DEVELOPMENT OF AMERICA, INC.

5420 DANIELS STREET STE A, CHINO CA., 91710 · (800)634-9166 · (909)628-4722 · FACSIMILE (909)591-2198

www.yoshimura-rd.com

PERFORMANCE EXHAUST SYSTEM **Can-Am Maverick**

391502F550 **RS2D Slip-On Exhaust System**



THIS PRODUCT IS DESIGNED FOR USE IN CLOSED COURSE RACING AND IS NOT INTENDED FOR ANY OTHER USE.

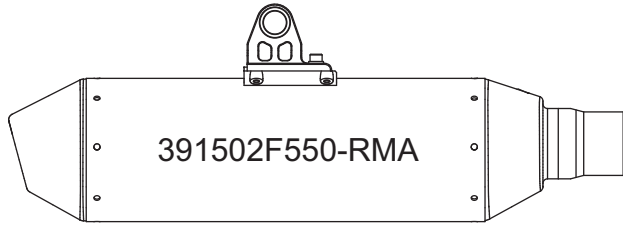


To maintain maximum sound and engine performance, the muffler packing may need to be replaced at some time during the muffler's life. Failure to maintain the muffler packing may cause damage to the muffler and/or void the warranty. Regularly inspect the muffler body for discoloration, cracks, rattling, or other signs of wear caused by depleted muffler packing. If muffler packing is determined to be depleted or worn, a muffler re-pack kit is highly recommended to restore the muffler to optimum performance. Spark arrestor and muffler inspections should be performed at the same time.

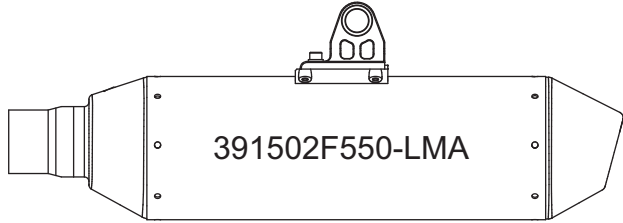


NOTE: IN THE STATE OF CALIFORNIA, IT IS ILLEGAL TO MODIFY THE EMISSION CONTROL SYSTEM, WHICH INCLUDES THE CARBURETORS OF ANY VEHICLE.

HARDWARE KIT COMPONENTS

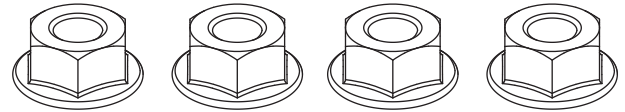


391502F550-RMA

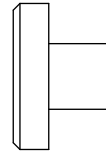


391502F550-LMA

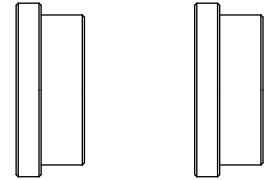
Left and Right Muffler Assembly



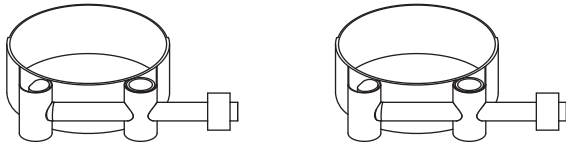
8MMNUT
8mm Flange Nut



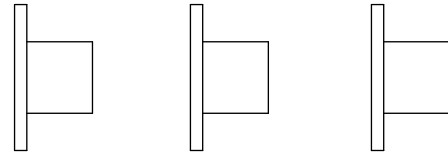
ALS-002
Aluminum Spacer



ALS-045
Aluminum Spacer



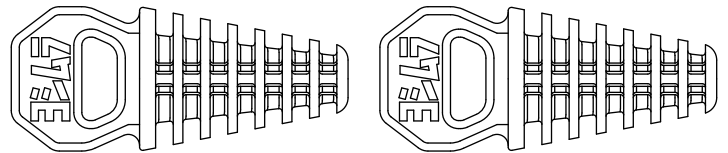
20062
Exhaust Clamp



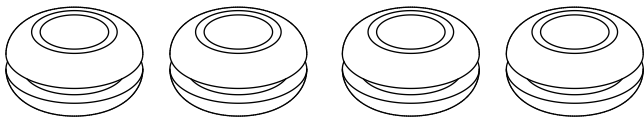
ALS-003
Aluminum Spacer



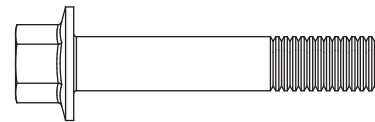
8MMWASHERL
8mm Large Washer



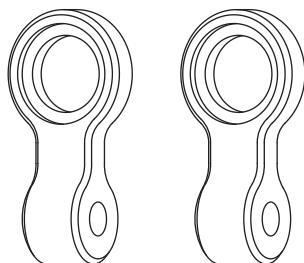
347PLUG
Muffer Wash Plugs



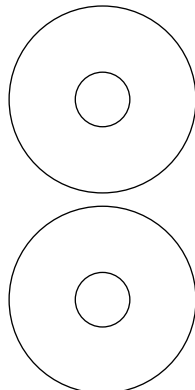
Z1022
Rubber Grommet



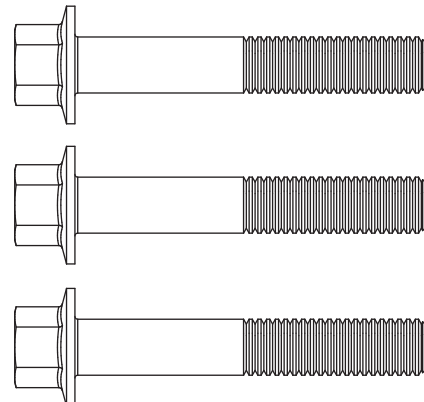
M8X45H
8mm x 45mm Flanged Hex Head Bolt



39900-RS4BRKT
Muffler Hanger Bracket



8MMWASHERXL
8mm XL Washer



M8X50H
8mm x 50mm Flanged Hex Head Bolt

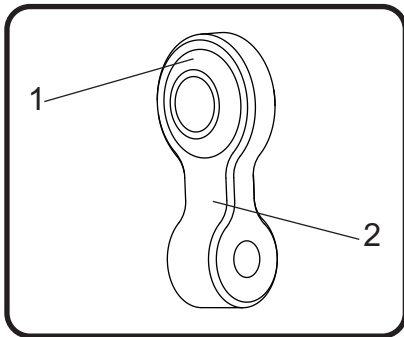
Removal

1. Loosen and remove the two muffler clamps securing muffler to exhaust pipes.
2. Unhook muffler supports and remove muffler.
3. Remove the (2) upper rubber muffler support inserts from the frame.

Note: The lower mounts will not be used with the Yoshimura slip-on exhaust system.

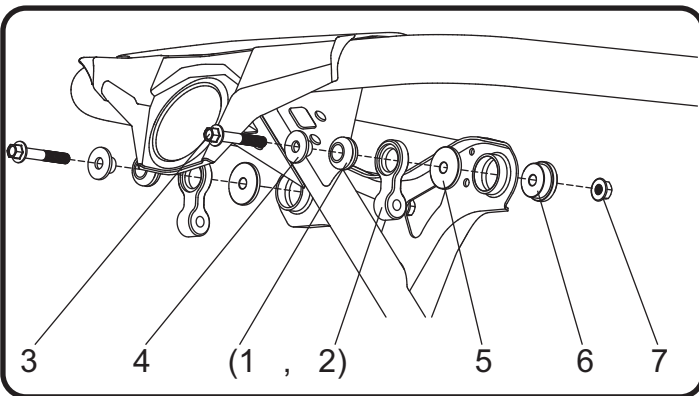
Installation

1. Install (1) Z1022 rubber grommet into both (2) 39900-RS4BRKT muffler hanger bracket.

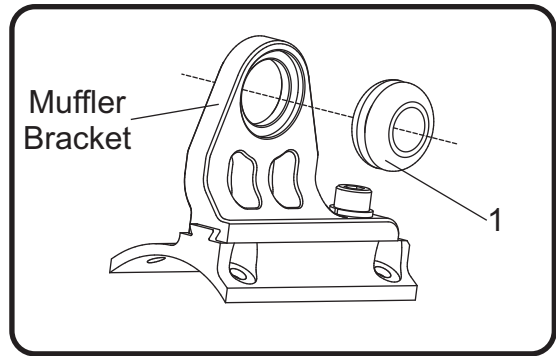


2. Install (1,2) 39900-RS4BRKT muffler hanger bracket as shown in the diagram. Orientation is as follows: (3) M8X50H bolt, (4) ALS-003 aluminum spacer, (1,2) 39900-RS4BRKT muffler hanger bracket, (5) 8MMWASHERXL washer, (6) ALS-045 aluminum spacer, (7) 8MMNUT nut.

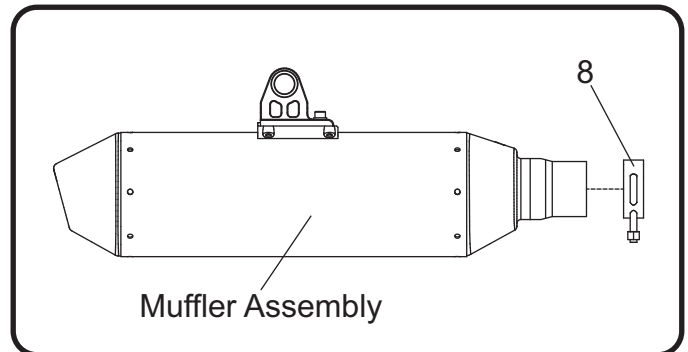
Torque bolt to 23Nm (2.3 kg-m, 17 ft-lb).



3. Install (1) Z1022 rubber grommets into left and right muffler brackets.

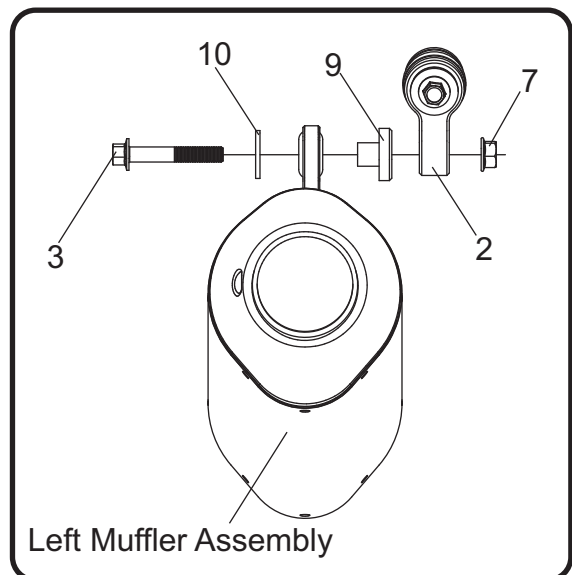


4. Slide (8) 20060 exhaust clamp over left and right muffler assembly tailpipe.



5. Install left muffler assembly by sliding over the stock header outlet. Secure left muffler assembly as shown in the diagram. Orientation is as follows: (3) M8X50H bolt, (10) 8MMWASHERL washer, Left Muffler Assembly, (9) ALS-002 aluminum spacer, (2) 39900-RS4BRKT muffler hanger bracket, (7) 8MMNUT nut.

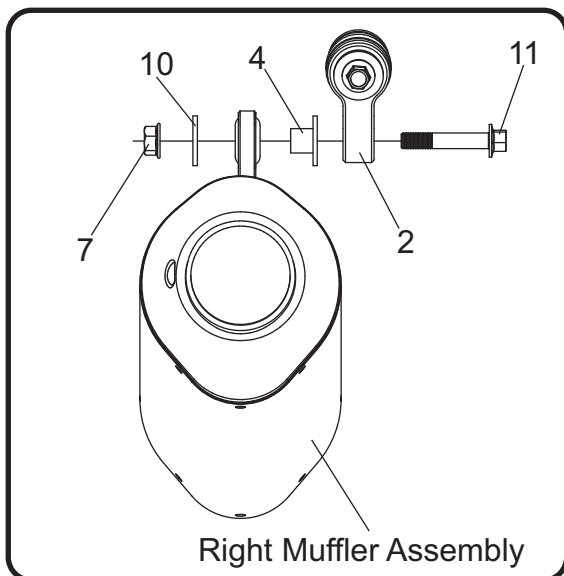
Torque bolt to 23Nm (2.3 kg-m, 17 ft-lb).



6. Install right muffler assembly by sliding over the stock header outlet. Secure right muffler assembly as shown in the diagram. Orientation is as follows:

(7) 8MMNUT nut, (10) 8MMWASHERL washer, Right Muffler Assembly, (4) ALS-003 aluminum spacer, (2) 39900-RS4BRKT muffler hanger bracket, (11) M8x45H bolt.

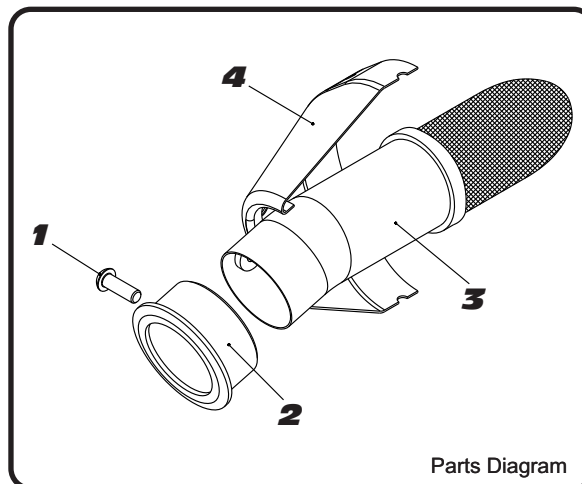
Torque bolt to 23Nm (2.3 kg-m, 17 ft-lb).



7. Torque left and right exhaust clamps to 10Nm (1.0 kg-m, 8 ft-lb).
8. Before starting vehicle, check for proper clearance between new exhaust system and rear suspension (i.e. tire, control arm, brakes, rear shock, and etc.) If any problem is found, please carefully follow through the installation steps again. If problem still persists, please call Yoshimura Tech Department at (800) 634-9166 / in CA (909) 628-4722.
9. It is recommended that the muffler and tailpipe be wiped down with rubbing alcohol to remove oil and fingerprints. This will help prevent tarnishing of the finish after the exhaust is heated up.

Note: After starting vehicle, it is normal for new exhaust system and muffler to emit smoke until oil residue burns off.

Spark Arrestor Maintenance



NO.	DESCRIPTION	QTY	PART #
1	6mm X 18mm Button Head Cap Screw	1	M6X18BHS
2	RS2 Ring 1.625"	1	DS4-RING-1625
3	TEC-SD12 Spark Arrester	1	TEC-SD12
4	Yoshimura Exhaust	**	**

- 1 Using a 4mm Allen key, remove the bolt that secures the aluminum ring and spark arrester to the muffler (see Parts Diagram for location).
- 2 Remove the spark arrester from the muffler.
- 3 Using a wire brush, remove carbon deposits from spark arrester screen. Inspect the screen for excessive wear or damage. If spark arrester is excessively worn or damaged, the spark arrester must be replaced. Cleaning and inspection should be performed after every 60 hours of use.

CAUTION: Gloves and safety glasses should be worn while cleaning spark arrester.
- 4 Re-install spark arrester and aluminum ring. Torque the spark arrester securing bolt to 1.0 kg-m (7.3 lb-ft).
NOTE: It is recommended that a low strength "Loc-tite" is used on the spark arrester securing bolt.

Optional Replacement Parts

Spark Arrester	SA-06-K
Re-pack Kit	REPACK-RS2-PK15