

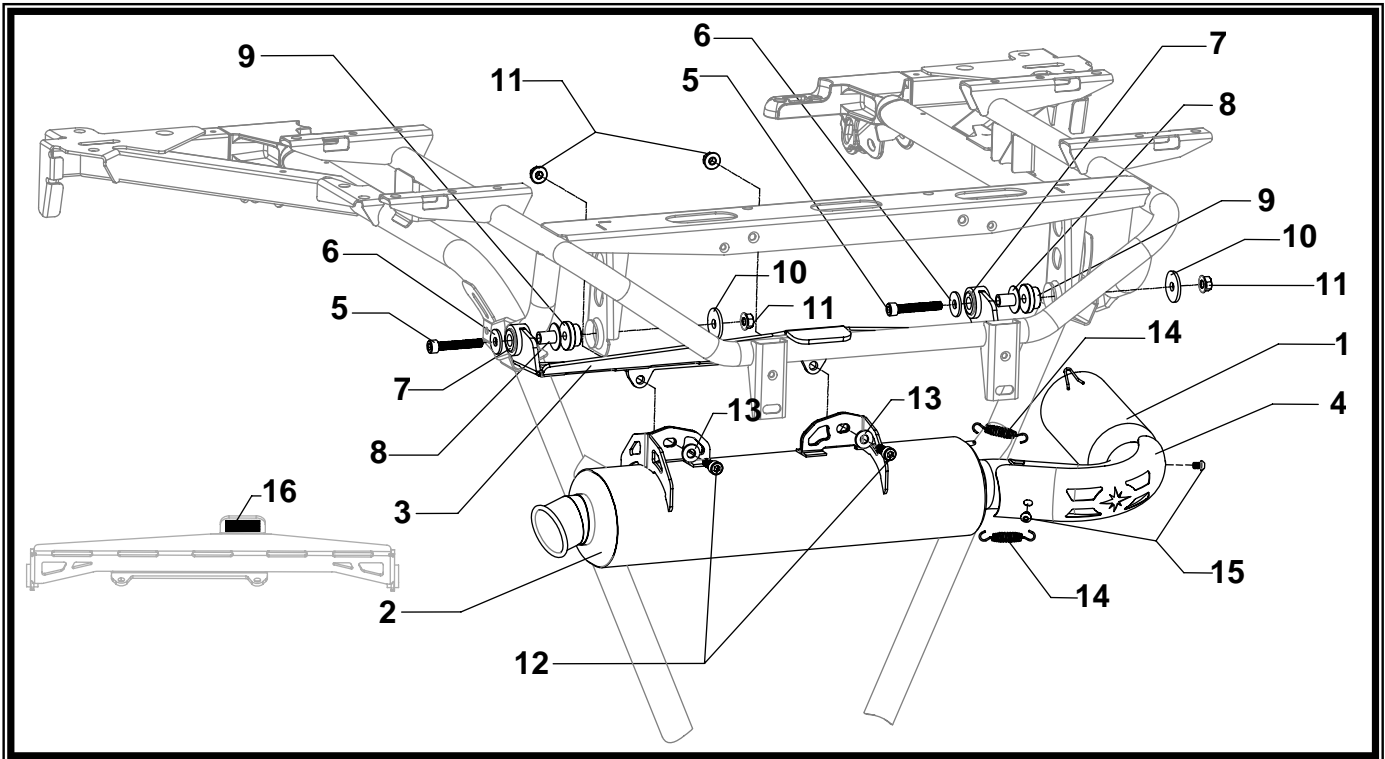


PERFORMANCE EXHAUST SYSTEM

APPLICATION

YEAR	MODEL
2011	Polaris RZR XP900
PRODUCT	
39900U5500	RZR XP900 Slip-On Exhaust System

- This product is designed for use in closed course racing and is not intended for highway use. In the state of California, it is illegal to modify the emission control system, which includes the fuel injection of any vehicle.
- You must know how to remove and replace your stock exhaust in order to install this product otherwise have it installed by a professional mechanic. Keep all stock parts from your existing system as some components may be necessary to install your new Polaris exhaust depending on the application.
- Read through all instructions before beginning installation. Exhaust system can be extremely hot. Let vehicle cool down before beginning installation. Always wear hand and eye protection and take precautionary measures to avoid injury.



No.	Part #	Description	Qty
1	39900-152	Polaris Tailpipe	1
2	39900U550-RMA	Polaris Muffler Assy.	1
3	39900-BRKT	Chassis Mount Muffler Bracket	1
4	39900-HS	Polaris Heatshield	1
5	M8X50	8mm x 50mm Socket Head Cap Screw	2
6	8MMWASHERL	8mm Large Washer	2
7	011257-00	Rubber Bushing	2
8	ALS-001	Aluminum Spacer	2

9	ALS-027	Aluminum Spacer	2
10	8MMWASHERXL	8mm XL Washer	2
11	8MMNUT	8mm Flange Nut	4
12	M8X20	8mm x 20mm Socket Head Cap Screw	2
13	8MMWASHER	8mm Washer	2
14	RACE-SPX-1	Short Spring	2
15	RC116HSB	6mm x 8mm Button Head Cap Screw	2
16	39900-RS	Rubber Pad	1
**	ST-200	Spring Puller	1

-TOOLS REQUIRED-

Metric Socket Set

Combination Wrench Set

Metric Allen Wrench Set

-REMOVAL-

1. *Removing the stock muffler.*

- a) **Remove the (4) springs off of the stock tailpipe and the muffler connections.**
- b) **Slide muffler to the side to remove.**
- c) **Remove the stock rubber bushings in the frame as they will not be used with the new exhaust system.**
- d) **Inspect stock exhaust gasket and replace if necessary. (Polaris P/N: 3610178)**

-INSTALLATION-

1. *Small parts installation.*

- a) **Install provided adhesive rubber pad on the bottom of the chassis mount muffler bracket tab.**
- b) **Install heatshield onto tailpipe using the (2) screws provided in the kit.**
- c) **Install rubber bushings onto chassis mount muffler bracket.**
- d) **Install chassis mount muffler bracket onto frame using the hardware provided in the kit. (See diagram for orientation.)**

2. *Installing the muffler tailpipe assembly.*

- a) **Install muffler assembly using the stock exhaust springs.**
- b) **Secure muffler to chassis mount muffler bracket using the hardware provided in the kit.**

3. *Fitment check and Notes.*

- a) **Before starting vehicle, check for proper clearance between new exhaust system and rear suspension (i.e. tire, control arm, brake, rear shock, engine, and etc.) If any problem is found, please carefully follow through the installation steps again. If problem still persists, please contact your dealer or Polaris Technical Service Department.**
- b) **It is recommended that the muffler and tailpipe be wiped down with rubbing alcohol to remove oil and fingerprints. This will help prevent tarnishing of the finish after the exhaust is heated up.**
- c) **NOTE: After starting vehicle, it is normal for new exhaust system and muffler to emit smoke until oil residue burns off.**

<i>Optional Replacement Parts</i>	<i>Description</i>
REPACK-RS3-25	Re-pack Kit
SA-05-K	Spark Arrestor Kit



CAUTION: To maintain maximum sound and engine performance the muffler packing may need to be replaced at some time during the muffler's life. Failure to maintain the muffler packing may cause damage to the muffler and/or void the warranty. Regularly inspect the muffler body for discoloration, cracks, rattling, or other signs of wear caused by depleted muffler packing. If muffler packing is determined to be depleted or worn, a muffler re-pack kit is highly recommended to restore the muffler to optimum performance. Spark arrestor and muffler inspections should be performed at same time.

