



YOSHIMURA
RESEARCH AND DEVELOPMENT OF AMERICA, INC.

YOSHIMURA PIM II

(EMS Peripheral Interface Module)

APPLICATION

YEAR	MODEL
2011-2012	Polaris RZR800/S/4

PRODUCT

600XX394011	PIM2 Fuel Injection Controller Kit
-------------	------------------------------------



This product is designed for use in closed course racing and is not intended for highway use.



Read through all instructions before beginning installation.



Areas of vehicle may be extremely hot. Let vehicle cool down before beginning installation. Always wear hand and eye protection and take precautionary measures to avoid injury or damage.

NOTE:

In the state of California, it is illegal to modify the emission control system, which includes the fuel injection of any vehicle for on- or off-highway vehicles.

TOOLS REQUIRED

Metric Socket Set
Screwdriver

-INSTALLATION-

1. Remove driver side seat as per factory service or owner's manual.
 - 1a. For 4 model, remove driver side rear seat as per factory service or owners manual.
2. Disconnect the battery.
3. Install PIM 2 bracket above battery. Apply provided hook-and-loop adhesive to PIM 2 unit and insert into bracket.

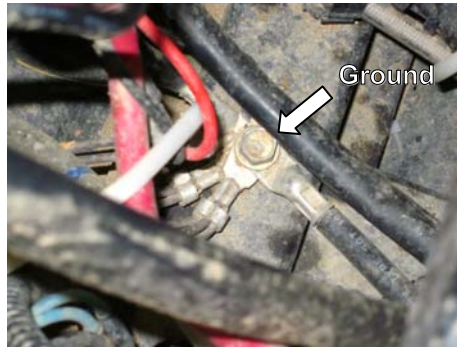


- 3a. For 4 model, install PIM 2 bracket onto left panel beneath driver side rear seat using the provided hardware. Apply provided hook-and-loop adhesive to PIM 2 unit and insert into bracket.

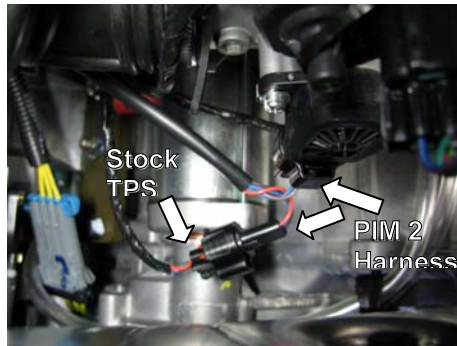


4. Connect PIM 2 harness to PIM 2 unit and route harness towards the rear of the vehicle.

5. Locate ground bolt on chassis and ground PIM 2 harness ground wire.



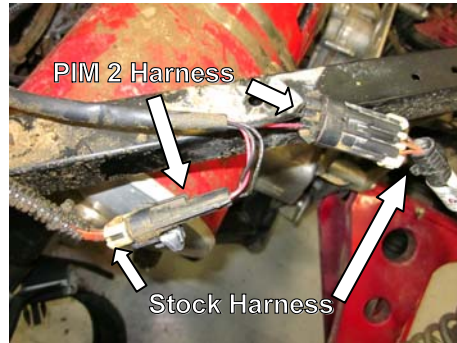
6. Locate the Throttle Position Sensor (TPS) above the clutch cooling shroud and disconnect the stock TPS connector and connect the PIM 2 harness in-line with the TPS and stock connector.



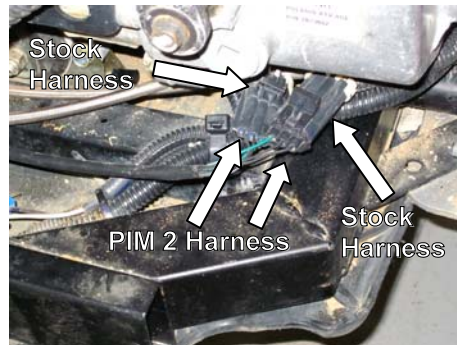
7. Locate the (2) Fuel Injector connectors next to ignition coil in front of the air cleaner. Disconnect the stock Fuel Injector connectors and connect the PIM 2 harness in-line with the stock connectors.
(Note: Plug pink wires to cyl. 1 and red wires to cyl. 2)



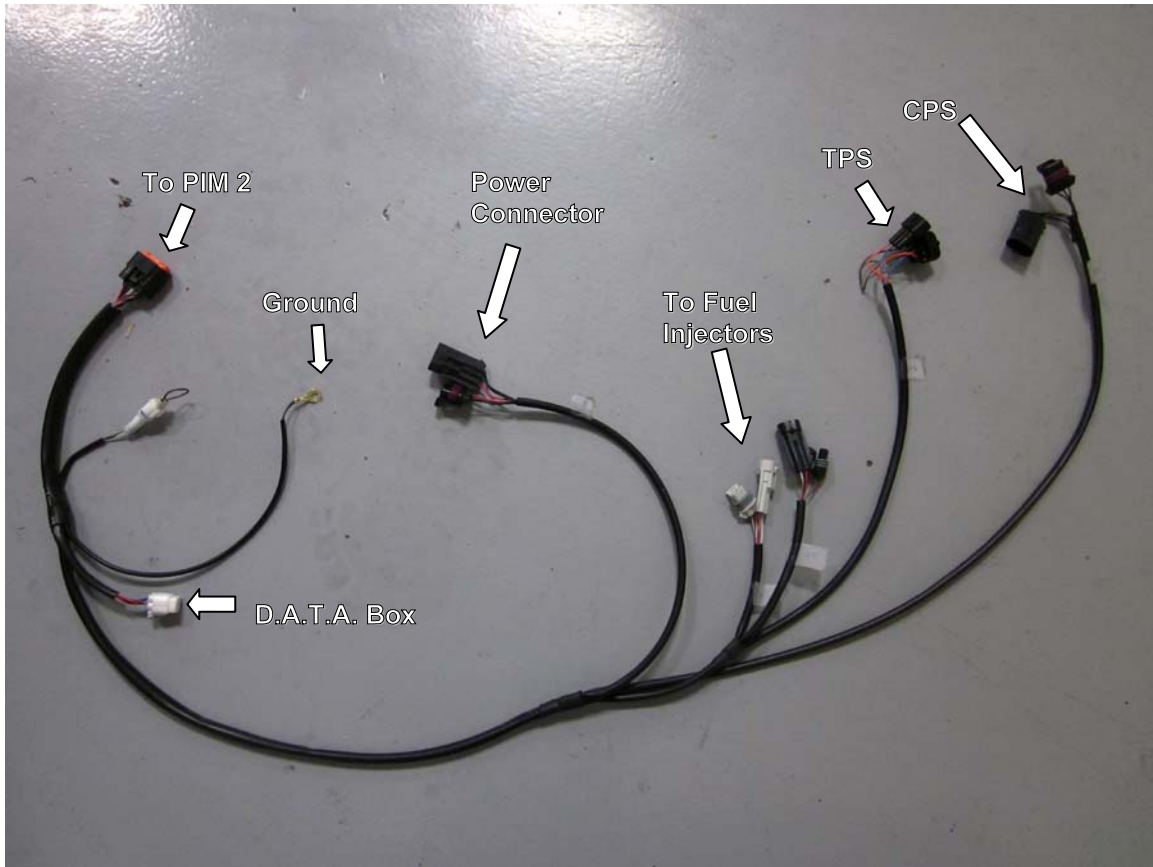
8. *Locate the tail light harness near the rear of the vehicle. Disconnect the factory tail light connector and install the PIM 2 power connector in-line with the stock tail light connector.*



9. *Locate the Crank Position Sensor (CPS) on left rear of the frame underneath the transmission. Disconnect the stock CPS connector and connect the PIM 2 harness in-line with the stock connector.*



10. *Re-connect battery and re-install drivers seat as per factory service or owner's manual.*
- 10a. *Re-connect battery and re-install diver side rear seat as per factory service or owners manual.*



DESCRIPTION	QTY	PART #
<i>PIM2 Unit</i>	1	R-433B
<i>PIM2 Harness for Polaris RZR</i>	1	600XX394010HB
<i>PIM2 Bracket for Polaris RZR</i>	1	R-433-2415-BRKT
<i>Installation CD</i>	1	R-433-CD
<i>USB Communication Cable</i>	1	R-433-USB
<i>Zip Ties</i>	8	ZT-300
<i>Hook-and-Loop Adhesive</i>	1	5000-V
<i>"Comp Use Only" Sticker</i>	1	17012
<i>Yoshimura Sticker Sheet</i>	1	17029
<i>Used on RZR800 4 Model Only</i>		
<i>PIM2 Bracket for Polaris RZR</i>	1	R-433-2505-BRKT
<i>6mm Large Flat Washer</i>	2	6MMWASHERL
<i>6mm Nylon Lock Nut</i>	2	6MMLN
<i>6mm x 14mm Flanged Hex Bolt</i>	2	M6X14H-F