



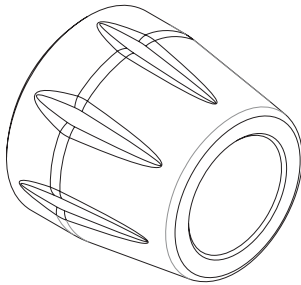
# YOSHIMURA

RESEARCH&DEVELOPMENT OF AMERICA, INC.

5420 DANIELS STREET STE A, CHINO CALIF. 91710 · (800)634-9166 · (909)628-4722 · FACSIMILE (909)591-2198

[www.yoshimura-rd.com](http://www.yoshimura-rd.com)

| NO. | DESCRIPTION              | QTY | PART #   |
|-----|--------------------------|-----|----------|
| 1   | Yoshimura Bar End        | 2   | RK3731   |
| **  | Yoshimura Sticker        | 2   | 17020C   |
| **  | Installation Instruction | 1   | INST KIT |



### **Installation Instructions**

1. Remove stock bar end weights
2. Install Yoshimura bar ends. Torque to 48 ft-lbs (66 N-m).



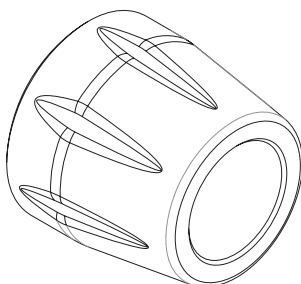
# YOSHIMURA

RESEARCH&DEVELOPMENT OF AMERICA, INC.

5420 DANIELS STREET STE A, CHINO CALIF. 91710 · (800)634-9166 · (909)628-4722 · FACSIMILE (909)591-2198

[www.yoshimura-rd.com](http://www.yoshimura-rd.com)

| NO. | DESCRIPTION              | QTY | PART #   |
|-----|--------------------------|-----|----------|
| 1   | Yoshimura Bar End        | 2   | RK3731   |
| **  | Yoshimura Sticker        | 2   | 17020C   |
| **  | Installation Instruction | 1   | INST KIT |



### **Installation Instructions**

1. Remove stock bar end weights
2. Install Yoshimura bar ends. Torque to 48 ft-lbs (66 N-m).