



RESEARCH&DEVELOPMENT OF AMERICA, INC.

5420 DANIELS STREET STE A, CHINO CALIF. 91710 · (800)634-9166 · (909)628-4722 · FACSIMILE (909)591-2198

[www.yoshimura-rd.com](http://www.yoshimura-rd.com)

**R-K5710-K** 2010-2014 BMW S1000RR Timing Inspection Plug



| NO. | DESCRIPTION            | QTY | PART #  |
|-----|------------------------|-----|---------|
| 1   | Timing Inspection Plug | 1   | R-K5710 |

**Instructions:**

1. Remove stock timing inspection plug.
2. Remove stock rubber o-ring from timing inspection plug and install on Yoshimura timing inspection plug.
3. Install Yoshimura timing inspection plug.  
Torque to 7.4 lb-ft (10 Nm).

If safety wire is required, loop safety wire through the holed drilled in the plug to optional case saver kit or to secure location.



RESEARCH&DEVELOPMENT OF AMERICA, INC.

5420 DANIELS STREET STE A, CHINO CALIF. 91710 · (800)634-9166 · (909)628-4722 · FACSIMILE (909)591-2198

[www.yoshimura-rd.com](http://www.yoshimura-rd.com)

**R-K5710-K** 2010-2014 BMW S1000RR Timing Inspection Plug



| NO. | DESCRIPTION            | QTY | PART #  |
|-----|------------------------|-----|---------|
| 1   | Timing Inspection Plug | 1   | R-K5710 |

**Instructions:**

1. Remove stock timing inspection plug.
2. Remove stock rubber o-ring from timing inspection plug and install on Yoshimura timing inspection plug.
3. Install Yoshimura timing inspection plug.  
Torque to 7.4 lb-ft (10 Nm).

If safety wire is required, loop safety wire through the holed drilled in the plug to optional case saver kit or to secure location.



RESEARCH&DEVELOPMENT OF AMERICA, INC.

5420 DANIELS STREET STE A, CHINO CALIF. 91710 · (800)634-9166 · (909)628-4722 · FACSIMILE (909)591-2198

[www.yoshimura-rd.com](http://www.yoshimura-rd.com)

**R-K5710-K** 2010-2014BMW S1000RR Timing Inspection Plug



| NO. | DESCRIPTION            | QTY | PART #  |
|-----|------------------------|-----|---------|
| 1   | Timing Inspection Plug | 1   | R-K5710 |

**Instructions:**

1. Remove stock timing inspection plug.
2. Remove stock rubber o-ring from timing inspection plug and install on Yoshimura timing inspection plug.
3. Install Yoshimura timing inspection plug.  
Torque to 7.4 lb-ft (10 Nm).

If safety wire is required, loop safety wire through the holed drilled in the plug to optional case saver kit or to secure location.

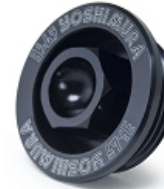


RESEARCH&DEVELOPMENT OF AMERICA, INC.

5420 DANIELS STREET STE A, CHINO CALIF. 91710 · (800)634-9166 · (909)628-4722 · FACSIMILE (909)591-2198

[www.yoshimura-rd.com](http://www.yoshimura-rd.com)

**R-K5710-K** 2010-2014 BMW S1000RR Timing Inspection Plug



| NO. | DESCRIPTION            | QTY | PART #  |
|-----|------------------------|-----|---------|
| 1   | Timing Inspection Plug | 1   | R-K5710 |

**Instructions:**

1. Remove stock timing inspection plug.
2. Remove stock rubber o-ring from timing inspection plug and install on Yoshimura timing inspection plug.
3. Install Yoshimura timing inspection plug.  
Torque to 7.4 lb-ft (10 Nm).

If safety wire is required, loop safety wire through the holed drilled in the plug to optional case saver kit or to secure location.