



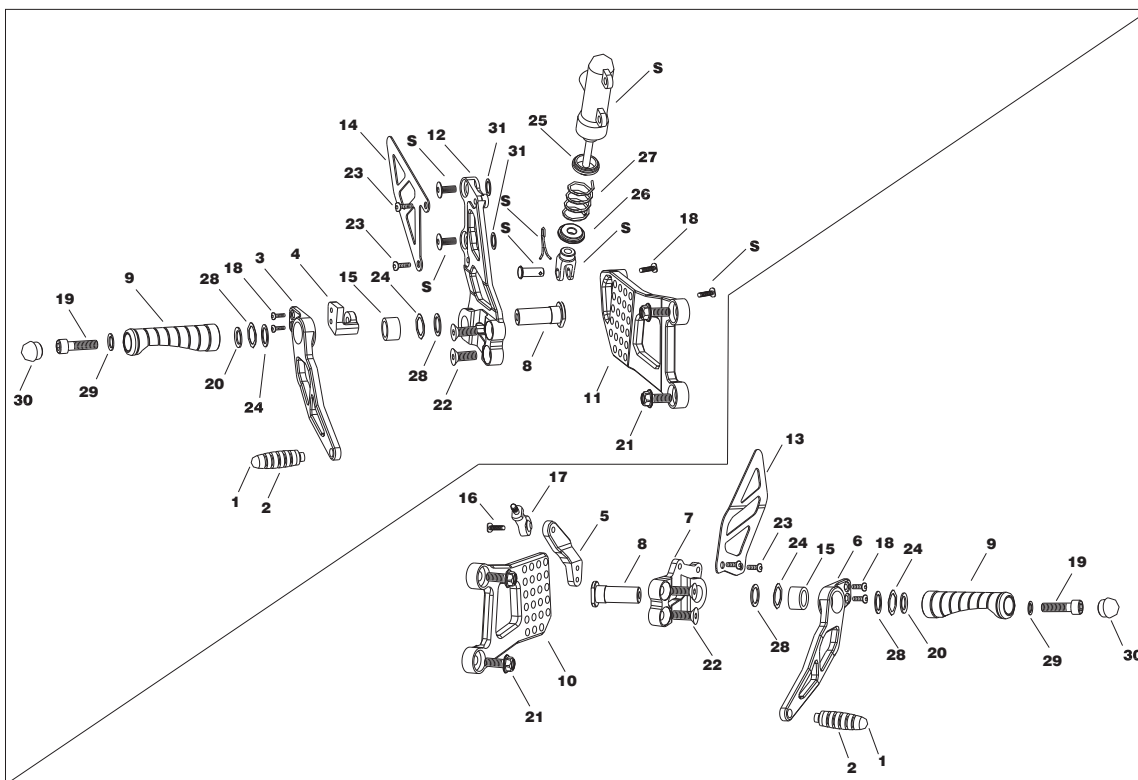
YOSHIMURA

RESEARCH&DEVELOPMENT OF AMERICA, INC.

5420 DANIELS STREET STE A, CHINO CA. 91710 · (800)634-9166 · (909)628-4722 · FACSIMILE (909)591-2198

www.yoshimura-rd.com

R-K885 ADJUSTABLE BILLET REAR SETS 2007-2008 YAMAHA R1



Parts Diagram

Part List:

NO.	DESCRIPTION	QTY	PART #
1	Pin pedal black	2	R-K812PS-B
2	Rubber Grommet	2	25652-16500
3	Brake Lever Arm	1	R-K885BLA
4	Brake Lever base	1	R-K885BLB
5	Shift Lever base	1	R-K885SLB
6	Shift Lever Arm	1	R-K885SLA
7	Left bracket black	1	R-K885LB
8	Pedal adapter L&R black	2	R-K816PA
9	Foot peg L&R black	2	R-K880PB
10	Adjustable left mount	1	R-K885LM
11	Adjustable right mount	1	R-K885RM
12	Right bracket black	1	R-K885RB
13	Left Heel guard	1	R-K885HGL
14	Right Heel guard	1	R-K885HGR
15	Bronze bushing 1/2" Dia	2	6391K251
16	6mm X 16mm Button head screws	1	M6X16BHS
17	Left hand thread heim joint MALE	1	POS6L

NO.	DESCRIPTION	QTY	PART #
18	5mm X 10mm Soc head cap screw	5	M5X10B
19	8mmX30mm Soc head cap screw	2	M8X30
20	8.5mm x 12.8 Ribbed Lock washer	2	8MMRLW
21	8mm X 20mm Flanged HEX head bolt	4	M8X20H
22	8mm X 20 Flat head HEX screw	4	M8X20FS
23	6mm X 10mm button head screw	4	M6X10BHS
24	0.65x0.855x0.01" Wave Spring Washer	4	WSH.650
25	Spring LCTR: RR Master Cyl, TOP	1	R-K8MST
26	Spring LCTR: RR Master Cyl, BTM	1	R-K8MSB
27	Brake Lever Return Spring.	1	R-K8RSP
28	Delrin Washer	4	DWASHER
29	10mm Serrated Lock Washer	2	10MMRLW
30	Delrin bumper	2	R-K880DB
31	6mm Washer	2	6MMWASHER
**	Thread lock blue 2ml tube	1	R-K880ND
**	Yoshimura USA Sticker	2	17020C

Caution: Engine and exhaust system can be extremely hot. Let motorcycle cool down before beginning installation.

Note: Read through all instructions before beginning installation.

Tools Needed:

Metric Socket Set, Extension, and Ratchet

Metric Open End Wrenches

Metric Allen Bits

Torque Wrench

Needle Nose Pliers

Installation Steps:

- 1 Remove stock left rear set.
- 2 Install Yoshimura left rear set (see Fig. 1 and Parts Diagram). Use supplied thread lock on the two bolts that secure the rear set to the chassis and torque these bolts to 2.5 kg-m (18 lb-ft).
- 3 Remove stock right rear set (exhaust midpipe heatshield is bolted to stock rearset and must be removed and transferred to the Yoshimura rearset).
- 4 Disconnect and remove brake light switch on right stock rear set (rear brake light switch will not be used).
- 5 Install Yoshimura right rear set (see Fig. 2 and Parts Diagram). Use supplied thread lock on the two bolts that secure the right rear set to the chassis and torque these bolts to 2.5 kg-m (18 lb-ft).
- 6 Adjust both rear sets to desired position by removing both 8mm x 20mm flat countersunk bolts, moving the rear set, and reinstalling the bolts in the new location. Torque bolts to 2.0 kg-m (14.4 lb-ft).
- 7 Adjust brake lever to desired position by turning the stock clevis, then tighten jam nut.
- 8 Adjust shift lever to desired position by turning the shift rod and tightening the jam nut.
- 9 Check for proper clearance between new rearset and rear suspension (i.e. swingarm, chain, brake line, etc.).

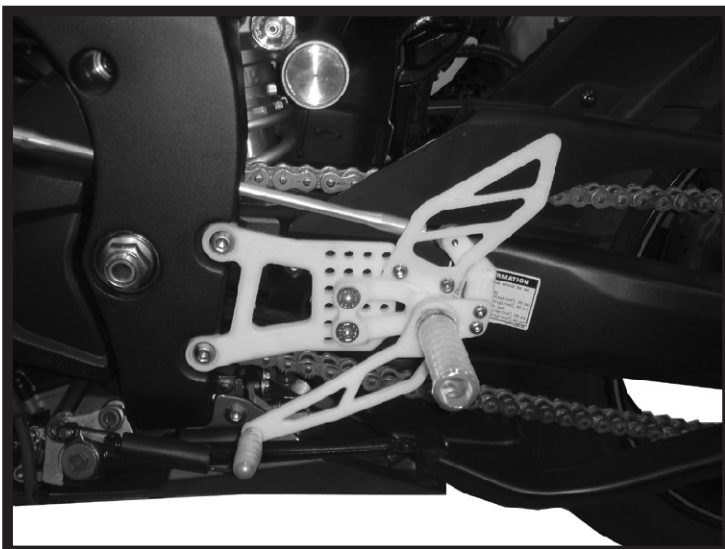


Fig. 1



Fig. 2