



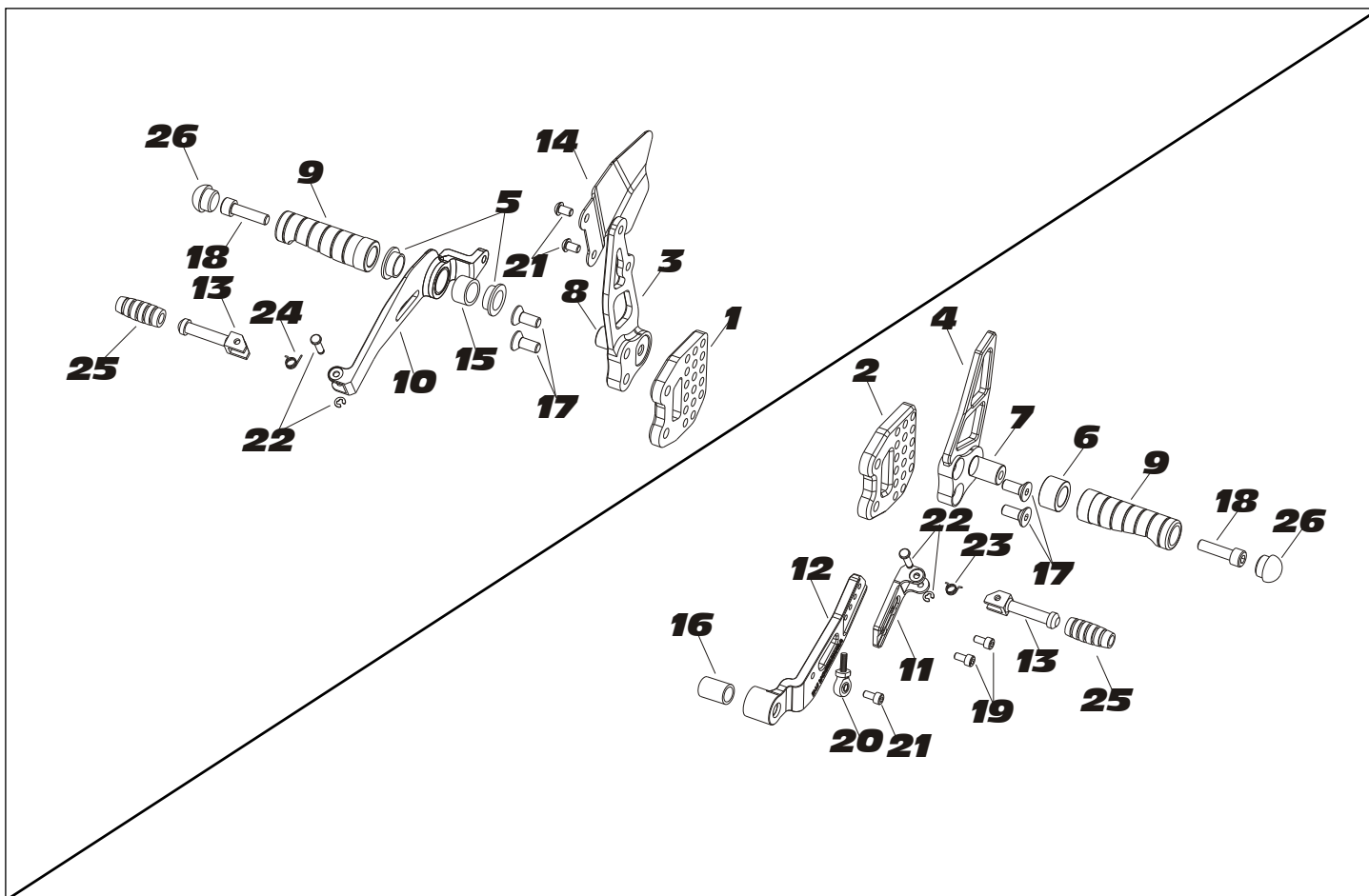
YOSHIMURA

RESEARCH&DEVELOPMENT OF AMERICA, INC.

5420 DANIELS STREET STE A, CHINO CA. 91710 · (800)634-9166 · (909)628-4722 · FACSIMILE (909)591-2198

www.yoshimura-rd.com

R-K891 ADJUSTABLE BILLET REAR SETS 2009-2012 GSXR1000



Parts Diagram

Part List:

NO.	DESCRIPTION	QTY	PART #
1	Right Mount	1	R-K891RM
2	Left Mount	1	R-K891LM
3	Right Bracket	1	R-K891RB
4	Left Bracket	1	R-K816LB
5	Peg Spacer	2	R-K891PC
6	Left Foot Peg Spacer	1	R-K880SPC
7	Pedal Adapter	1	R-K816PA
8	Pedal Adapter	1	R-K891PA
9	Foot Peg	2	R-K891PB
10	Brake Lever	1	R-K891BL
11	Shift Lever Arm	1	R-K891SLA
12	Shift Lever Base	1	R-K891SLB
13	Pedal	2	R-K891PSR
14	Carbon Right Heel Guard	1	R-K891CFG

NO.	DESCRIPTION	QTY	PART #
15	3/4" Bronze Bearing	1	6391K256
16	12mm Bronze Bearing	1	6658K16
17	8mmx20mm Flat Head Hex Screw	4	M8X20FS
18	8mmX30mm Xocket Head Cap Screw	2	M8X30
19	5mmx10mm Button Head Screw	2	M5X10B
20	LH Thread Heim Joint, 6mm Male	1	POS6L
21	6mmX20mm Button Head Screw	3	M6X20BHS
22	Pin and Clevis	2	92735A120
23	Torsion Spring, Shifter	1	JEM-TOR-28
24	Torsion Spring, Brake	1	JEM-TOR-29
25	Lever Rubber Grommet	2	25652-16500
26	Delrin bumper	2	R-K880DB
**	Thread lock blue 2ml tube	1	R-K880ND
**	Yoshimura USA Sticker	1	17029

Caution: Engine and exhaust system can be extremely hot. Let motorcycle cool down before beginning installation.

Note: Read through all instructions before beginning installation.

Tools Needed:

Metric Socket Set, Extension, and Ratchet

Metric Open End Wrenches

Metric Allen Bits

Torque Wrench

Needle Nose Pliers

Installation Steps:

- 1 Remove stock left rear set.
- 2 Install Yoshimura left rear set (see Fig. 1 and Parts Diagram). Use supplied thread lock on the two bolts that secure the rear set to the chassis and torque these bolts to 2.5 kg-m (18 lb-ft).
- 3 Remove stock right rear set.
- 4 Disconnect and remove brake light switch on right stock rear set (rear brake light switch will not be used).
- 5 Install Yoshimura right rear set (see Fig. 2 and Parts Diagram). Use supplied thread lock on the two bolts that secure the right rear set to the chassis and torque these bolts to 2.5 kg-m (18 lb-ft).

NOTE: The forward-most top position may require an aftermarket master cylinder or master cylinder reservoir hose fitting.

- 6 Adjust both rear sets to desired position by removing both 8mm x 20mm flat countersunk bolts, moving the rear set, and reinstalling the bolts in the new location. Torque bolts to 2.0 kg-m (14.4 lb-ft).
- 7 Adjust brake lever to desired position by turning the stock clevis, then tighten jam nut (modification may be necessary).
- 8 Adjust shift lever to desired position by turning the shift rod and tightening the lock nut.
- 9 Check for proper clearance between new rearset and rear suspension (i.e. swingarm, chain, brake line, etc.).



Fig. 1



Fig. 2