



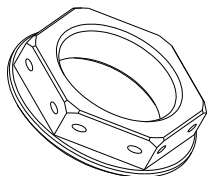
YOSHIMURA

RESEARCH&DEVELOPMENT OF AMERICA, INC.

5420 DANIELS STREET STE A, CHINO CALIF. 91710 · (800)634-9166 · (909)628-4722 · FACSIMILE (909)591-2198

www.yoshimura-rd.com

R-KSSA-K STEERING STEM NUT KIT



Instructions:

1. Remove stock steering stem nut.
2. Install Yoshimura steering stem nut. Torque to factory specification.

If safety wire is required, loop safety wire through the holed drilled in the nut and secure to stationary location on upper triple clamp.

Note: Installation to be performed by qualified technician only.

NO.	DESCRIPTION	QTY	PART #
1	Stem Nut	1	R-KSSA
2	Yoshimura Sticker	2	17020C



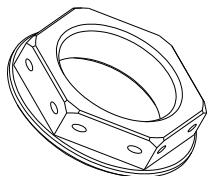
YOSHIMURA

RESEARCH&DEVELOPMENT OF AMERICA, INC.

5420 DANIELS STREET STE A, CHINO CALIF. 91710 · (800)634-9166 · (909)628-4722 · FACSIMILE (909)591-2198

www.yoshimura-rd.com

R-KSSA-K STEERING STEM NUT KIT



Instructions:

1. Remove stock steering stem nut.
2. Install Yoshimura steering stem nut. Torque to factory specification.

If safety wire is required, loop safety wire through the holed drilled in the nut and secure to stationary location on upper triple clamp.

Note: Installation to be performed by qualified technician only.

NO.	DESCRIPTION	QTY	PART #
1	Stem Nut	1	R-KSSA
2	Yoshimura Sticker	2	17020C