



YOSHIMURA

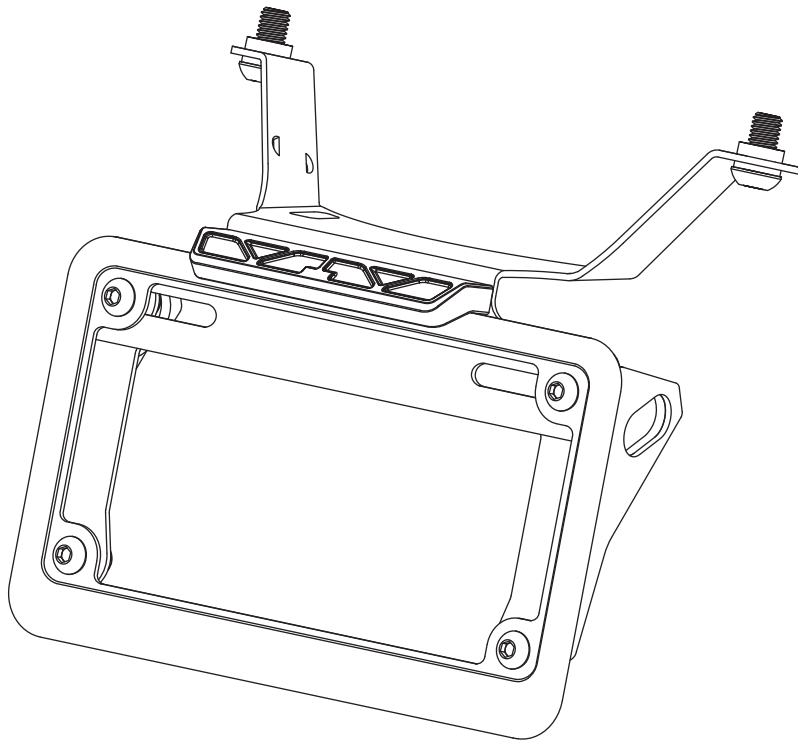
RESEARCH&DEVELOPMENT OF AMERICA, INC.

5420 DANIELS STREET STE A, CHINO CA., 91710 · (800) 634-9166 · (909) 628-4722 · FAX (909) 591-2198

www.yoshimura-rd.com

FENDER ELIMINATOR KIT

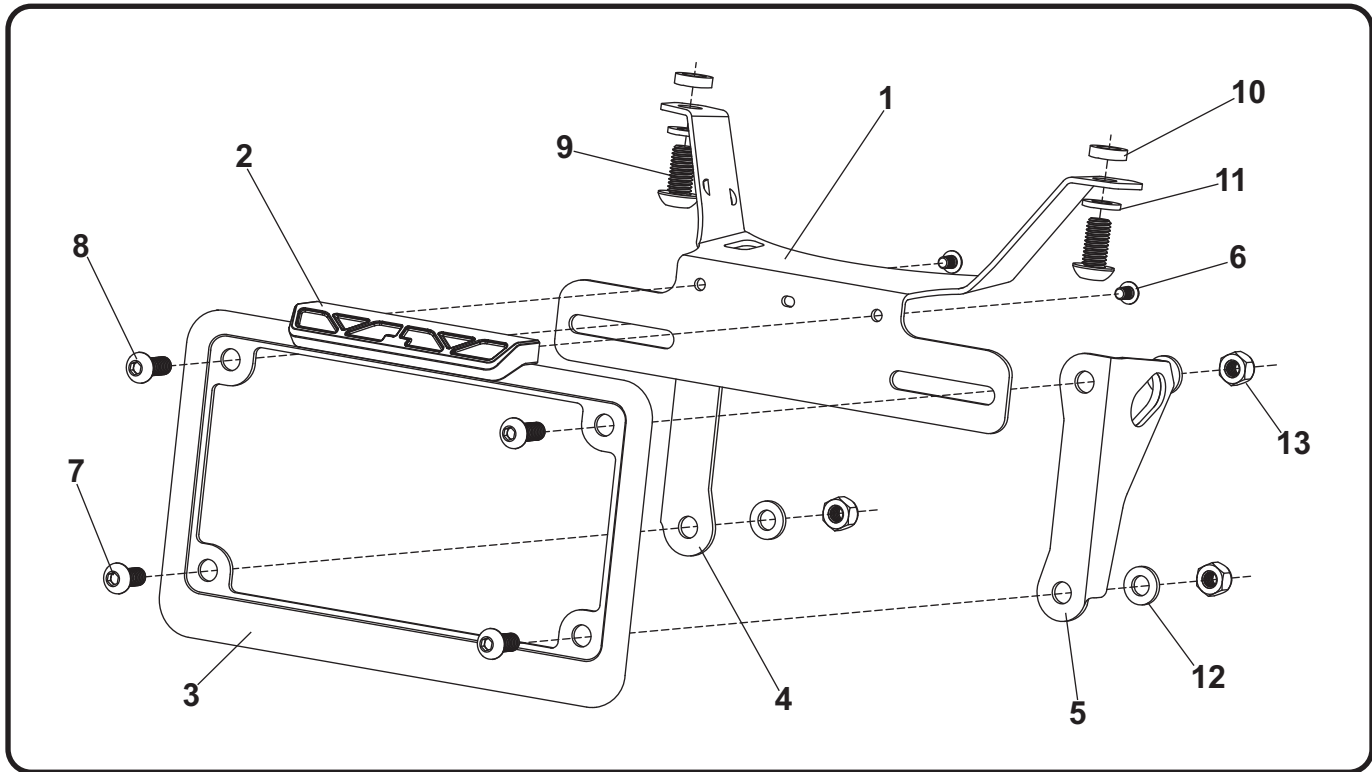
070BG126510
Honda CB650R



THIS PRODUCT IS NOT DOT APPROVED.

Yoshimura R&D of America, Inc. is not liable or responsible for any resulting event caused by the installation of this product. Check with local laws and regulations for compliance prior to installation and use. This product is not intended for use on public highways.





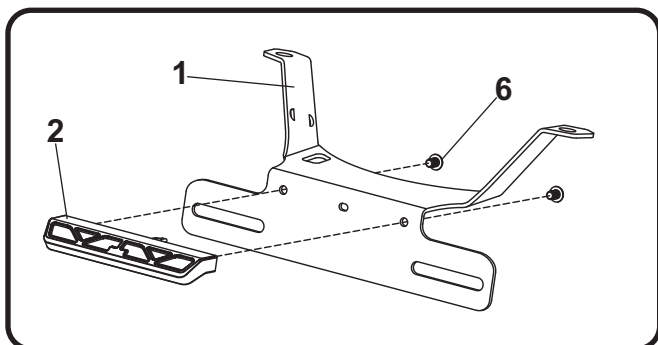
No.	Item	Description	Qty.
1	12651-FEBKT	Fender Eliminator Bracket	1
2	070BG-LH-K1	LED License Plate Light	1
3	070BG-LPF	License Plate Frame	1
4	12310-TSBKT-L	Left Turn Signal Bracket	1
5	12310-TSBKT-R	Right Turn Signal Bracket	1
6	M4X6BHS	4mm x 6mm Button Head Screw	2
7	M6X14BHS	6mm x 14mm Button Head Screw	2
8	M6X16BHS	6mm x 16mm Button Head Screw	2
9	M8X16BHS	8mm x 16mm Button Head Screw	2
10	12651-FEBKT-SPR	Fender Eliminator Bracket Spacer	2
11	8MMWASHER	8mm Washer	2
12	6MMWASHER	6mm Washer	4
13	6MMLN	6mm Nylon Lock Nut	4
**	BN-SSS-22-18	Butt Connectors	2
**	ZT-200	Cable Ties	1
**	17100	Yoshimura Sticker Sheet	1
Optional Parts			
	070BGUNVTBKT	Universal Turn Signal Bracket Kit	
	072BGLTSFK	Yoshimura Turn Signal Kit	
	072BGLTSFK-S	Yoshimura Sequential Turn Signal Kit	
	072BGLTSR	Yoshimura Rear Turn Signal Kit w/ Relay	
	072BGLTSR-S	Yoshimura Sequential Rear Turn Signal Kit w/ Relay	

Removal

1. Remove passenger and rider seat.
2. Locate and disconnect the license plate light and turn signal connectors.
3. While securely supporting the stock fender assembly, remove the four bolts securing the stock fender and carefully remove the stock fender assembly making sure not to damage license plate light and turn signal connectors.
4. Disassemble the stock fender assembly and remove left and right turn signals.
5. Cut the stock license plate light connector from the stock fender assembly. Be sure to cut at least a 6" section of wire from the connector.

Installation

1. Install (No. 2) *070BG-LH-K1*, Yoshimura license plate light onto (No. 1) *12651-FEBKT*, Yoshimura fender eliminator bracket using (No. 6) *M4X6BHS*, 4mm button head screws provided in the kit.



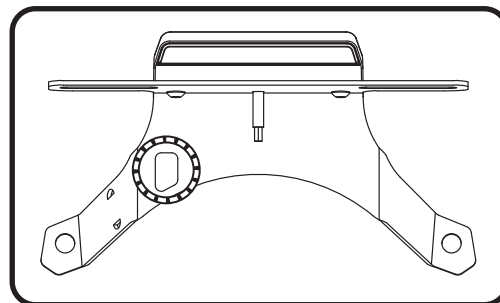
2. Route license plate light wire through hole in bracket and using the *BN-SSS-22-18*, solder shrink connectors supplied in the kit, connect Yoshimura license plate light wires to the stock license plate light wires as follows:

Red -to- Brown
Black -to- Green

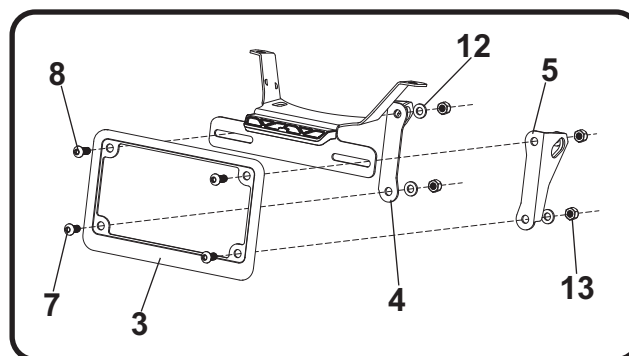
- a) Strip the stock fender light wire ends 1/4" - 1/2" and insert into *BN-SSS-22-18*, solder shrink connectors provided in the kit.
- b) Center the spliced wire ends in the middle and using a heatgun or lighter, apply heat evenly on the outer edges of the solder connector to shrink and hold wires in place.

- c) Making sure that the stripped ends are centered, heat the center of the solder connector evenly until the solder begins to liquify.
- d) Allow to cool completely and tug both ends of the wires to verify that connection is secured.

Scan for link to solder shrink connector instruction video.



3. Install the stock left and right turn signals onto (No. 4,5) *12310-TSBKT-L/R*, turn signal brackets.
5. Install (No. 4,5) *12310-TSBKT-L/R* left and right turn signal brackets and (No. 3) *070BG-LPF*, license plate frame using (No. 7, 8) *M6X16BHS* & *M6X14BHS*, 6mm screws, (No. 12) *6MMWASHER*, washers, and (No. 13) *6MMLN*, nuts as shown below.

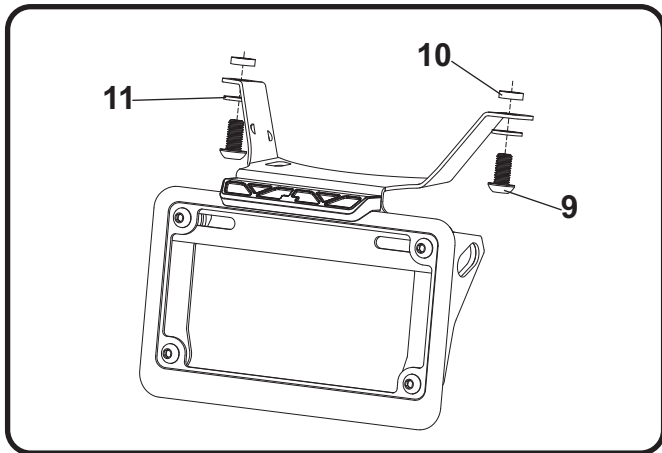


6. Route turn signal wires through hole in fender bracket. Then continue to route license plate light wire and turn signal wires through hole in undertail and re-connect connectors.
7. Secure fender eliminator bracket assembly to undertail using (No. 9) *M8X16BHS*, 8mm screws, (No. 11) *8MMWASHER*, washers, and (No. 10) *12651-FEBKT-SPR*, spacer.

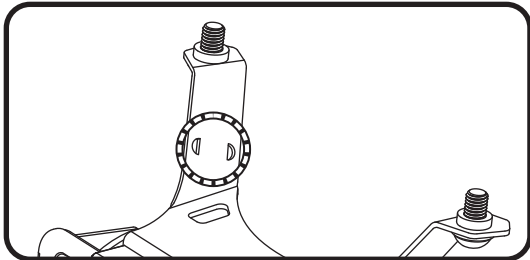
Note¹: Install fender bracket assembly to the rearmost mounting holes as shown.



Note²: Spacer mounts between the undertail and fender bracket.



8. Using the cable tie supplied in the kit, secure license plate light and turn signal wires to left side of fender bracket.



9. Re-install passenger seat and rider seat.
10. Check for proper function of license plate light, turn signals, brake light, and that all brackets and components are secure prior to riding.