



# YOSHIMURA

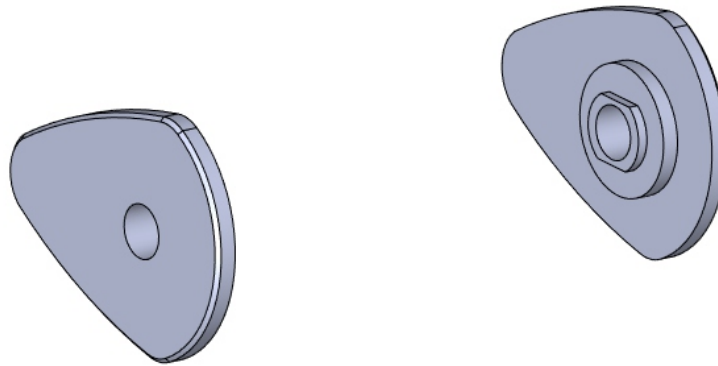
RESEARCH&DEVELOPMENT OF AMERICA, INC.

5420 DANIELS STREET STE A, CHINO CA., 91710 · (800) 634-9166 · (909) 628-4722 · FAX (909) 591-2198

[www.yoshimura-rd.com](http://www.yoshimura-rd.com)

## **TURN SIGNAL ADAPTER PLATES**

### **Honda Navi 073BG121090**



No.	Item	Description	Qty.
1	-	Front Turn Signal Plate, Outside	2
	KK000106	Diode Kit Required (Sold Separately)	
<b>Optional Accessories</b>			
	072BGLTSFK	Yoshimura LED Front Turn Signal Kit	
	072BGLTSFK-S	Yoshimura Sequential LED Front Turn Signal Kit	
	073BG-HON-1	Yoshimura Plug-and-Play Turn Signal Wire Adapter	

**IMPORTANT:** Installation of this product requires the use of aftermarket M8 mounted turn signals.  
Not compatible with stock turn signals.

## Important Note

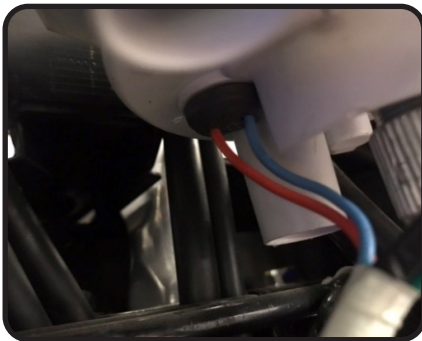
*Diode kit KK000106 is required for proper front turn signal operation (sold separately).*

## Removal

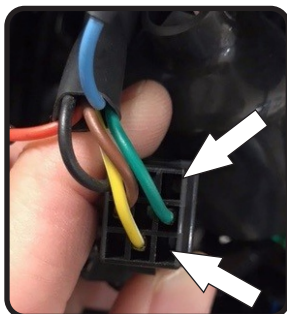
1. Remove the four headlight screws on headlight housing and remove the headlight to access front turn signal wires.
2. Locate and disconnect left and right turn signal connectors.
3. Remove stock turn signal securing nut and metal washer and carefully remove turn signal. Repeat step for opposite side.

## Diode Installation

1. Locate the orange and blue indicator light wires on the backside of the dash.



2. Follow the wires to the harness connector and disconnect. De-pin the orange and blue wires from both ends of the connector.



3. Connect the blue indicator light wire to the black wire from the diode kit and ground to the nearest frame bolt. Connect orange indicator light wire to the blue wire on the diode kit. Connect the red wires on the diode kit to the blue and orange wires on the other end of the connector.

## Installation

1. Install turn signal plate and turn signal. Secure using the stock metal washer and nut. Connect turn signal connectors.

Note: 073BG-HON-1 turn signal adapter wires are available for purchase separately for direct plug-and-play alternative with Yoshimura LED turn signals.

2. Repeat step for opposite side.
3. Re-install headlight onto headlight housing using opposite steps of removal.
4. Check for proper function of turn signals and that all components are secure prior to riding. Adjust turn signal rotation as needed and tighten turn signal nut.