



# YOSHIMURA

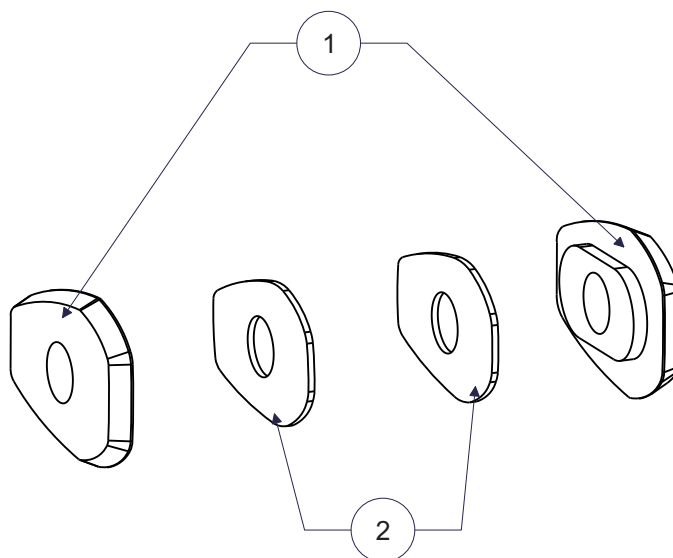
RESEARCH&DEVELOPMENT OF AMERICA, INC.

5420 DANIELS STREET STE A, CHINO CA., 91710 · (800) 634-9166 · (909) 628-4722 · FAX (909) 591-2198

***www.yoshimura-rd.com***

## ***TURN SIGNAL ADAPTER PLATES***

### ***Honda CB 1000 Hornet SP 073BG121500***



No.	Item	Description	Qty.
1	073BG121500-B	Front Turn Signal Plate	2
2	073BG121500-IN	Metal Inner Plate	2
<b><i>Optional Accessories</i></b>			
	072BGLTSFK	Yoshimura LED Front Turn Signal Kit	
	072BGLTSFK-S	Yoshimura Sequential LED Front Turn Signal Kit	

**IMPORTANT:** Installation of this product requires the use of aftermarket M8 mounted turn signals.  
Not compatible with stock turn signals.

## Removal

1. Remove the meter cover (2 screws).
2. Remove the headlight cowls.



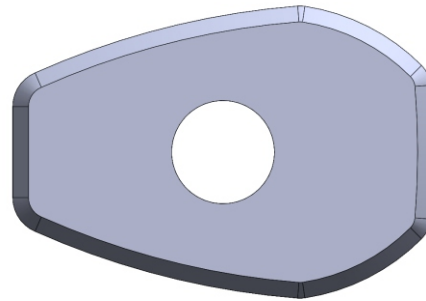
3. Remove the 2 bolts securing headlight assembly to the headlight stay.
4. Locate and disconnect the turn signal and headlight connectors.
5. Remove headlight assembly.

## Installation

1. Install aftermarket turn signal and *073BG121500-B*, front turn signal plate onto front side of turn signal holder. Install *073BG121500-IN*, metal inner plate on backside of turn signal holder and secure using turn signal nut.

Rear of bike

Front of bike



Right Side Example Shown

2. Repeat steps for the opposite side.
3. Reconnect turn signals.
4. Reinstall headlight assembly, cowls, and meter cover using the reverse steps of removal.
5. Check for proper function of turn signals and that all components are secure prior to riding. Adjust turn signal rotation as needed and tighten turn signal nut.