



YOSHIMURA

RESEARCH&DEVELOPMENT OF AMERICA, INC.

5420 DANIELS STREET STE A, CHINO CA., 91710 · (800) 634-9166 · (909) 628-4722 · FAX (909) 591-2198

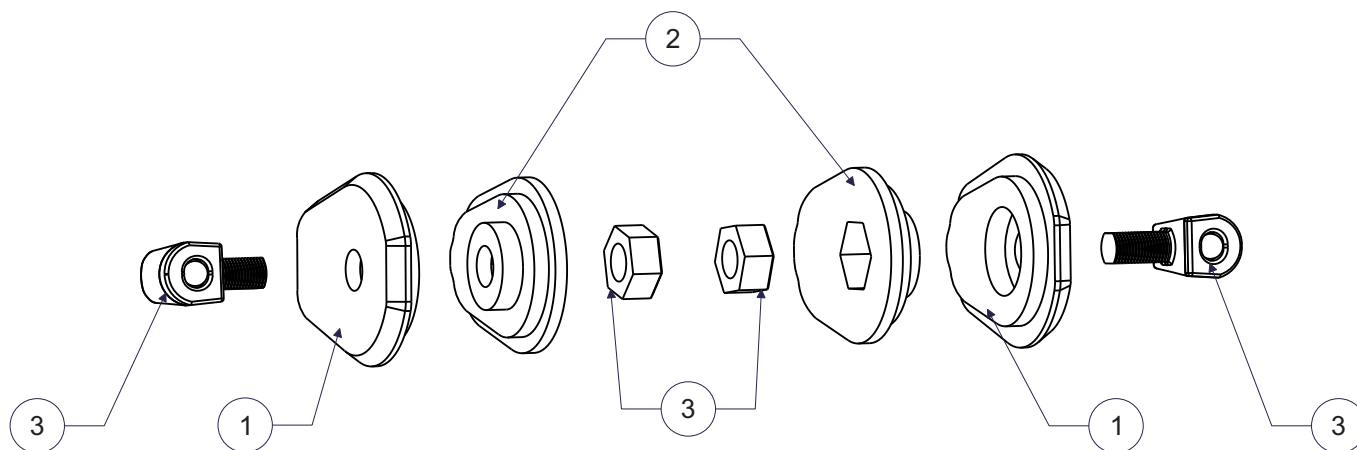
www.yoshimura-rd.com

MICRO TURN SIGNAL ADAPTER PLATES

Honda

CB 750 Hornet

074BG127600



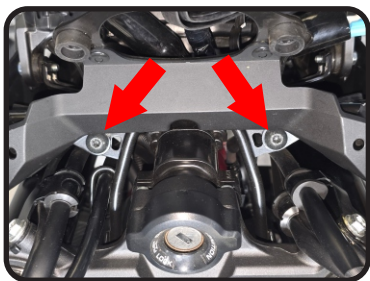
No.	Item	Description	Qty.
1	074BG127600-OUT	Outer Turn Signal Plate	2
2	074BG127600-IN	Inner Turn Signal Plate	2
3	072BGMICRTSR	Micro LED Turn Signal Kit	1

Removal

1. Remove the headlight cowl and meter cover.

Note: Uninstalls as one piece.

2. Locate and disconnect the turn signal connectors.
3. Remove the meter display.
4. Remove the headlight stay bolts.

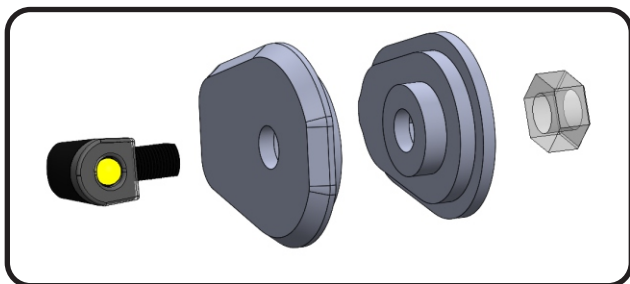


5. Remove the turn signal holder.
6. Remove turn signals from the turn signal holder and cut the turn signal wires 4" from the connector, NOT the wiring harness wires.

Installation

1. Place the micro turn signal in the hole of the outer turn signal plate and slot into the turn signal holder.
2. Place the inner turn signal plate on the inside of the turn signal holder and secure the turn signal with the plastic nut.

Note: Proper positioning of the micro turn signal in the adapter plate is dependent on the orientation of the plastic nut. If the turn signal is not facing forward, remove and rotate the plastic nut in the adapter plate pocket and re-install the turn signal. Repeat until the turn signal is facing forward.



RIGHT SIDE EXAMPLE SHOWN

3. Using the solder shrink connectors supplied in the micro turn signal kit, connect turn signal wires to micro light wires as follows:

Right (Blue):

Green - Black

Blue - Blue

Left (Orange):

Green - Black

Orange - Blue

- a) Strip the stock turn signal wire ends 1/4" - 1/2" and insert into *BN-SSS-22-18*, solder shrink connectors provided in the kit.
- b) Center the spliced wire ends in the middle and using a heat gun or lighter, apply heat evenly on the outer edges of the solder shrink connector to shrink and hold wires in place.
- c) Making sure that the stripped ends are centered, heat the center of the solder shrink connector evenly until the solder begins to liquify.
- d) Allow to cool completely and tug both ends of the wires to verify that connection is secured.

Scan the QR code below for link to solder shrink connector instruction video.



Scan QR code on the micro turn signal packaging for wiring diagram.

Note¹: The white running light wire and red brake light wire on the micro signals will not be used. Bundle back up and tuck away.

Note²: A red front light is prohibited in most states. Check with local laws and regulations prior to installation.

4. Repeat steps on the opposite side.
5. Reconnect turn signal connectors to the wiring harness.

6. Re-install the meter display, headlight stay bolts, turn signal holder, cowls, and meter cover using the reverse steps of removal.
7. Check for proper function of turn signals and headlight and that all components are secure prior to riding.