



# YOSHIMURA

RESEARCH&DEVELOPMENT OF AMERICA, INC.

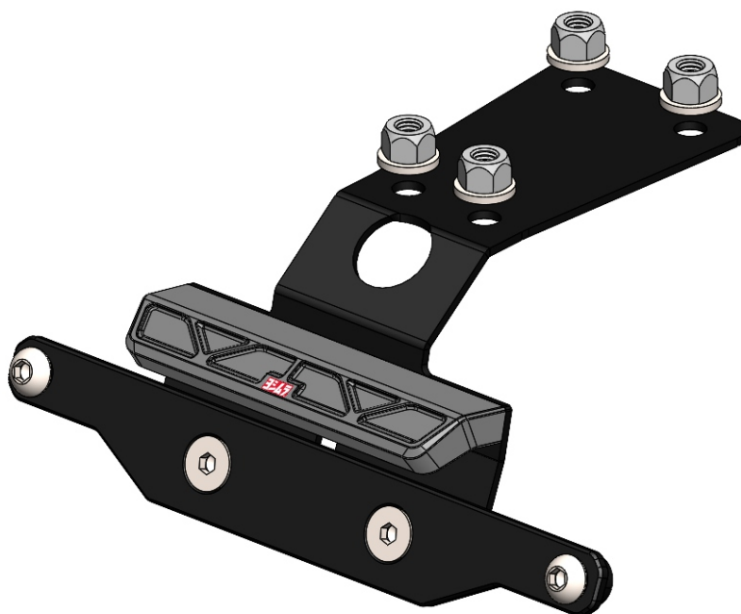
5420 DANIELS STREET STE A, CHINO CA., 91710 · (800) 634-9166 · (909) 628-4722 · FAX (909) 591-2198

**[www.yoshimura-rd.com](http://www.yoshimura-rd.com)**

## **FENDER ELIMINATOR KIT**

**075BG127600**

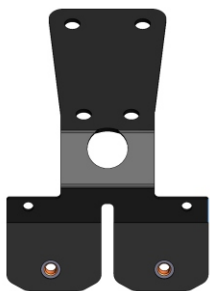
**Honda CB 750 Hornet**



**THIS PRODUCT IS NOT DOT APPROVED.**

Yoshimura R&D of America, Inc. is not liable or responsible for any resulting event caused by the installation of this product. Check with local laws and regulations for compliance prior to installation and use. This product is not intended for use on public highways.

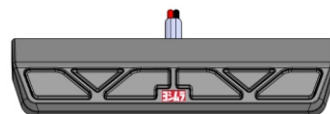




12760-FEBKT  
Fender Eliminator Bracket



FE-LP-BKT  
License Plate Bracket



075BG-LH-H5  
License Plate Light



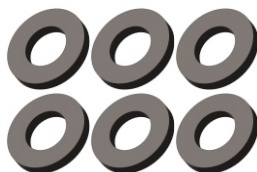
M6X10BHS  
6mm x 10mm  
Button Head Screw



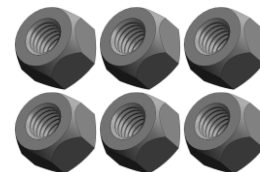
M4X6BHS  
4mm x 6mm  
Button Head Screw



M6X12FS-SS  
6mm x 12mm  
Flat Head Screw



6MMWASHER-SS  
6mm Washer



6MMLN-SS  
Nylon Lock Nut

## Assembly Diagram



Button head screws, washers, and lock nuts are for the bottom two license plate holes.

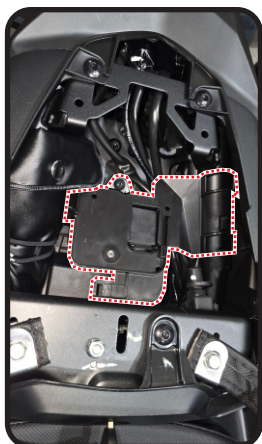
**IMPORTANT NOTE:**

*This kit does not include turn signal brackets to install OEM or aftermarket turn signals.*

*Ensure you have all necessary components prior to beginning installation.*

## Removal

1. Remove passenger seat.
2. Remove the plastic tray and tool kit for easier access.

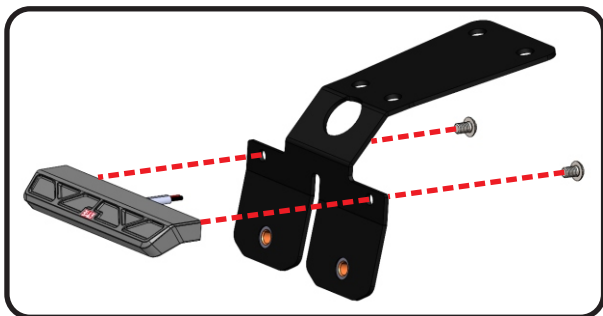


3. Locate and disconnect turn signal and license plate light connectors.
4. While supporting the rear fender assembly, remove the four fender bolts.

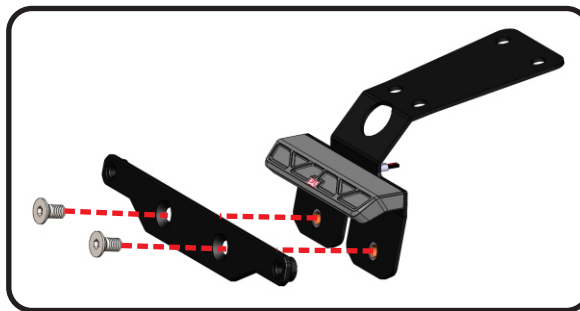
Note: The four stock fender bolts will be reused.

## Installation

1. Install 075BG-LH-H5, Yoshimura license plate light onto 12755-FEBKT1, Yoshimura fender eliminator bracket using M4X6BHS, 4mm button head screws provided in the kit.

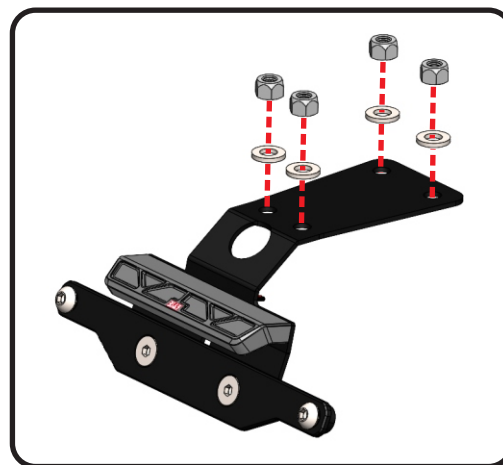


2. Install FE-LP-BKT, license plate bracket onto the fender eliminator bracket using M6X12FS-SS, flat head screws.



Note: M6X10BHS, button head screws, will be used to secure the license plate to FE-LP-BKT, license plate bracket. 6MMLN-SS, nylon lock nuts and 6MMWASHER-SS, washers are for the bottom license plate holes.

3. Route the license plate light connector through hole in fender bracket, then continue to route through hole in under tail.
4. Secure fender eliminator bracket assembly to frame using the four stock fender bolts, nylon lock nuts, and washers. Torque fender bolts to factory specifications.



5. Connect the license plate light to the wiring harness.
6. Re-install tool kit, plastic tray, and passenger seat
7. Check for proper function of license plate light, turn signals, brake light, and that all brackets and components are secure prior to riding.