



YOSHIMURA

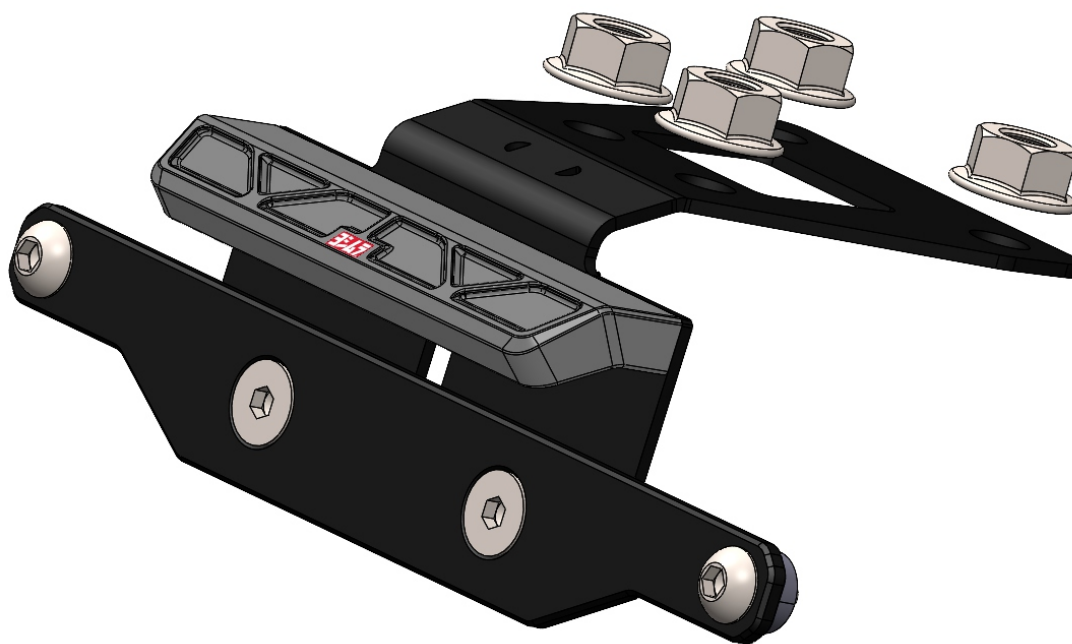
RESEARCH&DEVELOPMENT OF AMERICA, INC.

5420 DANIELS STREET STE A, CHINO CA., 91710 · (800) 634-9166 · (909) 628-4722 · FAX (909) 591-2198

www.yoshimura-rd.com

FENDER ELIMINATOR KIT

075BG147100
Kawasaki Ninja 400

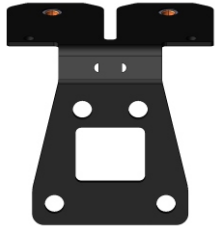


THIS PRODUCT IS NOT DOT APPROVED.

Yoshimura R&D of America, Inc. is not liable or responsible for any resulting event caused by the installation of this product. Check with local laws and regulations for compliance prior to installation and use. This product is not intended for use on public highways.



x1



14710-FEBKT-1
Fender Eliminator Bracket

x1



FE-LP-BKT
License Plate Bracket

x1



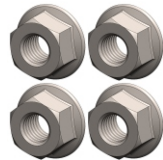
075BG-LH-K1
License Plate Light

x1



ZT-400
Cable Tie

x4



8MMLN-SS
8mm Lock Nut

x2



M4X6BHS
4mm x 6mm
Button Head Screw

x4



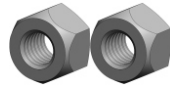
M6X10BHS
6mm x 10mm
Button Head Screw

x2



M6X12FS
6mm x 12mm
Flat Head Screw

x2



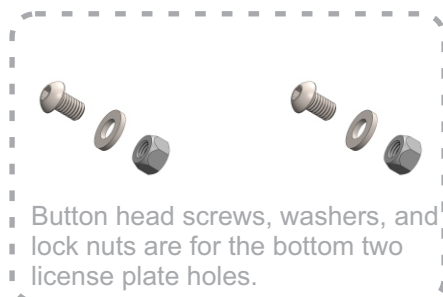
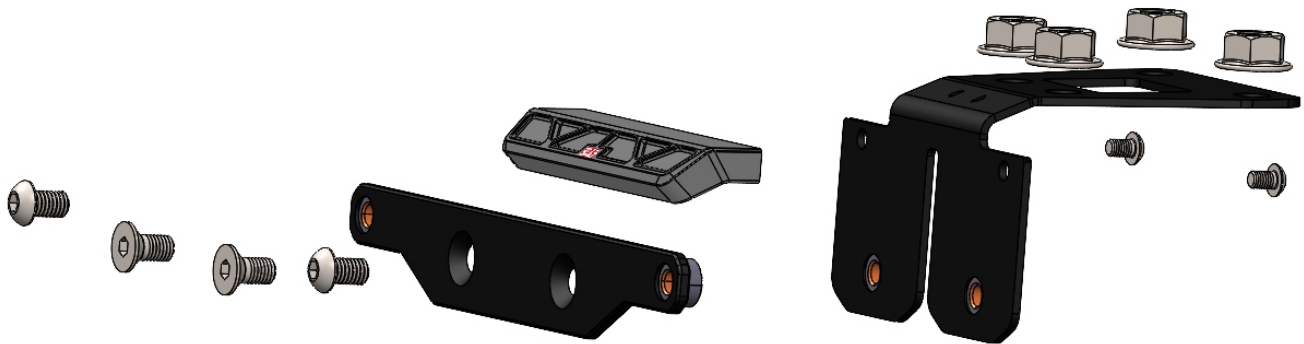
6MMLN-SS
6mm Nylon Lock Nut

x2



6MMWASHER-SS
6mm Stainless Washer

Assembly Diagram



Button head screws, washers, and lock nuts are for the bottom two license plate holes.

IMPORTANT NOTE:

This kit does not include turn signal brackets to install OEM or aftermarket turn signals.

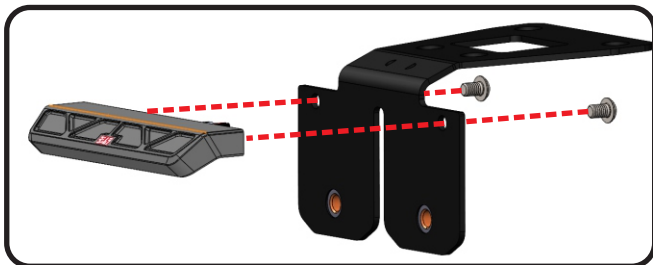
Ensure you have all necessary components prior to beginning installation.

Removal

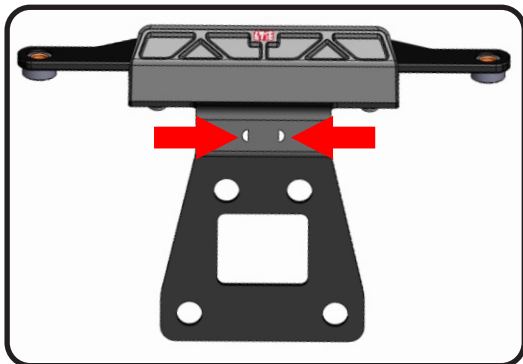
1. Remove passenger seat and lift tray to access the four fender bolts.
2. Locate and disconnect the license plate light and turn signal wires.
3. While securely supporting the stock fender assembly, remove the four bolts and carefully remove the stock fender assembly.

Installation

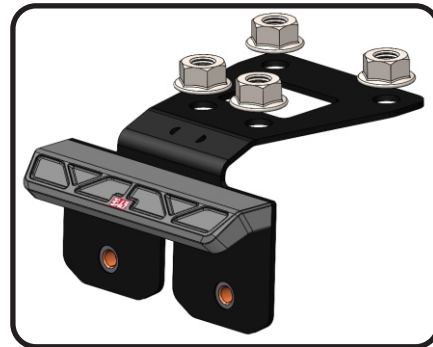
1. Install *075BG-LH-K1*, Yoshimura license plate light onto *14710-FEBKT-1*, Yoshimura fender eliminator bracket using *M4X6BHS*, 4mm button head screws provided in the kit.



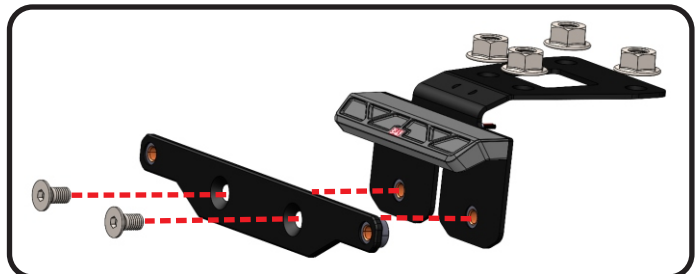
2. Route *ZT-400*, cable tie through *14710-FEBKT-1*, fender eliminator bracket's crescent holes to secure license plate light wires in later step. Do not tighten at this time.



3. Install *14710-FEBKT-1*, fender eliminator bracket to subframe using the stock fender bolts and supplied *8MMLN-SS*, 8mm lock nuts. Torque bolts to factory specifications.



4. Install *FE-LP-BKT*, onto *14710-FEBKT-1*, fender eliminator bracket using *M6X12FS*, flat head screws.



Note: *M6X10BHS*, button head screws will be used to secure the license plate to *FE-LP-BKT*, license plate bracket. *6MMLN-SS*, nylon lock nuts and *6MMWASHER-SS*, washers are for the bottom license plate holes.

5. Route license plate light wires through hole in *14710-FEBKT-1*, fender eliminator bracket and then under the passenger seat. Reconnect license plate light and turn signal connectors.
6. Tighten *ZT-400*, cable tie to secure plate light wires to *14710-FEBKT-1*, fender eliminator bracket.
7. Re-install passenger seat.
8. Check for proper function of license plate light, turn signals, brake light, and that all brackets and components are secure prior to riding.