



YOSHIMURA

RESEARCH&DEVELOPMENT OF AMERICA, INC.

5420 DANIELS STREET STE A, CHINO CA 91710 · (800) 634-9166 · (909) 628-4722 · FAX (909) 591-2198

www.yoshimura-rd.com

STREET SERIES

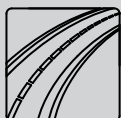
Qualified Manufacturer Declared "Modified Part"

2025

SUZUKI DR-Z4

1166125520 (SS/CF)

RS-12 Slip-On System



All Street Series systems are:

- Slip-on/Bolt-on applications that do not require tampering with the vehicle's emissions control system.
- CARB/EPA tail-pipe emissions compliant.
- Marked with appropriate EPA noise labels.
- Not tested for EPA new vehicle noise compliance.

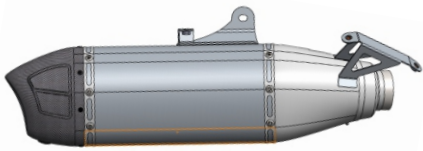


You must know how to remove and replace your stock exhaust in order to install this product otherwise have it installed by a professional mechanic. Keep all stock parts from your existing system as some components may be necessary to install your new Yoshimura exhaust depending on the application. Read through all instructions before beginning installation. Exhaust system can be extremely hot. Let motorcycle cool down before beginning installation. Always wear hand and eye protection and take precautionary measures to avoid injury.



NOTE: IN THE STATE OF CALIFORNIA, IT IS ILLEGAL TO MODIFY THE EMISSION CONTROL SYSTEM, WHICH INCLUDES THE CARBURETORS OF ANY VEHICLE.

x1



116612S520RMA
Yoshimura Muffler



11661-435
Yoshimura Tailpipe



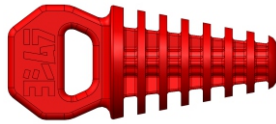
11661-HS
Heat Shield

x2



RC116HSB-BK-P
6mm x 8mm
Flanged Button Head Screw

x1



347PLUG
End Cap Plug

x1



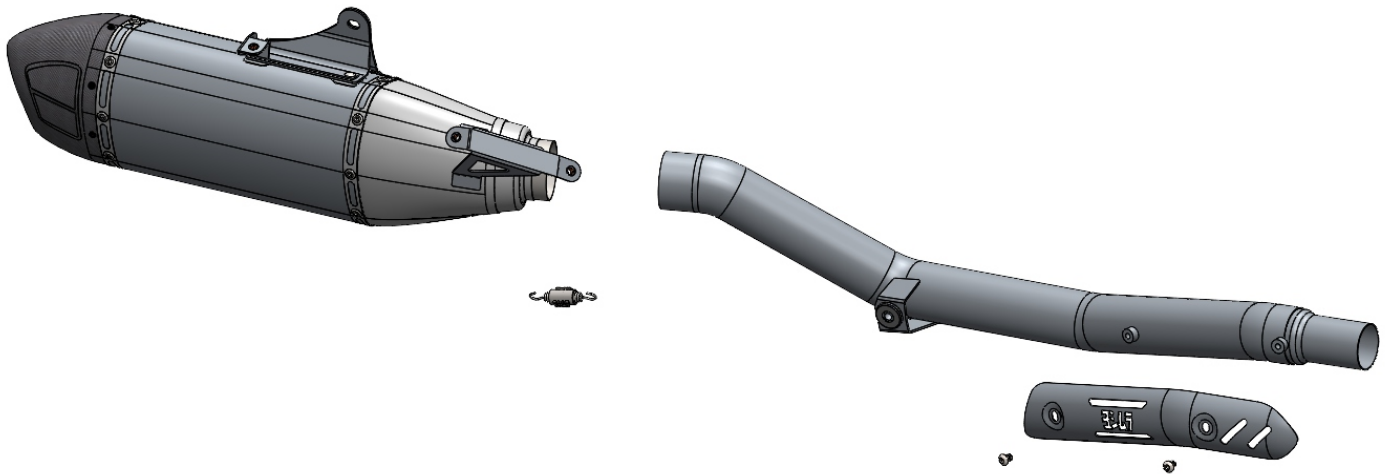
RACE-SPS-1
Med. Insulated Spring

Assembly Diagram

x1



ST-200
Spring Puller Tool



CAUTION: Exhaust system can be extremely hot. Let motorcycle cool down before beginning installation. Always wear hand and eye protection and take precautionary measures to avoid injury.

WARNING: Always properly support vehicle with a stand and/or lift when servicing or performing any work. Unstable vehicles may present dangerous conditions and may cause property damage and/or personal injury.

NOTE: Read through all instructions before beginning installation.

Removal

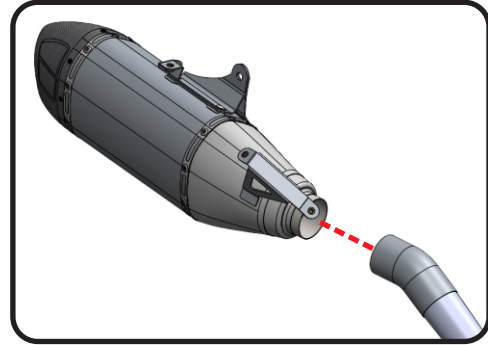
1. Remove the right black side panel.
2. Remove the right rear number plate.
3. Remove the stock muffler heat shield and header heat shield.
4. Loosen muffler exhaust clamp and leave on stock header.
5. Remove muffler chassis mounting bolt by the passenger peg.
6. While securely supporting the stock muffler assembly, remove the muffler bracket mounting bolt and carefully remove the muffler assembly from the header outlet.

Note¹: After detaching from the header outlet, rotate the muffler assembly 90 degrees outward and then pull rearward to clear the frame and other interfering components.

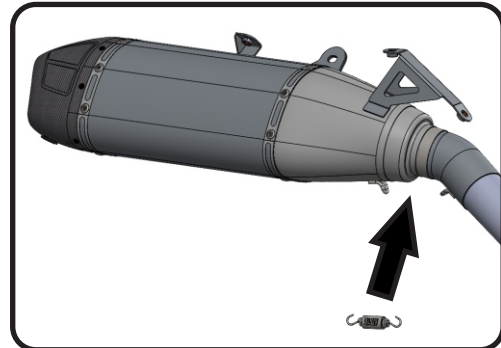
Note²: The stock exhaust gasket and stock muffler heat shield will be reused.

Installation

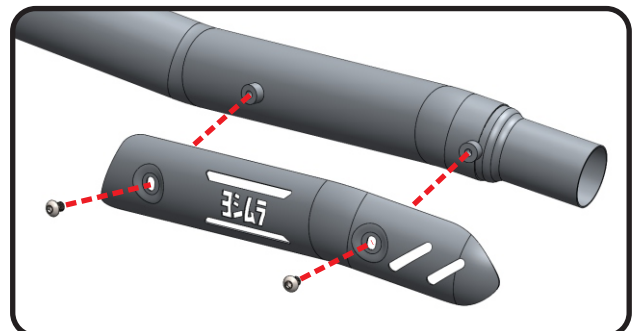
1. Insert 11661-435, Yoshimura tailpipe into the stock header. Secure tailpipe using the stock chassis mounting bolt. Do not tighten at this time.
2. Insert 116612S520-RMA, Yoshimura muffler into the tailpipe. Secure using stock mounting hardware and torque to factory specifications.



3. Tighten the chassis mounting bolt to factory specifications.
4. Install RACE-SPS-1, medium spring using ST-200, spring puller tool.



5. Install 11661-HS, heat shield using RC-116HSB-BK-P, flanged button head screws.



6. Install the stock muffler heat shield onto the Yoshimura muffler using stock hardware. Tighten to factory specifications.



7. Reinstall the rear number plate and black side panel using reverse steps of removal.
8. Before starting vehicle, check for proper clearance between new exhaust system and rear suspension (i.e. tire, swingarm, brakes, rear shock, and etc.) If any problem is found, please carefully follow through the installation steps again. If problem still persists, please call Yoshimura Tech Department at (800) 634-9166 / in CA (909) 628-4722.
9. It is recommended that the muffler and tailpipe be wiped down with rubbing alcohol to remove oil and fingerprints. This will help prevent tarnishing of the finish after the exhaust is heated up.

Note: After starting motorcycle, it is normal for new exhaust system and muffler to emit smoke until oil residue burns off.