



YOSHIMURA

RESEARCH&DEVELOPMENT OF AMERICA, INC.

5420 DANIELS STREET STE A, CHINO CA., 91710 · (800) 634-9166 · (909) 628-4722 · FAX (909) 591-2198

www.yoshimura-rd.com

RACE SERIES

Qualified Manufacturer Declared "Modified Part"

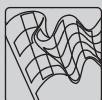
2021

Honda Trail 125

121600K500 (SS/SS)

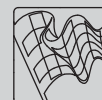
Straight Cyclone Full-System

FOR CLOSED COURSE COMPETITION ONLY; NOT INTENDED FOR STREET USE



Race Series systems are:

- NOT CARB/EPA tail-pipe emissions compliant.
- NOT street legal.
- For "Closed Course Competition" use only.

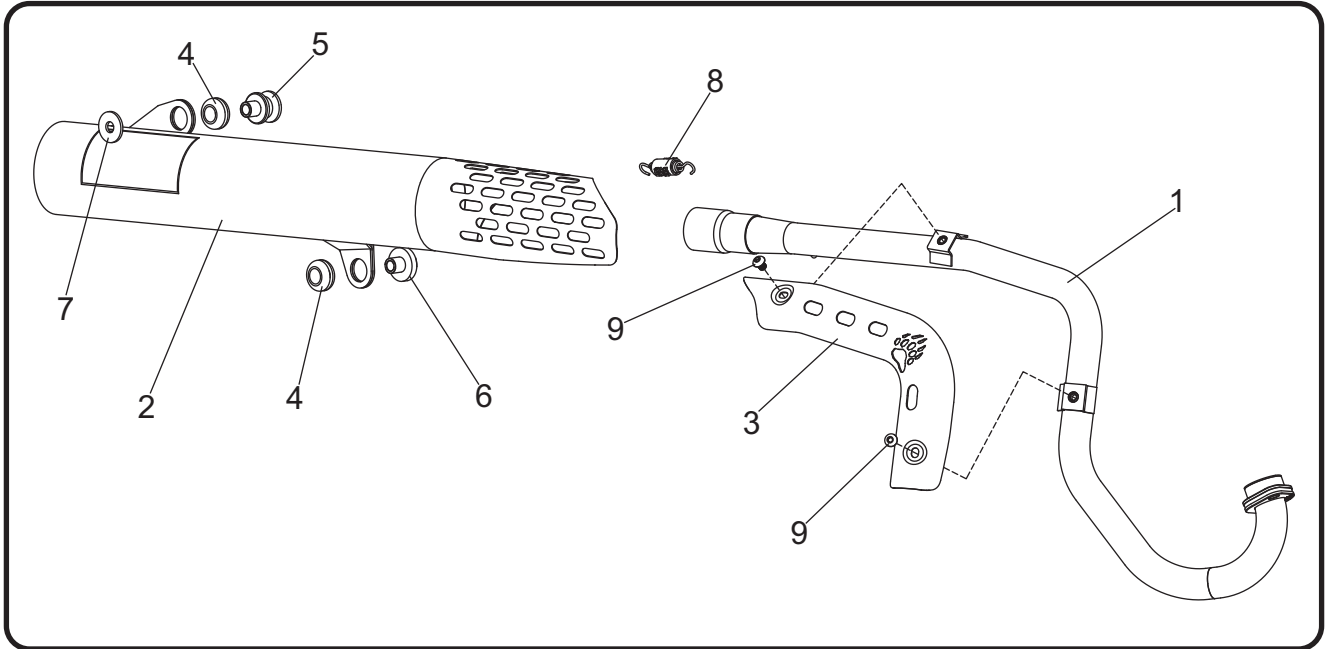


You must know how to remove and replace your stock exhaust in order to install this product otherwise have it installed by a professional mechanic. Keep all stock parts from your existing system as some components may be necessary to install your new Yoshimura exhaust depending on the application. Read through all instructions before beginning installation. Exhaust system can be extremely hot. Let motorcycle cool down before beginning installation. Always wear hand and eye protection and take precautionary measures to avoid injury.

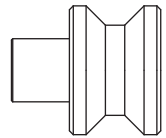


NOTE: IN THE STATE OF CALIFORNIA, IT IS ILLEGAL TO MODIFY THE EMISSION CONTROL SYSTEM, WHICH INCLUDES THE CARBURETORS OF ANY VEHICLE.

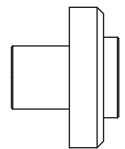
Assembly Diagram



No.	Item	Description	Qty.
1	12160-401	Yoshimura Header	1
2	121600K500-RMA	Yoshimura Muffler Assembly	1
3	12160-HS	Header Heatshield	1
4	Z1022	Rubber Grommet	1
5	ALS-031	Upper Muffler Aluminum Spacer	1
6	12160-SPCR	Lower Muffler Aluminum Spacer	1
7	8MMWASHERL	8mm Large Washer	1
8	RACE-SPS-1	Medium Exhaust Spring	1
9	RC116HSB-BK-P	6mm x 8mm Heatshield Screw	2
**	M5X12BHS	5mm x 12mm Screw (for opt Spark Arrester)	3
**	5MM-LCKWSH	5mm Lock Washer (for opt Spark Arrester)	3
**	ST-200	Spring Puller Tool	1
**	17100	Sticker Kit Sheet	1
Optional Part			
SA-22-K		Trail 125 Spark Arrester Kit	



ALS-031



12160-SPCR

** Not shown in diagram.

CAUTION: Exhaust system can be extremely hot. Let motorcycle cool down before beginning installation. Always wear hand and eye protection and take precautionary measures to avoid injury.

WARNING: Always properly support vehicle with a stand and/or lift when servicing or performing any work. Unstable vehicles may present dangerous conditions and may cause property damage and/or personal injury.

NOTE: Read through all instructions before beginning installation.

Removal

1. Remove muffler and header heatshield.
2. Remove the stock skid plate.
3. Remove the right side cover to access lower muffler mount bolt.

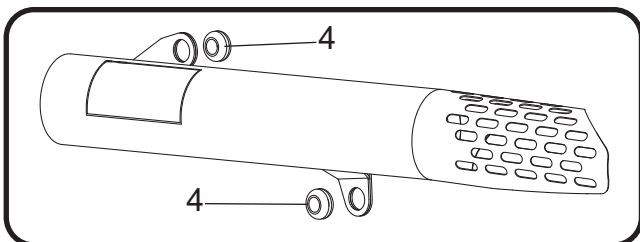
Note: Removal of the right lower silver pipe cover may ease removal/installation of the header but is not required.

4. Remove header nuts.
5. While securely supporting the stock muffler, remove upper muffler mount nut and lower muffler mount bolt and carefully remove the stock muffler assembly.

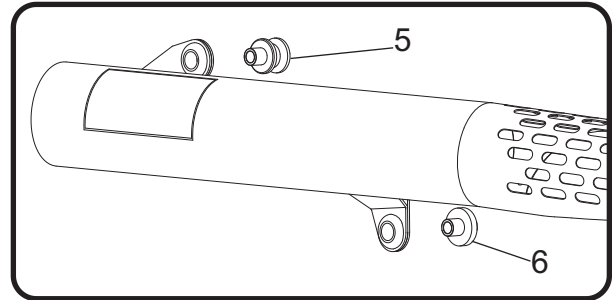
Note: The stock exhaust port gasket will be re-used with the Yoshimura full-system. Inspect and replace gasket if necessary.

Installation

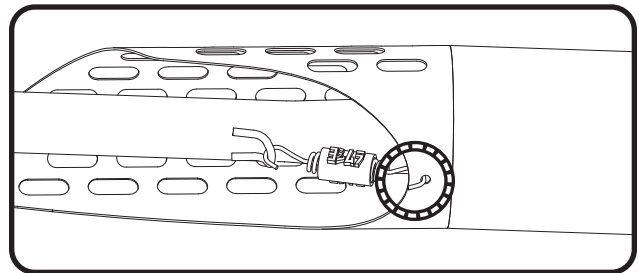
1. Install (No. 1) *12160-401*, header using the stock header nuts. Do not torque at this time.
2. Install (No. 4) *Z1022*, rubber grommets into upper and lower muffler brackets.



3. Install (No. 5) *ALS-031*, upper muffler spacer and (No. 6) *12160-SPCR*, lower muffler spacer.



4. Install (No. 2) *121600K500-RMA*, muffler onto header outlet. Align upper and lower muffler brackets to muffler mount and secure using (No. 7) *8MMWASHERL*, 8mm washer and the stock upper muffler mount nut and lower muffler mount bolt. Torque muffler mount nut and bolt to factory specifications.
5. Torque header nuts to factory specifications.
6. Hook (No. 8) *RACE-SPS-1*, medium exhaust spring onto hole in back of muffler and onto header as shown.



7. Re-install skid plate and right side cover using opposite steps of removal.
8. Install (No. 3) *12160-HS*, heatshield onto header using (No. 9) *RC116HSB-BK-P*, heatshield screws.
9. Before starting vehicle, check for proper clearance between new exhaust system and rear suspension (i.e. tire, swingarm, brakes, rear shock, and etc.) If any problem is found, please carefully follow through the installation steps again. If problem still persists, please call Yoshimura Tech Department at (800) 634-9166 / in CA (909) 628-4722.

10. It is recommended that the muffler and tailpipe be wiped down with rubbing alcohol to remove oil and fingerprints. This will help prevent tarnishing of the finish after the exhaust is heated up.

Note: After starting vehicle, it is normal for new exhaust system and muffler to emit smoke until oil residue burns off.