



YOSHIMURA

RESEARCH&DEVELOPMENT OF AMERICA, INC.

5420 DANIELS STREET STE A, CHINO CA., 91710 · (800) 634-9166 · (909) 628-4722 · FAX (909) 591-2198

www.yoshimura-rd.com

Signature Series

Qualified Manufacturer Declared "Replacement Part"

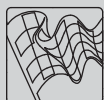
2013~2018

Honda CBR600RR

12281E7220 (CF/CF)

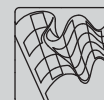
12281E7520 (SS/CF)

RS-5 Stainless Steel Slip-On



Signature Series systems are:

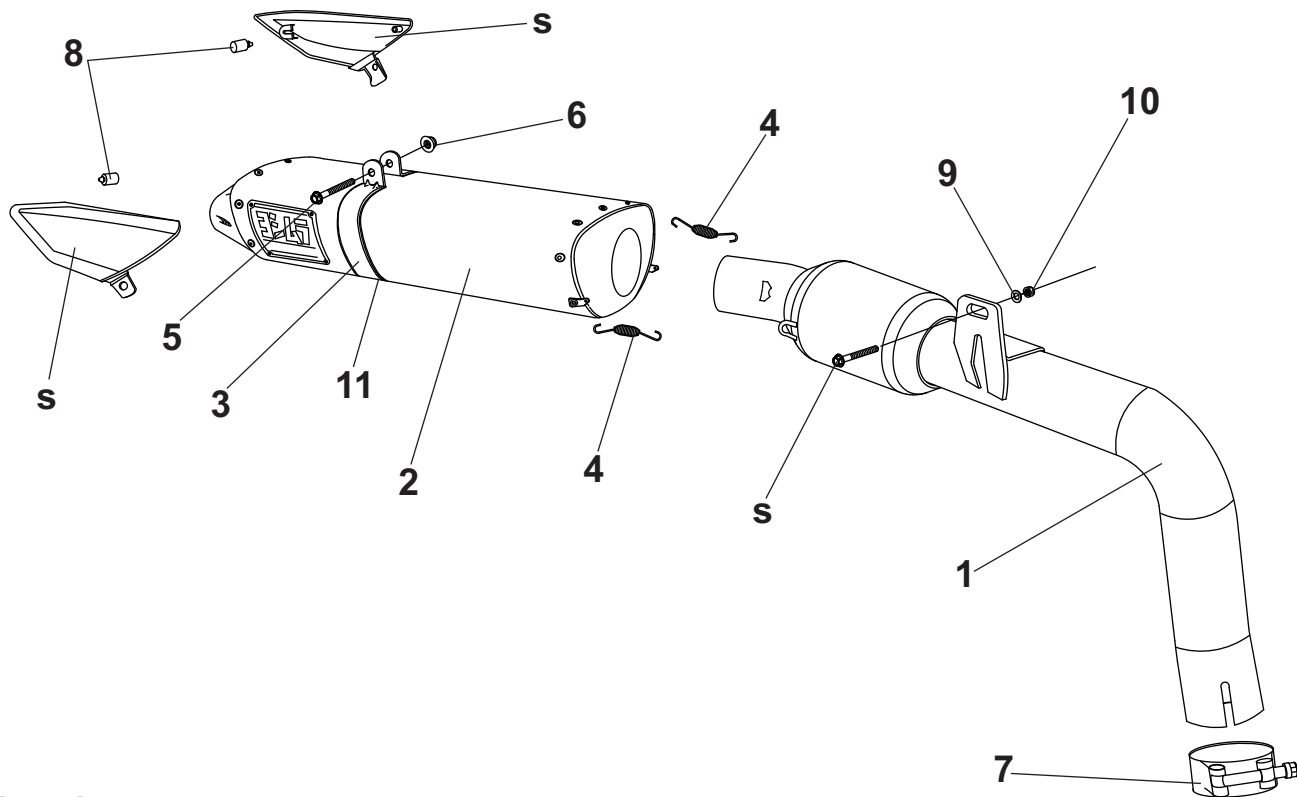
- CARB/EPA tail-pipe emissions compliant.
- Marked with appropriate EPA noise labels.
- Independent laboratory tested for EPA new vehicle noise compliance.



✖ You must know how to remove and replace your stock exhaust in order to install this product otherwise have it installed by a professional mechanic. Keep all stock parts from your existing system as some components may be necessary to install your new Yoshimura exhaust depending on the application. Read through all instructions before beginning installation. Exhaust system can be extremely hot. Let motorcycle cool down before beginning installation. Always wear hand and eye protection and take precautionary measures to avoid injury. ✖

NOTE: IN THE STATE OF CALIFORNIA, IT IS ILLEGAL TO MODIFY THE EMISSION CONTROL SYSTEM, WHICH INCLUDES THE CARBURETORS OF ANY VEHICLE.

Assembly Diagram



S = Stock

NO.	DESCRIPTION	QTY	PART #
1	Yoshimura Tailpipe	1	12281-435
2	Yoshimura Signature Series Muffler Assembly with Carbon Fiber Sleeve	1	****
	with Stainless Steel Sleeve		****
3	Muffler Clamp	1	1227-MPC(X)
4	Medium Exhaust Spring	2	RACE-SPS-1
5	8mm x 65mm Flanged Hex Bolt	1	M8X65H-F
6	8mm Nut	1	8MMNUT
7	Stainless Steel Exhaust Clamp	1	27-62MSH
8	Rubber Bumper	2	4284-034
9	6MM Flat Washer	1	6MMWASHER
10	6MM Nylon Lock Nut	1	6MMLN
11	Muffler Clamp Heat Insulator	1	HT SHLDTRS
**	Adhesive Back Foil Heatshield (8" X 16")	2	1200-00-01
**	Spring Puller	1	ST-200
**	Yoshimura Vinyl Sticker	1	17029

(X) Used for stainless steel muffler canisters.

**** Signature Series muffler replacement part number unavailable. Repair or replacement of Signature Series exhaust systems is only available directly through Yoshimura R&D of America, Inc.

Removal

1. Remove rider and passenger seat.
2. Remove passenger seat cowl by removing the four bolts securing rear cowl to subframe. Pull cowl up and toward the rear to remove. Remove muffler heatshield bolt at the same time.
3. Disconnect the license plate light and turn signal wires.
4. Remove the four bolts securing the stock fender assembly to subframe and carefully remove the stock fender assembly.
5. Remove right rearset assembly by removing the bolts shown below.

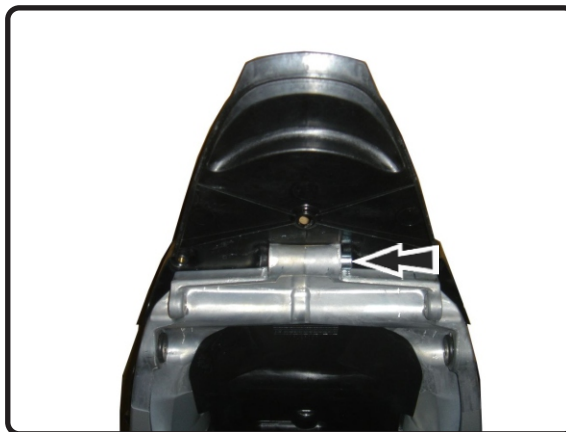


6. Remove right side passenger footpeg bracket.
7. Remove the stock metal tailpipe heatshield.
8. Remove the two muffler mount bolts securing the stock muffler assembly to subframe.
9. Loosen the stock exhaust clamp located behind right rearset and carefully remove the stock muffler assembly and stock muffler heatshield.

Note¹: The stock tailpipe exhaust gasket will not be used with the Yoshimura exhaust system.

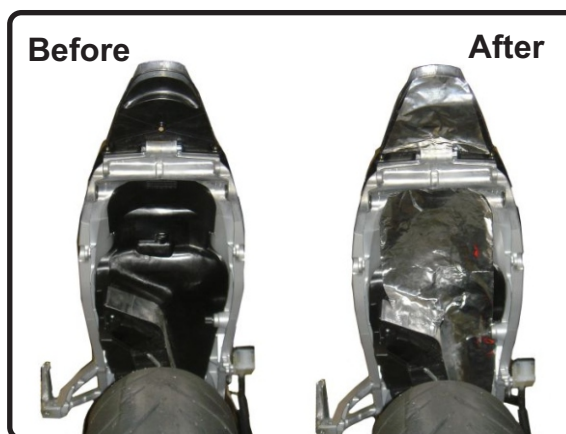
Note²: The stock muffler heatshield will not be used with the Yoshimura exhaust system.

10. Remove the rear center subframe bolt as shown. Yoshimura muffler will be mounted to this location.



11. Cut out the supplied heatshield template and follow instructions on template.

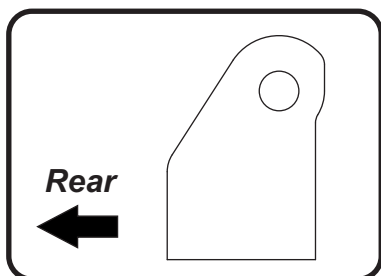
Note: Use rubbing alcohol to clean the surface where the heatshield will be applied.



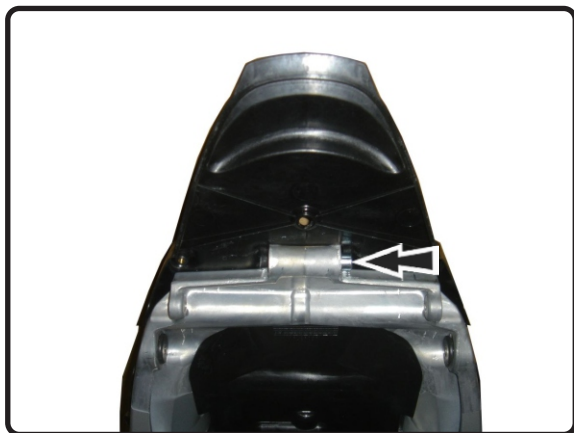
12. Remove (No. 4) *RACE-SPS-1*, medium exhaust spring and separate (No. 2) *Yoshimura muffler* from (No. 1) *12281-435*, tailpipe.
13. Install (No. 7) *27-62MSH*, exhaust clamp over (No. 1) *12281-435*, tailpipe inlet.
14. Install (No. 1) *12281-435*, tailpipe inlet over the stock header outlet.
15. Secure (No. 1) *12281-435*, tailpipe chassis mount to chassis using the stock bolt, (No. 9) *6MMWASHER*, washer, and (No. 10) *6MMLN*, nut. See diagram for proper orientation and order of hardware. Do not torque at this time.
16. Install (No. 2) *Yoshimura muffler* onto (No. 1) *12281-435*, tailpipe outlet and re-install (No. 4) *RACE-SPS-1*, medium exhaust springs.
17. Install (No. 11) *HT SHLDTRS*, muffler clamp heat insulator onto (No. 3) *1227-MPC(X)*, muffler clamp.

18. Install (No. 3) 1227-MPC(X), muffler clamp over (No. 2) Yoshimura muffler.

Note: (No. 3) 1227-MPC(X), muffler clamp is directional. See below for proper orientation.



19. Align muffler clamp mount to rear center subframe and secure using (No. 5) M8X65H-F, bolt and (No. 6) 8MMNUT, flange nut. Torque to 24.4 Nm (2.4 kg-m, 18 ft-lb).



20. Torque tailpipe chassis mount bolt to factory specification.
21. Torque (No. 7) 27-62MSH, exhaust clamp to 8.5 Nm (0.86 kg-m, 6 ft-lb).
22. Re-install the stock metal tailpipe heatshield, right rearset, passenger footpeg bracket, stock fender assembly, rear cowl, rider and passenger seat using the reverse steps of removal.
23. Install (No. 8) 4284-034, rubber bumpers into the stock left and right plastic muffler heatshield.
24. Before starting motorcycle, check for proper clearance between new exhaust system and rear suspension (i.e. tire, swing arm, brakes, rear shock, and etc.) If any problem is found, please carefully follow through the installation steps again.

If problem still persists, please call Yoshimura Tech Department at (800) 634-9166 / in CA (909) 628-4722.

25. It is recommended that the muffler and tailpipe be wiped down with rubbing alcohol to remove oil and fingerprints. This will help prevent tarnishing of the finish after the exhaust is heated up.

Note: After starting motorcycle, it is normal for new exhaust system and muffler to emit smoke until oil residue burns off.

NOISE EMISSION WARRANTY

Yoshimura warrants that this exhaust system, at time of sale, meets all applicable U.S. E.P.A. Federal noise standards. This warranty extends to the first person who buys this exhaust system for purposes other than resale, and to all subsequent buyers. Warranty claims should be directed to Yoshimura R&D of America, Inc.
5420 Daniels St. Chino, CA 91710 | Tel (800) 634-9166

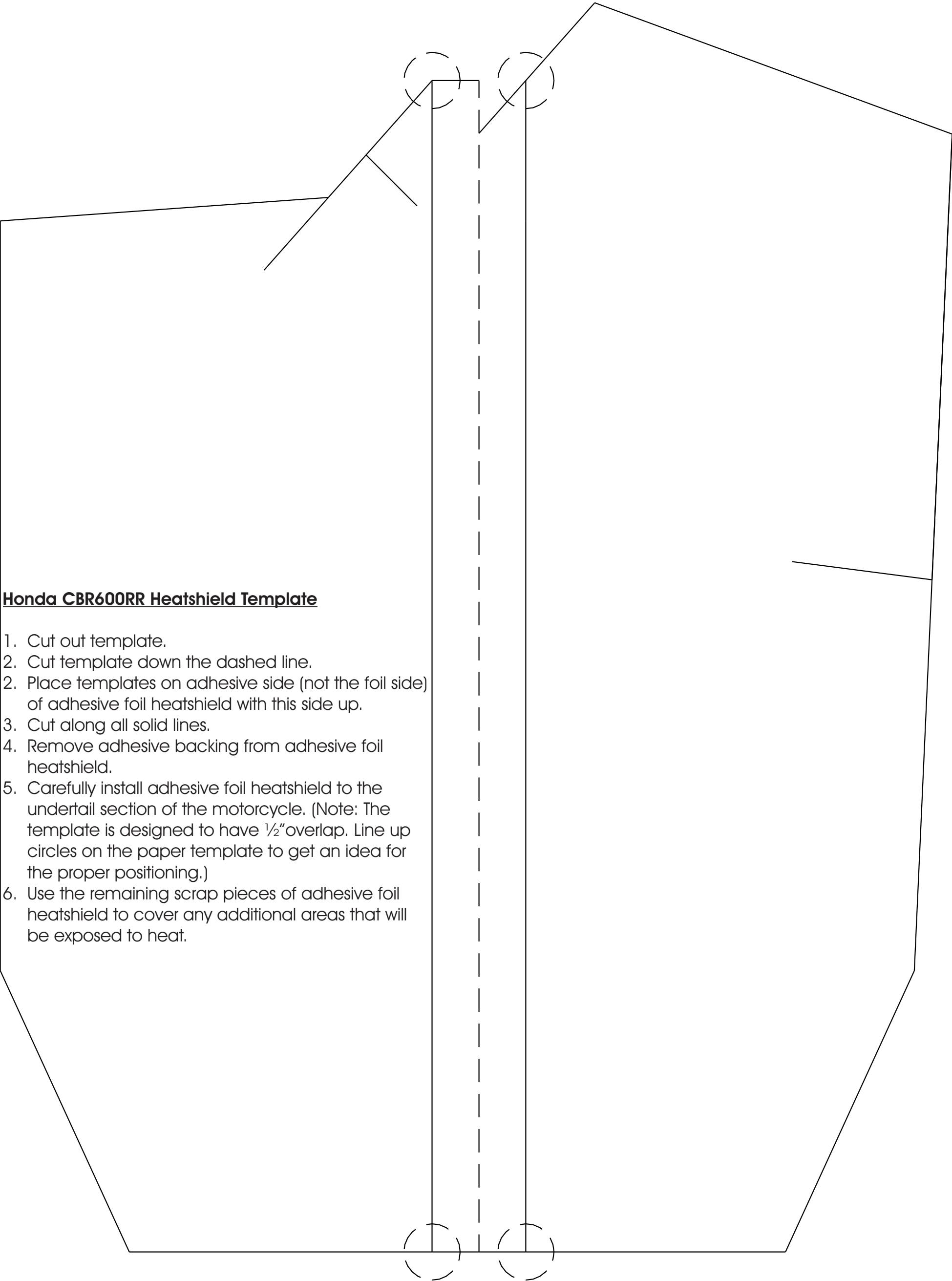
TAMPERING PROHIBITION

Federal law prohibits any modification to this exhaust system which causes the motorcycle to exceed the Federal noise standard. Use of the motorcycle with such a modified exhaust system is also prohibited.

Acts likely to constitute tampering include removal or puncturing the muffler, baffles, header pipes, or any other component which conducts exhaust gases.

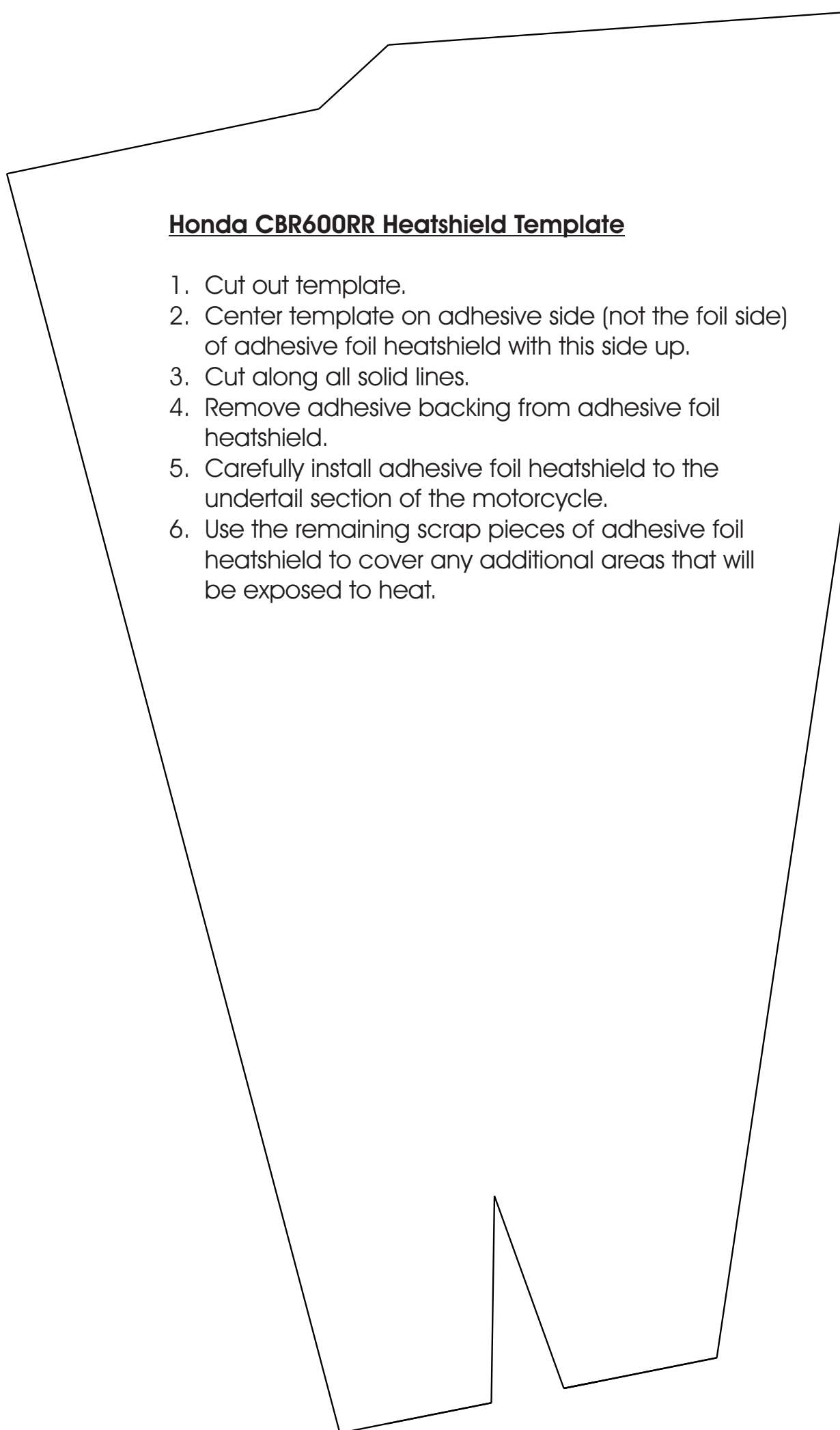
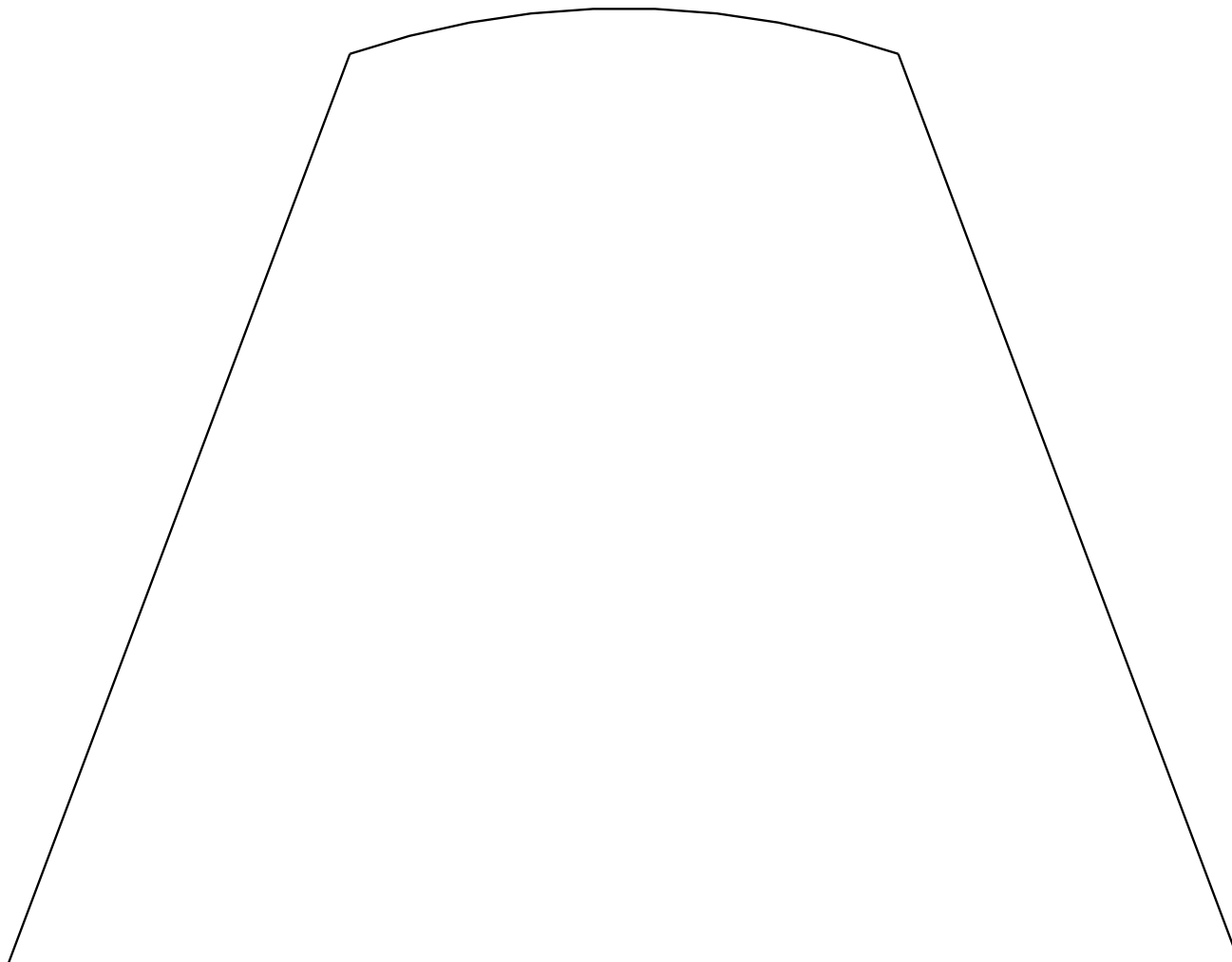
WARNING: This product should be checked for repair or replacement if the motorcycle noise has increased significantly through use. Otherwise, the owner may become subject to penalties under state and local ordinances.

This Page Has Been Left
Blank Intentionally



Honda CBR600RR Heatshield Template

1. Cut out template.
2. Cut template down the dashed line.
2. Place templates on adhesive side (not the foil side) of adhesive foil heatshield with this side up.
3. Cut along all solid lines.
4. Remove adhesive backing from adhesive foil heatshield.
5. Carefully install adhesive foil heatshield to the undertail section of the motorcycle. (Note: The template is designed to have ½" overlap. Line up circles on the paper template to get an idea for the proper positioning.)
6. Use the remaining scrap pieces of adhesive foil heatshield to cover any additional areas that will be exposed to heat.





Dear Yoshimura Customer,

Congratulations and thank you for purchasing a Yoshimura Exhaust System. Over six decades of experience in research and development, state of the art machinery, materials and craftsmanship of the highest quality all come together in a product of exceptional quality and performance—in other words, this is the best thing you can put on your bike.

We strive to provide you with a product perfect in fit and finish. However, if you have any problems, please give us a call. We have found that most fitment issues can be easily resolved by a conversation with one of our knowledgeable and friendly staff. If the issue cannot be resolved this way, our warranty evaluation program may be the answer. Please take a moment to review our recommendations for the care of your exhaust and our warranty information.

PLEASE NOTE: If you have any doubts about your exhaust: **DO NOT START THE MOTORCYCLE! ONCE AN EXHAUST HAS BEEN USED OR MODIFIED, IT CANNOT BE RETURNED FOR CREDIT OR EXCHANGE.**

EXHAUST SYSTEM MAINTENANCE

Yoshimura Exhaust Systems require very little care and maintenance; here are a few tips:

1. Use mild car/motorcycle soap to clean the exhaust system—do not use any abrasives or degreasers.
2. Clean your exhaust with metal/stainless polish every 1-2 months to retain the luster and remove dirt and grime. (DO NOT USE POLISH ON “WORKS FINISH” SYSTEMS)
3. Avoid contaminating exhaust surfaces when hot.
4. Your exhaust system will change color (blue, magenta, purple, and/or gold) due to heat; this is normal.
5. Keep all clamps, bolts and other fasteners tight as exhaust systems are susceptible to vibration damage.
6. If you ride in coastal regions or areas that use salt to control ice and snow, wipe the exhaust down after it cools to remove any possible salt residue, which can result in rusting.
7. If you are storing your motorcycle for the season, wipe the exhaust system down with rubbing alcohol before storage.
8. Head pipes glowing (visible in normal light) may indicate an excessively lean condition that must be corrected.

CARBON FIBER:

Carbon fiber equipped exhaust components require special attention. The following addresses wear issues directly related to carbon fiber:

1. Keep all clamps, bolts and other fasteners tight. Carbon Fiber is very susceptible to vibration damage.
2. Keep all chemicals and solvents away from the carbon fiber, as they will damage the finish.
3. High temperatures will cause the resin in the carbon fiber to break down. Visual signs such as an amber hue in the resin may be early signs of heat damage to carbon fiber.
4. Upon seeing amber colored resin, discontinue use. The exhaust system needs to be inspected by a representative from Yoshimura, for repack, and/or repair. Continued use will cause component failure.

STAINLESS STEEL:

Stainless Steel is not rust proof but is less prone to rusting, staining and pitting; but it is prone to oxidation like all metals.

WORKS FINISH:

1. Works Finish exhaust systems should never be cleaned with abrasives or polishes.
2. Yoshimura recommends using “Bar Keepers Friend” cleaner to remove minor stains.
3. Surface reconditioning services are available to remove scratches and undesirable discoloration due to extreme heat. Contact Yoshimura Tech Department at (800) 634-9166 / in CA (909) 628-4722 for more information.

RE-PACKING TIPS

To maintain maximum sound and engine performance the muffler packing will need to be replaced at some time during the muffler's life. Yoshimura recommends repacking your muffler at least once a year.

Failure to maintain the muffler packing may cause damage to the muffler and/or void the warranty. Regularly inspect the muffler body for discoloration, cracks, rattling, or other signs of wear caused by depleted muffler packing. If muffler packing is determined to be depleted or worn, a Yoshimura muffler re-pack kit is highly recommended to restore the muffler to optimum maximum performance.

Yoshimura offers a 3-5 day turn around (plus transit time) to inspect and refurbish used and damaged mufflers.

For more information on muffler repacking please visit our website at: <https://www.yoshimura-rd.com/pages/repack-and-insert-chart>

*****PRO TIP***** Before you install your new muffler for the first-time log the weight in your Owner's or Service manual along with the current hours or mileage on your vehicle. When you are performing periodic maintenance on your vehicle (like a tire change, or an oil change) you can remove your Yoshimura muffler from the vehicle and weigh it again. Over time, the packing material inside your muffler will burn off with use, and the muffler will need to be repacked. When the weight loses approximately 100 grams of the original weight, you should consider getting your Yoshimura muffler repacked. You can order repacking kit or the parts to repack the muffler from the Yoshimura website, or your local dealer. You can also contact the Yoshimura sales office and arrange to send in your muffler for the repacking service too.

IMPORTANT TECHNICAL NOTE

Yoshimura recommends on all race exhaust systems, that all spring joints be safety wired. Recommended wire type 304/316 stainless steel with a .032" diameter should be used.

YOSHIMURA EXHAUST LIMITED WARRANTY

All Yoshimura R&D of America, Inc., exhaust systems carry a one-year limited warranty against defects in workmanship and/or materials.

WHO IS COVERED?

This warranty is provided to the original purchaser of the exhaust system.

WHAT VOIDS THE WARRANTY?

1. Abuse, misuse, improper installation and/or modifications
2. Custom applications
3. No proof of purchase at the time of warranty. Claimant must provide proof of purchase (original receipt or invoice) and a warranty authorization number (RMA) obtained from Yoshimura.
4. Finishes such as plating or painted surfaces with discoloration or rust due to inclement weather conditions, exposure to salt, exposure to chemicals, or lack of maintenance by the customer are not covered.
5. International grey-market product purchased through a dealer/distributor not authorized for your country will not be supported by this warranty.

EXTENT OF WARRANTY:

Any defective exhaust system properly returned to Yoshimura will be repaired or replaced by Yoshimura. Yoshimura is not responsible for any other expense incurred by the customer under the terms of this limited warranty, nor is Yoshimura responsible for any damages either consequential, incidental, special, contingent or otherwise; or expenses or injury arising directly or indirectly from the use of the exhaust system. Any exhaust system returned to Yoshimura must be sent at the customer's expense along with the proof of purchase and warranty authorization (RMA). Yoshimura reserves the right to determine whether the terms of the warranty, set out above, have been properly followed. In the event that the terms are not followed this warranty is void. Yoshimura is the sole determiner of abuse, misuse,

installation errors and modifications—should any of these be found, this warranty is void. The duration of any and all implied warranties are limited to the duration of the express warranty. All incidental or consequential damages are hereby excluded. The warranty gives you specific legal rights and you may have other rights, which vary from state to state. Some states do not allow the exclusion or limitation of incidental or consequential damages or limitations on how long an implied warranty lasts, so the above limitations and exclusions may not apply to you.

If you have a fitment or other problem, or are missing a part, please double-check this trouble shooting guide first:

1. Reference your instruction sheet and double-check all drawings and instructions
2. Make sure muffler clamps are installed correctly (refer to instructions diagram). On many models, there is a right and wrong way to install. Also verify part numbers on headers and tail pipe.
3. Always make sure to install spring-mounted manifolds and flanges on cylinder head prior to installing headers.
4. Always take time to examine problems in detail.
5. When all else fails, call our technical support line at (909) 628-4722. The technical line is open 9:00am – 4:30pm Monday through Friday, Pacific Time. Please have the following information handy: Year/Make/Model of motorcycle, date of purchase, place of purchase, batch dates and part numbers (found on header and tail-pipe components).
6. Also, feel free to ask through online e-mail at sales@yoshimura-rd.com, or fax your question/problems to (909) 591-2198.

To obtain technical information directly from Yoshimura, call (909) 628-4722.