



YOSHIMURA

RESEARCH&DEVELOPMENT OF AMERICA, INC.

5420 DANIELS STREET STE A, CHINO CA 91710 · (800) 634-9166 · (909) 628-4722 · FAX (909) 591-2198

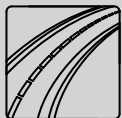
WWW.YOSHIMURA-RD.COM

Street Series

Qualified Manufacturer Declared "Replacement Part"

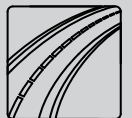
**2019~2025
Kawasaki Ninja ZX-6R
14642CP522 (SS/CF)**

AT2 Stainless Steel 3/4 System



All Street Series systems are:

- Slip-on/Bolt-on applications that do not require tampering with the vehicle's emissions control system.
- CARB/EPA tail-pipe emissions compliant.
- Marked with appropriate EPA noise labels.
- Not tested for EPA new vehicle noise compliance.

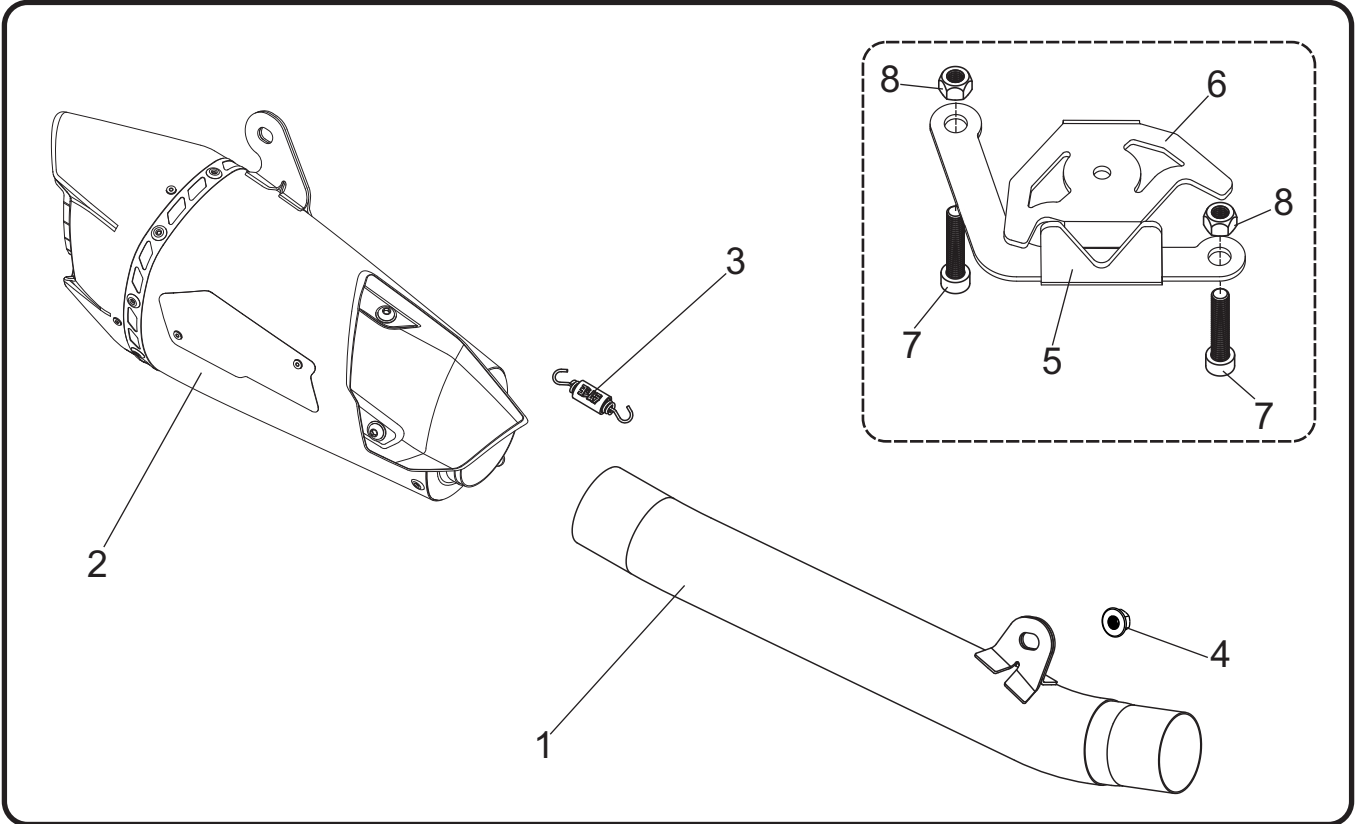


You must know how to remove and replace your stock exhaust in order to install this product otherwise have it installed by a professional mechanic. Keep all stock parts from your existing system as some components may be necessary to install your new Yoshimura exhaust depending on the application. Read through all instructions before beginning installation. Exhaust system can be extremely hot. Let motorcycle cool down before beginning installation. Always wear hand and eye protection and take precautionary measures to avoid injury.



NOTE: IN THE STATE OF CALIFORNIA, IT IS ILLEGAL TO MODIFY THE EMISSION CONTROL SYSTEM, WHICH INCLUDES THE CARBURETORS OF ANY VEHICLE.

Assembly Diagram



No.	Item	Description	Qty.
1	14642-435D	Yoshimura Tailpipe	1
2	14642CP521-RMA	Yoshimura Muffler Assembly	1
3	RACE-SPS-1	Medium Exhaust Spring	1
4	10MMFNUT	10mm Flange Nut	1
5	14642-CKRBRKT	Servo Motor Bracket	1
6	1462-CKRPLT	Servo Motor Stopper Plate	1
7	M6X30	6mm x 30mm Socket Head Cap Bolt	2
8	6MMLN	6mm Nylon Lock Nut	2
**	INS-20-K	Low Volume Sound Insert	1
**	ST-200	Spring Puller Tool	1
**	17100	Yoshimura Sticker Sheet	1

** Not shown on diagram.

CAUTION: Exhaust system can be extremely hot. Let motorcycle cool down before beginning installation. Always wear hand and eye protection and take precautionary measures to avoid injury.

WARNING: Always properly support vehicle with a stand and/or lift when servicing or performing any work. Unstable vehicles may present dangerous conditions and may cause property damage and/or personal injury.

NOTE: Read through all instructions before beginning installation.

Removal

1. Remove the muffler heatshield to access exhaust valve cables.
2. Remove exhaust valve cables from muffler.
3. Loosen muffler exhaust clamp between pre-muffler chamber and muffler.
4. While securely supporting the stock muffler, remove the muffler mount bolt and carefully remove the stock muffler assembly.
5. Remove pre-muffler chamber heatshield. Loosen exhaust clamp between header and pre-muffler chamber. Remove pre-muffler chamber chassis mount bolt and carefully remove the pre-muffler chamber.

Note¹: Due to limited space, it may be necessary to loosen header nuts to ease removal of the pre-muffler chamber. If further clearance is required, place motorcycle on rear stand and loosen rear axle to move rear wheel back until there is sufficient clearance to remove the pre-muffler chamber.

Note²: The stock exhaust gasket between header and pre-muffler chamber will be re-used with the Yoshimura 3/4 system. Inspect and replace if necessary.

6. Remove passenger seat to access exhaust valve servo motor.

Note: Do not turn on ignition switch while performing work on the exhaust valve servo motor. Doing so may cause error lights to illuminate on the dash if the following steps have not been completed.

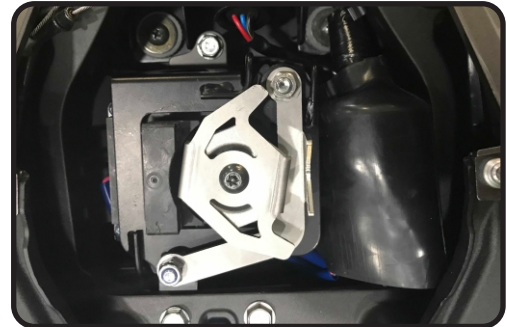
7. Remove exhaust valve cable retaining clip and carefully remove exhaust valve cables.

Note: Exhaust valve cables will not be used with the Yoshimura 3/4 system.

8. Remove the two bolts securing servo motor bracket to chassis. Turn servo motor over and remove the two stock 6mm x 25mm bolts securing servo motor to servo motor bracket. Replace with (No. 7) *M6X30*, 6mm x 30mm socket head cap bolts supplied in the kit.
9. Re-install the servo motor bracket and secure to chassis using the two stock bolts.

Installation

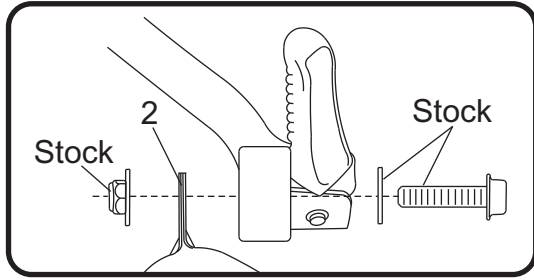
1. Install (No. 5) *14642-CKRBRKT*, servo motor bracket on top of stock servo motor and secure using (No. 8) *6MMLN*, 6mm nylon lock nuts as shown.



2. Firmly hold servo pulley in place and remove tamper proof torx bolt using the proper torx bit. Install (No. 6) *1464-CKRPLT*, servo motor stopper plate on top of the stock pulley as shown above and secure using the stock torx bolt.

Note: Use a wrench to firmly hold the servo pulley when loosening and tightening the stock torx bolt to prevent damage to servo motor.

3. Using the stock exhaust gasket, install (No. 1) *14642-435D*, tailpipe into stock header outlet. Align tailpipe chassis mount bracket to the front side of chassis mount and secure using the stock pre-muffler chassis mount bolt and (No. 4) *10MMFNUT*, 10mm flange nut. Do not torque at this time.
4. Install (No. 2) *14642CP521-RMA*, muffler onto (No. 1) *14642-435D*, tailpipe outlet. Align muffler bracket to the back side of muffler mount and secure using the stock bolt, washer, and nut. Torque to factory specification.



5. Torque stock tailpipe chassis mount bolt to factory specification.
6. Install (No. 3) *RACE-SPS-1*, medium exhaust spring between muffler and tailpipe using the supplied *ST-200*, spring puller tool.
7. Torque stock header exhaust clamp to factory specification.
8. Turn ignition to the on position and check for proper function of servo stopper bracket and make sure both inside ends of the stopper plate hits the servo motor bracket when it cycles.
9. Re-install passenger seat.
10. Before starting vehicle, check for proper clearance between new exhaust system and rear suspension (i.e. tire, swingarm, brakes, rear shock, and etc.) If any problem is found, please carefully follow through the installation steps again. If problem still persists, please call Yoshimura Tech Department at (800) 634-9166 / in CA (909) 628-4722.
11. It is recommended that the muffler and tailpipe be wiped down with rubbing alcohol to remove oil and fingerprints. This will help prevent tarnishing of the finish after the exhaust is heated up.

Note: After starting vehicle, it is normal for new exhaust system and muffler to emit smoke until oil residue burns off.

Works Finish Care & Maintenance

Before starting vehicle, clean pipe thoroughly using a soft cloth and rubbing alcohol to remove any oil and finger prints.

The color of the exhaust will change once the system has gone through a heat cycle of 15 minutes or more. Color will vary depending on lean/rich conditions.

Clean using a soft cloth and soap. Do not use abrasive materials as it will scratch the surface.

Surface reconditioning services are available to remove scratches and undesirable discoloration due to extreme heat. Contact Yoshimura Tech Department at (800) 634-9166 / in CA (909) 628-4722 for more information.