



YOSHIMURA

RESEARCH & DEVELOPMENT OF AMERICA, INC.

5420 DANIELS STREET STE A, CHINO CA 91710 · (800) 634-9166 · (909) 628-4722 · FAX (909) 591-2198

WWW.YOSHIMURA-RD.COM

Signature Series

Qualified Manufacturer Declared "Replacement Part"

Yamaha

**2014-2017
YZ250F**

**2015
YZ250FX**

**2015-2016
WR250F**

231010D321 (SS/AL)

231011D221 (Ti/CF)

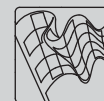
231011D721 (Ti/Ti)

RS4 Full-System Exhaust



Signature Series systems are:

- CARB/EPA tail-pipe emissions compliant.
- Marked with appropriate EPA noise labels.
- Independent laboratory tested for EPA new vehicle noise compliance.

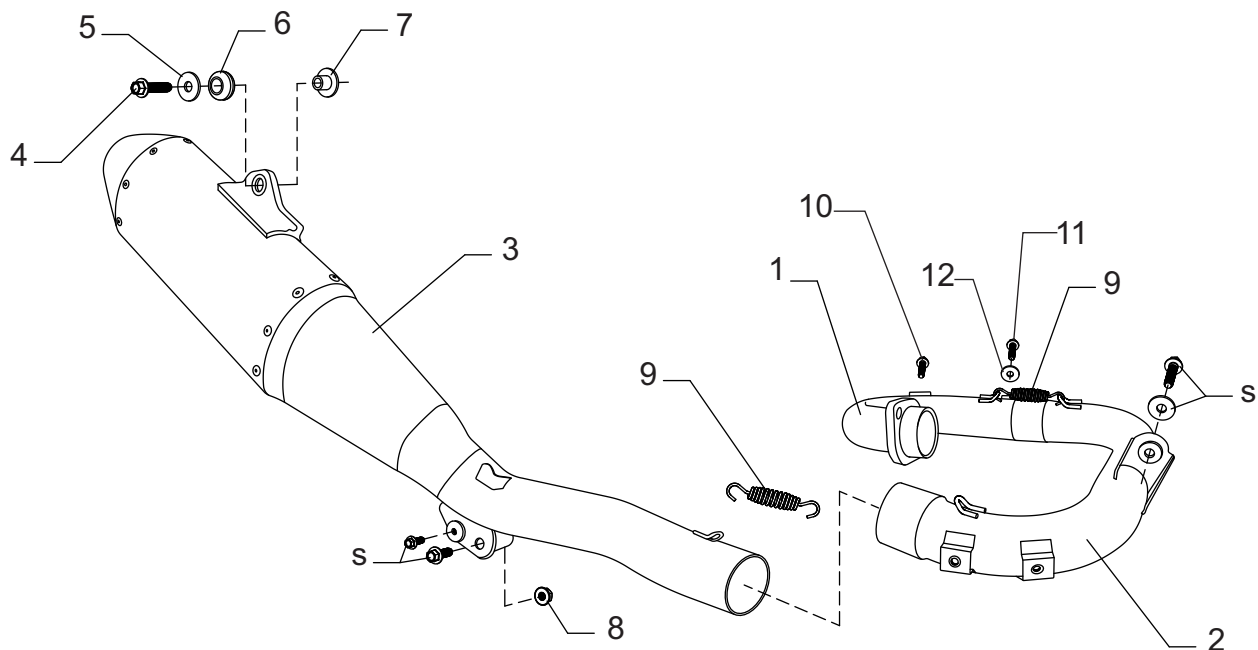


CAUTION: The muffler packing on this system **MUST** be replaced every 6-8 hours of use, or every 1-2 motos. Failure to follow recommended muffler re-packing interval can cause muffler damage and may void the warranty.



NOTE: IN THE STATE OF CALIFORNIA, IT IS ILLEGAL TO MODIFY THE EMISSION CONTROL SYSTEM, WHICH INCLUDES THE FUEL INJECTION OF ANY VEHICLE.

Assembly Diagram



No.	Item	Description	Qty.
1	23101-101	Stainless Steel Yoshimura Header	1
	23101-704F	Titanium Yoshimura Header	
2	23101-140	Stainless Steel Yoshimura Midpipe	1
	23101-740	Titanium Yoshimura Midpipe	
3	231012D320-RMA	SS/AL Muffler Assembly	1
	231011D220-RMA	Ti/CF Muffler Assembly	
	231011D720-RMA	Ti/Ti Muffler Assembly	
4	M8X35H	8mm x 35mm Flanged Hex Head Bolt	1
5	8MMWASHERL	8mm Large Washer	1
6	Z1022	Rubber Grommet	1
7	ALS-003	Aluminum Spacer	1
8	8MMNUT	8mm Flange Nut	1
9	RACE-SPS-1	Medium Spring	2
10	M6X10BHS	6mm x 10mm Button Head Screw	1
11	M6X12BHS	6mm x 12mm Button Head Screw	1
12	6X14X5SPCR	Aluminum Spacer	1
**	INS-10-K	Low Volume Insert (1.625")	1
**	ALFOILHS-8X10	Adhesive Heatshield Foil	1
**	ST-200	Spring Puller Tool	1
**	347PLUG	Wash Plug	1
**	17029	Sticker Kit Sheet	1
***	RACE-SPX-2	Small Spring	2
OPTIONAL REPLACEMENT PARTS (not incl.)			
****	SA-04-K	Spark Arrester Kit (Required for WR250F)	

** Not shown on diagram.

*** Only used on Titanium Full-System on header flange.

****Spark Arrester Kit **MUST** be installed if to be used on WR250F for USFS compliance. Not recommended to be used with carbon fiber canisters.

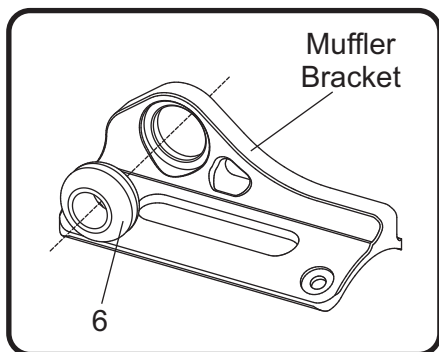
Removal

1. Remove right side panel by removing the three side panel bolts.
2. Loosen exhaust clamp at muffler to midpipe connection.
3. Remove forward muffler chassis mount bolt.
4. While securely supporting the stock muffler assembly, remove rear muffler mount bolt and carefully remove muffler from midpipe.
5. Loosen exhaust clamp at midpipe to header connection.
6. Remove midpipe support bracket bolt and carefully remove midpipe from header.
7. Remove the two header nuts and carefully remove the stock header.

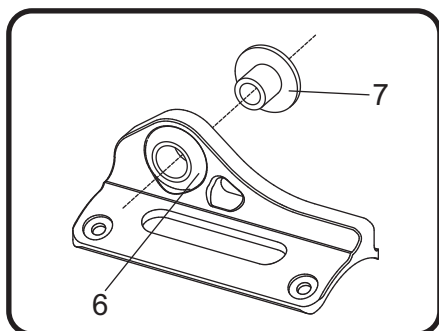
Note: The stock header gasket will be re-used with the Yoshimura full-system. Inspect and replace if necessary.

Installation

1. Install (6) Z1022 rubber grommet into muffler bracket.



2. Install (7) ALS-003 aluminum spacer into (6) Z1022 rubber grommet as shown in the diagram.



3. Install (1) 23101-101/704F header using the stock exhaust port gasket and stock header nuts. Do not torque at this time.
4. Carefully install (2) 23101-140/740 midpipe by maneuvering between the frame and motor and slide midpipe inlet over header. Secure midpipe to midpipe support bracket using the stock bolt. Do not torque at this time.
5. Install (3) XXXXXXXXXX-RMA Yoshimura muffler assembly over (2) 23101-140/740 midpipe.
6. Secure (3) XXXXXXXXXX-RMA Yoshimura muffler assembly to rear muffler mount using the provided (4) M8X35H bolt and (5) 8MMWASHERL washer as shown in the assembly diagram. Do not torque at this time.
7. Secure Yoshimura forward muffler chassis mount to chassis using the stock bolt and provided (8) 8MMNUT flange nut. Do not torque at this time.
8. Torque (4) M8X35H rear muffler mount bolt to 30 Nm (3.0 kg-m, 22 ft-lb).
9. Torque stock forward muffler mount bolt to 30 Nm (3.0 kg-m, 22 ft-lb).
10. Install (9) RACE-SPS-1 exhaust spring between tailpipe and midpipe.
11. Torque midpipe support bracket bolt to 20 Nm (2.0 kg-m, 14 ft-lb).
12. Install (9) RACE-SPS-1 exhaust spring between header and midpipe.
13. Torque header nuts to 20 Nm (2.0 kg-m, 14 ft-lb).

Note: Titanium Full-System requires exhaust springs to be installed on the flange and header. Install provided RACE-SPX-1 spring on flange and header.

14. Remove the stock short midpipe heatshield and install onto Yoshimura midpipe using the stock heatshield bolts. Remove the stock long header heatshield and install on Yoshimura header using (10) M6X10BHS, (11) M6X12BHS, 6mm screws and (12) 6X14X5SPCR, aluminum spacer.
15. Cut out provided heat shield template along the solid line.

16. Using a marker, trace the paper template onto the provided 8x10 adhesive foil sheet.

Note: When tracing paper template onto foil sheet, be sure both templates fit on the 8x10 adhesive foil sheet before cutting.

17. Cut out heatshield foil.

18. Clean number plate thoroughly with soap and water where heatshield foil will be applied.

19. Remove adhesive backing from foil heatshield and apply to number plate.

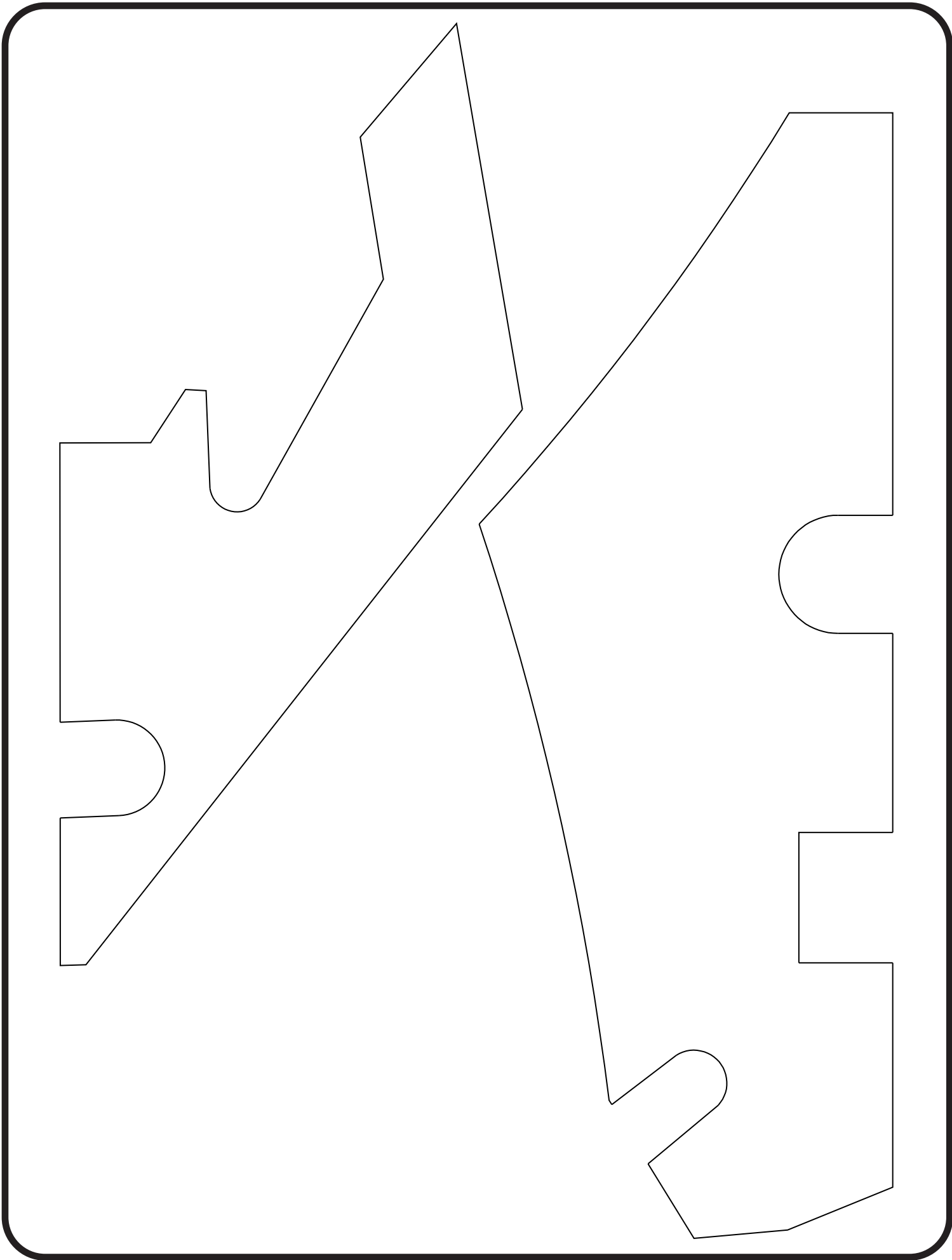
Note: Be sure number plate is dry and clean prior to applying heatshield foil. Debris may hinder the foil from adhering to the surface.

20. Re-install right side panel.

21. Before starting vehicle, check for proper clearance between new exhaust system and rear suspension (i.e. tire, control arm, brakes, rear shock, and etc.) If any problem is found, please carefully follow through the installation steps again. If problem still persists, please call Yoshimura Tech Department at (800) 634-9166 / in CA (909) 628-4722.

22. It is recommended that the muffler and tailpipe be wiped down with rubbing alcohol to remove oil and fingerprints. This will help prevent tarnishing of the finish after the exhaust is heated up.

Note: After starting vehicle, it is normal for new exhaust system and muffler to emit smoke until oil residue burns off.



Dear Yoshimura Customer,

Congratulations and thank you for purchasing a Yoshimura Exhaust System. Over six decades of experience in research and development, state of the art machinery, materials and craftsmanship of the highest quality all come together in a product of exceptional quality and performance—in other words, this is the best thing you can put on your bike.

We strive to provide you with a product perfect in fit and finish. However, if you have any problems, please give us a call. We have found that most fitment issues can be easily resolved by a conversation with one of our knowledgeable and friendly staff. If the issue cannot be resolved this way, our warranty evaluation program may be the answer. Please take a moment to review our recommendations for the care of your exhaust and our warranty information.

PLEASE NOTE: If you have any doubts about your exhaust: **DO NOT START THE MOTORCYCLE! ONCE AN EXHAUST HAS BEEN USED OR MODIFIED, IT CANNOT BE RETURNED FOR CREDIT OR EXCHANGE.**

EXHAUST SYSTEM MAINTENANCE

Yoshimura Exhaust Systems require very little care and maintenance; here are a few tips:

1. Use mild car/motorcycle soap to clean the exhaust system—do not use any abrasives or degreasers.
2. Clean your exhaust with metal/stainless polish every 1-2 months to retain the luster and remove dirt and grime. (DO NOT USE POLISH ON “WORKS FINISH” SYSTEMS)
3. Avoid contaminating exhaust surfaces when hot.
4. Your exhaust system will change color (blue, magenta, purple, and/or gold) due to heat; this is normal.
5. Keep all clamps, bolts and other fasteners tight as exhaust systems are susceptible to vibration damage.
6. If you ride in coastal regions or areas that use salt to control ice and snow, wipe the exhaust down after it cools to remove any possible salt residue, which can result in rusting.
7. If you are storing your motorcycle for the season, wipe the exhaust system down with rubbing alcohol before storage.
8. Head pipes glowing (visible in normal light) may indicate an excessively lean condition that must be corrected.

CARBON FIBER:

Carbon fiber equipped exhaust components require special attention. The following addresses wear issues directly related to carbon fiber:

1. Keep all clamps, bolts and other fasteners tight. Carbon Fiber is very susceptible to vibration damage.
2. Keep all chemicals and solvents away from the carbon fiber, as they will damage the finish.
3. High temperatures will cause the resin in the carbon fiber to break down. Visual signs such as an amber hue in the resin may be early signs of heat damage to carbon fiber.
4. Upon seeing amber colored resin, discontinue use. The exhaust system needs to be inspected by a representative from Yoshimura, for repack, and/or repair. Continued use will cause component failure.

STAINLESS STEEL:

Stainless Steel is not rust proof but is less prone to rusting, staining and pitting; but it is prone to oxidation like all metals.

WORKS FINISH:

1. Works Finish exhaust systems should never be cleaned with abrasives or polishes.
2. Yoshimura recommends using “Bar Keepers Friend” cleaner to remove minor stains.
3. Surface reconditioning services are available to remove scratches and undesirable discoloration due to extreme heat. Contact Yoshimura Tech Department at (800) 634-9166 / in CA (909) 628-4722 for more information.

RE-PACKING TIPS

To maintain maximum sound and engine performance the muffler packing will need to be replaced at some time during the muffler's life. Yoshimura recommends repacking your muffler at least once a year.

Failure to maintain the muffler packing may cause damage to the muffler and/or void the warranty. Regularly inspect the muffler body for discoloration, cracks, rattling, or other signs of wear caused by depleted muffler packing. If muffler packing is determined to be depleted or worn, a Yoshimura muffler re-pack kit is highly recommended to restore the muffler to optimum maximum performance.

Yoshimura offers a 3-5 day turn around (plus transit time) to inspect and refurbish used and damaged mufflers.

For more information on muffler repacking please visit our website at: <https://www.yoshimura-rd.com/pages/repack-and-insert-chart>

*****PRO TIP***** Before you install your new muffler for the first-time log the weight in your Owner's or Service manual along with the current hours or mileage on your vehicle. When you are performing periodic maintenance on your vehicle (like a tire change, or an oil change) you can remove your Yoshimura muffler from the vehicle and weigh it again. Over time, the packing material inside your muffler will burn off with use, and the muffler will need to be repacked. When the weight loses approximately 100 grams of the original weight, you should consider getting your Yoshimura muffler repacked. You can order repacking kit or the parts to repack the muffler from the Yoshimura website, or your local dealer. You can also contact the Yoshimura sales office and arrange to send in your muffler for the repacking service too.

IMPORTANT TECHNICAL NOTE

Yoshimura recommends on all race exhaust systems, that all spring joints be safety wired. Recommended wire type 304/316 stainless steel with a .032" diameter should be used.

YOSHIMURA EXHAUST LIMITED WARRANTY

All Yoshimura R&D of America, Inc., exhaust systems carry a one-year limited warranty against defects in workmanship and/or materials.

WHO IS COVERED?

This warranty is provided to the original purchaser of the exhaust system.

WHAT VOIDS THE WARRANTY?

1. Abuse, misuse, improper installation and/or modifications
2. Custom applications
3. No proof of purchase at the time of warranty. Claimant must provide proof of purchase (original receipt or invoice) and a warranty authorization number (RMA) obtained from Yoshimura.
4. Finishes such as plating or painted surfaces with discoloration or rust due to inclement weather conditions, exposure to salt, exposure to chemicals, or lack of maintenance by the customer are not covered.
5. International grey-market product purchased through a dealer/distributor not authorized for your country will not be supported by this warranty.

EXTENT OF WARRANTY:

Any defective exhaust system properly returned to Yoshimura will be repaired or replaced by Yoshimura. Yoshimura is not responsible for any other expense incurred by the customer under the terms of this limited warranty, nor is Yoshimura responsible for any damages either consequential, incidental, special, contingent or otherwise; or expenses or injury arising directly or indirectly from the use of the exhaust system. Any exhaust system returned to Yoshimura must be sent at the customer's expense along with the proof of purchase and warranty authorization (RMA). Yoshimura reserves the right to determine whether the terms of the warranty, set out above, have been properly followed. In the event that the terms are not followed this warranty is void. Yoshimura is the sole determiner of abuse, misuse,

installation errors and modifications—should any of these be found, this warranty is void. The duration of any and all implied warranties are limited to the duration of the express warranty. All incidental or consequential damages are hereby excluded. The warranty gives you specific legal rights and you may have other rights, which vary from state to state. Some states do not allow the exclusion or limitation of incidental or consequential damages or limitations on how long an implied warranty lasts, so the above limitations and exclusions may not apply to you.

If you have a fitment or other problem, or are missing a part, please double-check this trouble shooting guide first:

1. Reference your instruction sheet and double-check all drawings and instructions
2. Make sure muffler clamps are installed correctly (refer to instructions diagram). On many models, there is a right and wrong way to install. Also verify part numbers on headers and tail pipe.
3. Always make sure to install spring-mounted manifolds and flanges on cylinder head prior to installing headers.
4. Always take time to examine problems in detail.
5. When all else fails, call our technical support line at (909) 628-4722. The technical line is open 9:00am – 4:30pm Monday through Friday, Pacific Time. Please have the following information handy: Year/Make/Model of motorcycle, date of purchase, place of purchase, batch dates and part numbers (found on header and tail-pipe components).
6. Also, feel free to ask through online e-mail at sales@yoshimura-rd.com, or fax your question/problems to (909) 591-2198.

To obtain technical information directly from Yoshimura, call (909) 628-4722.