



YOSHIMURA

RESEARCH & DEVELOPMENT OF AMERICA, INC.

5420 DANIELS STREET STE A, CHINO CA 91710 · (800) 634-9166 · (909) 628-4722 · FAX (909) 591-2198

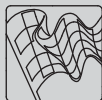
WWW.YOSHIMURA-RD.COM

Signature Series

Qualified Manufacturer Declared "Replacement Part"

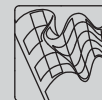
**2025 ~ 2026
Kawasaki KX250
2429505521 (SS/SS)**

RS-12 Stainless Steel Full-System



Signature Series systems are:

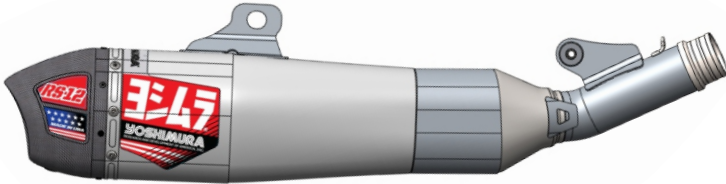
- CARB/EPA tail-pipe emissions compliant.
- Marked with appropriate EPA noise labels.
- Independent laboratory tested for EPA new vehicle noise compliance.



✘ *You must know how to remove and replace your stock exhaust in order to install this product otherwise have it installed by a professional mechanic. Keep all stock parts from your existing system as some components may be necessary to install your new Yoshimura exhaust depending on the application. Read through all instructions before beginning installation. Exhaust system can be extremely hot. Let motorcycle cool down before beginning installation. Always wear hand and eye protection and take precautionary measures to avoid injury.* ✘

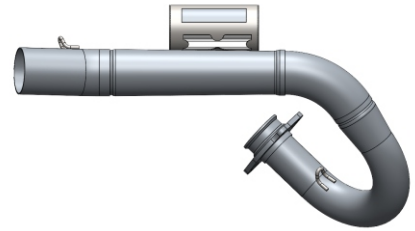
NOTE: IN THE STATE OF CALIFORNIA, IT IS ILLEGAL TO MODIFY THE EMISSION CONTROL SYSTEM, WHICH INCLUDES THE FUEL INJECTION OF ANY VEHICLE.

#1



242950S520-RMA
Yoshimura Muffler

#2



24295-104F
Yoshimura Header

#3



ALS-073
Aluminum Spacer
(for chassis mount)

#4



ALS-043
Aluminum Spacer
(for muffler bracket)

#5



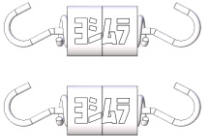
Z1024
Rubber Grommet

#6



RACE-SPS-1
Medium Spring

#7



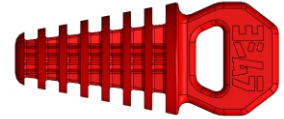
RACE-SPX-2
Short Spring

#8



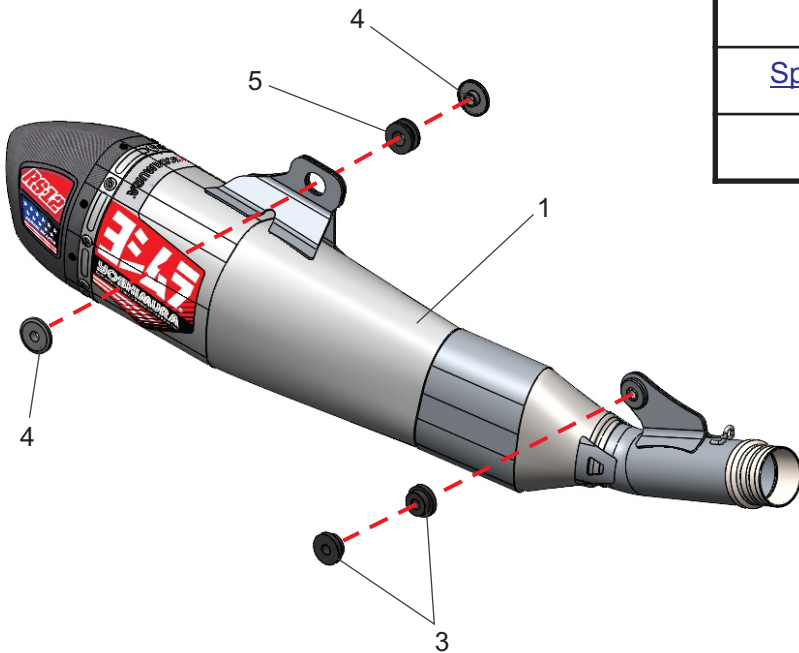
ST-200
Spring Puller Tool

#9



347PLUG
Muffler Wash Plug

Assembly Diagram



Service Parts & Accessories

[Repack Kit](#)
(REPACK-RS12-MX)

[Decal Kit](#)
(RS12-NB011)

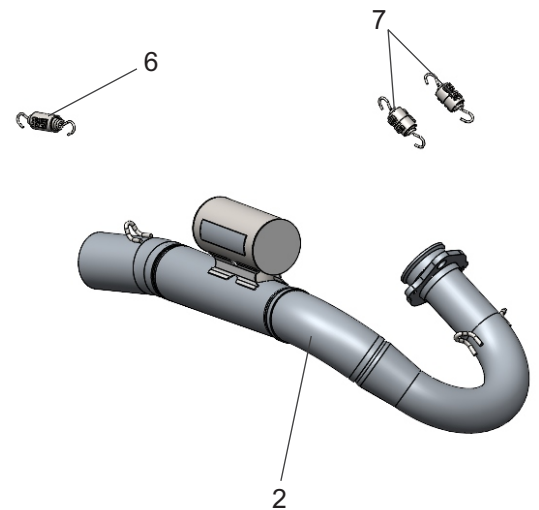
[Endcap Kit](#)
(YM1-CFR-K-1)

[Endcap Insert Plug](#)
(GRMT-RS9)

[Spark Arrester Kit](#)
(SA-21-K) Option

[Sound Insert Kit](#)
(INS-31-K) Installed

[Sound Insert Kit](#)
(INS-39-K) Option



CAUTION: Exhaust system can be extremely hot. Let motorcycle cool down before beginning installation. Always wear hand and eye protection and take precautionary measures to avoid injury.

WARNING: Always properly support vehicle with a stand and/or lift when servicing or performing any work. Unstable vehicles may present dangerous conditions and may cause property damage and/or personal injury.

NOTE: Read through all instructions before beginning installation.

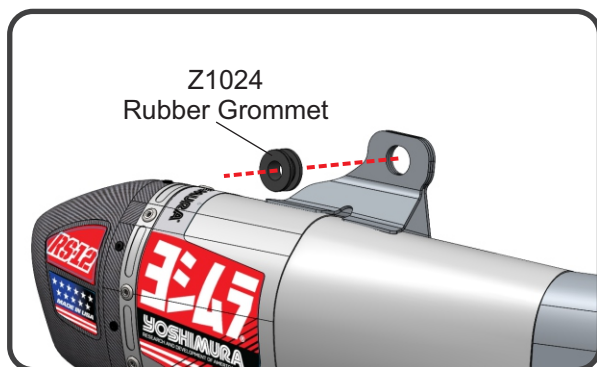
Removal

1. Remove the right side number plate.
2. Loosen exhaust clamp between the stock header and muffler.
3. While securely supporting the stock muffler assembly, remove the muffler chassis mount bolt and muffler mount bolt and carefully remove the stock muffler.
4. Remove the header nuts and remove the stock header.

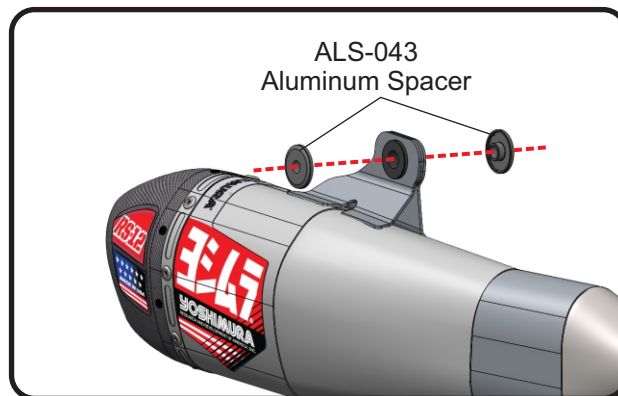
Note: The stock exhaust port gasket will be re-used with the Yoshimura system. Inspect and replace if necessary.

Installation

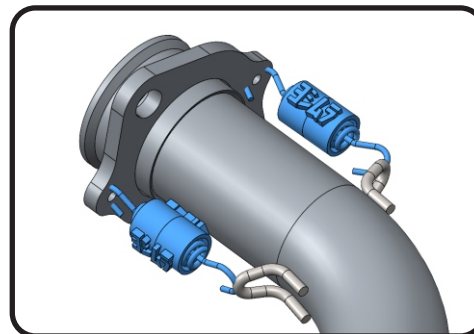
1. Install 24295-104F, header kit using the stock header nuts. Do not torque at this time.
2. Install Z1024, rubber grommet into muffler mount bracket.



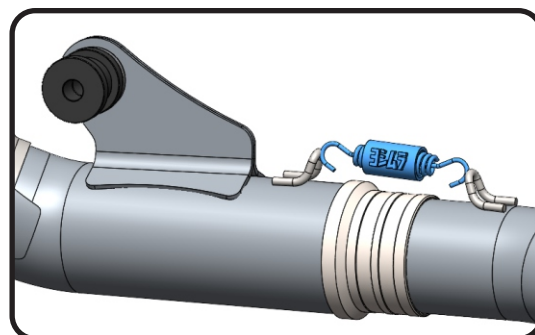
3. Install ALS-043, aluminum spacers into the frontside and backside of Z1024, rubber grommet.



5. Install 242950S520-RMA, muffler onto 24295-104F, header outlet and align muffler mount bracket to muffler mount. Secure muffler mounting bolt and chassis mounting bolt using stock mounting hardware and torque to factory specification.
7. Torque header nuts to factory specification.
8. Using ST-200, spring puller tool provided in the kit, install RACE-SPX-2, short exhaust springs between the flange and the header.



9. Install RACE-SPS-1, medium exhaust spring between the muffler tailpipe and header connection.



10. Re-install right side number plate.

11. Before starting vehicle, check for proper clearance between new exhaust system and rear suspension (i.e. tire, swingarm, brakes, rear shock, and etc.) If any problem is found, please carefully follow through the installation steps again. If problem still persists, please call Yoshimura Tech Department at (800) 634-9166 / In CA (909) 628-4722.
12. It is recommended that the muffler and tailpipe be wiped down with rubbing alcohol to remove oil and fingerprints. This will help prevent tarnishing of the finish after the exhaust is heated up.

Note: After starting motorcycle, it is normal for new exhaust system and muffler to emit smoke until oil residue burns off.

Machined Joint Care & Maintenance

Clean and inspect machined joints when servicing the muffler during regular intervals.



YOSHIMURA

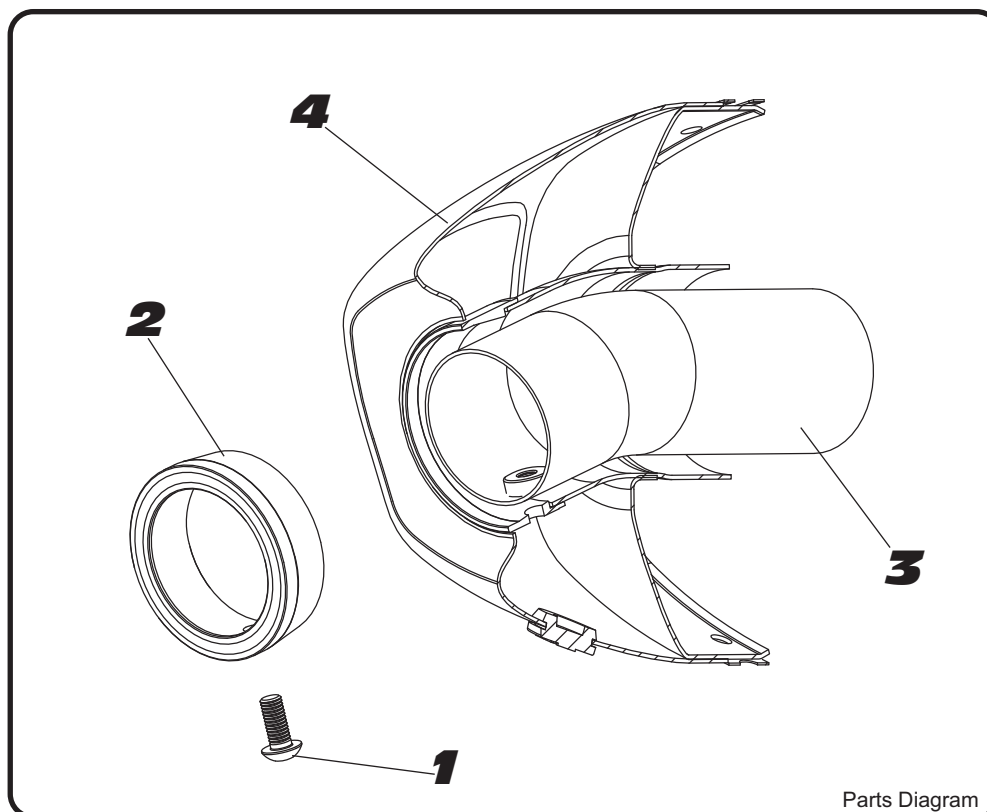
RESEARCH & DEVELOPMENT OF AMERICA, INC.

5420 DANIELS STREET SUITE A, CHINO, CA 91710 · (800) 634-9166 · (909) 628-4722 · FAX (909) 591-2198

www.yoshimura-rd.com

INS-31-K

YOSHIMURA RS12 LOW VOLUME INSERT KIT



Parts Diagram

NO.	DESCRIPTION	QTY	PART #
1	5mm X 12mm Button Head Cap Screw	1	M5X12
2	RS-12 Insert Ring 1.625"	1	YM1-RING-1625
3	Low Volume Sound Insert	1	INS-YM1-1625
4	Yoshimura Exhaust	**	**

- 1 Remove the insert grommet on endcap and remove button head screw securing the aluminum ring and sound insert to the muffler.
- 2 Remove the sound insert from the muffler.
- 3 Inspect the sound insert for cracks or damage and replace if necessary.
- 4 Re-install sound insert and aluminum ring and secure using insert button head screw.
Note: It is recommended that a low strength "Loc-tite" is used on the sound insert securing bolt.