



# YOSHIMURA

RESEARCH & DEVELOPMENT OF AMERICA, INC.

5420 DANIELS STREET STE A, CHINO CA., 91710 · (800)634-9166 · (909)628-4722 · FAX (909)591-2198

[www.yoshimura-rd.com](http://www.yoshimura-rd.com)

## *Signature Series*

Qualified Manufacturer Declared "Replacement Part"

**Kawasaki**

**2024 ~ 2026**

**KX450**

**KX450X**

**2447305521 (SS/SS)**

**RS-12 Stainless Steel Full-System**



Signature Series systems are:

- CARB/EPA tail-pipe emissions compliant.
- Marked with appropriate EPA noise labels.
- Independent laboratory tested for EPA new vehicle noise compliance.

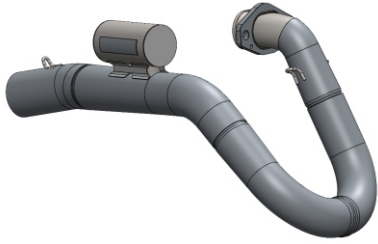


*You must know how to remove and replace your stock exhaust in order to install this product otherwise have it installed by a professional mechanic. Keep all stock parts from your existing system as some components may be necessary to install your new Yoshimura exhaust depending on the application. Read through all instructions before beginning installation. Exhaust system can be extremely hot. Let motorcycle cool down before beginning installation. Always wear hand and eye protection and take precautionary measures to avoid injury.*



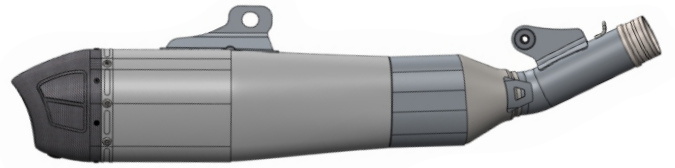
NOTE: IN THE STATE OF CALIFORNIA, IT IS ILLEGAL TO MODIFY THE EMISSION CONTROL SYSTEM, WHICH INCLUDES THE CARBURETORS OF ANY VEHICLE.

x1



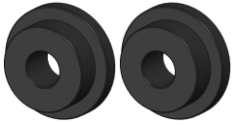
24473-104-2  
Yoshimura Header

x1



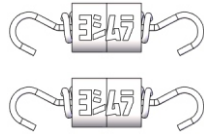
244730S520-RMA  
Yoshimura Muffler

x2



ALS-073  
Aluminum Spacer  
(for chassis mount)

x2



RACE-SPX-2  
Short Spring

x1



Z1024  
Rubber Grommet

x2



ALS-043  
Aluminum Spacer  
(for muffler bracket)

x1



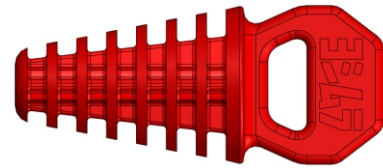
RACE-SPS-1  
Medium Spring

x1



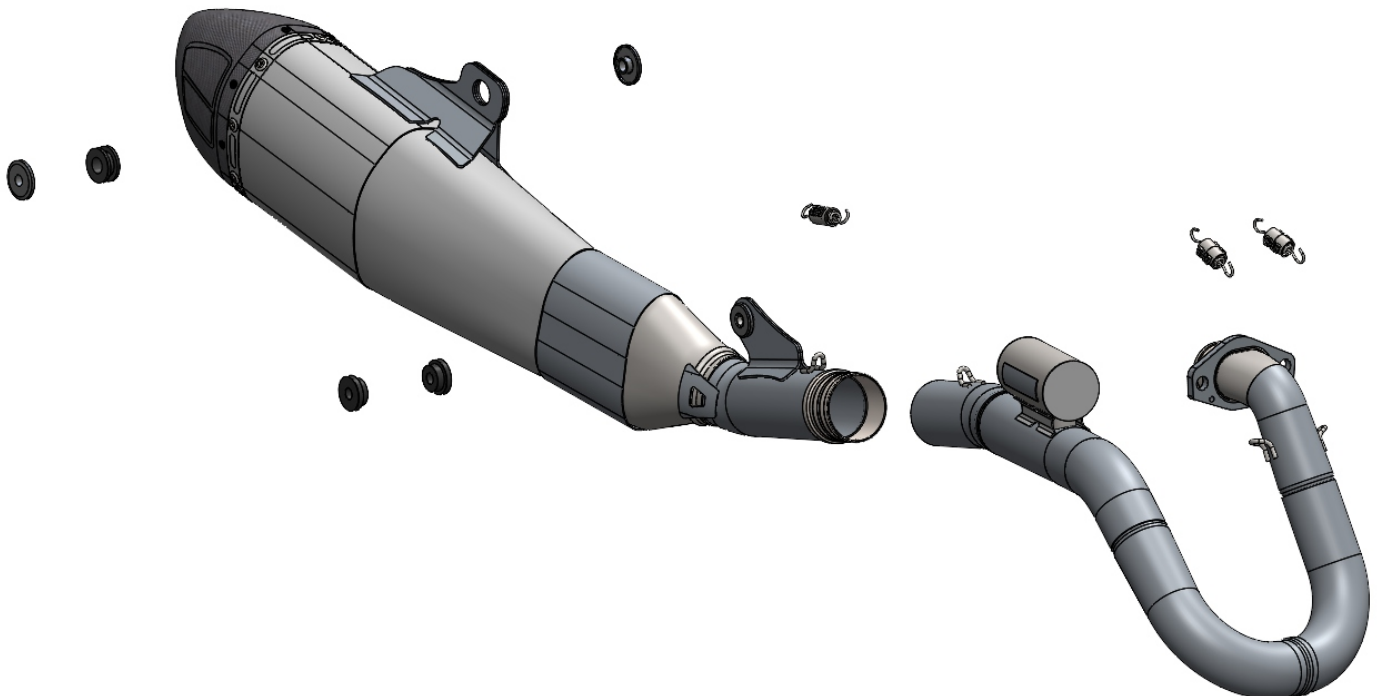
ST-200  
Spring Puller Tool

x1



347PLUG  
Muffler Wash Plug

### Assembly Diagram



**CAUTION:** Exhaust system can be extremely hot. Let motorcycle cool down before beginning installation. Always wear hand and eye protection and take precautionary measures to avoid injury.

**WARNING:** Always properly support vehicle with a stand and/or lift when servicing or performing any work. Unstable vehicles may present dangerous conditions and may cause property damage and/or personal injury.

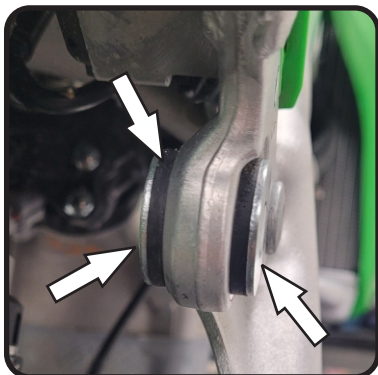
**NOTE:** Read through all instructions before beginning installation.

## Removal

1. Remove the right side panel by removing the two side panel bolts.
2. Loosen the stock exhaust clamp at muffler to header connection.
3. Remove the forward muffler chassis mount bolt.
4. While securely supporting the stock muffler assembly, remove the rear muffler mount bolt and carefully remove muffler from the stock header.
5. Due to limited space an open ended wrench or ratcheting wrench is recommended to remove header nuts. Remove the two header nuts and carefully remove the stock header.

Note: The stock exhaust port gasket will be re-used with the Yoshimura full-system. Inspect and replace if necessary.

6. Remove the spacers and rubber bushing from the forward chassis mount as they will not be used with the Yoshimura system.



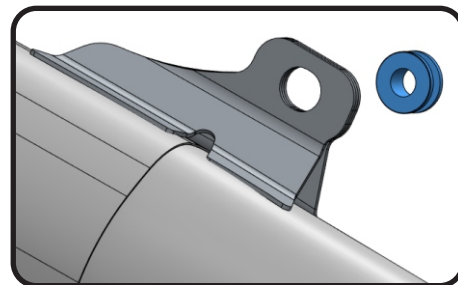
## Installation

1. Install 24473-104-2, Yoshimura header using the stock header nuts. Do not torque at this time.

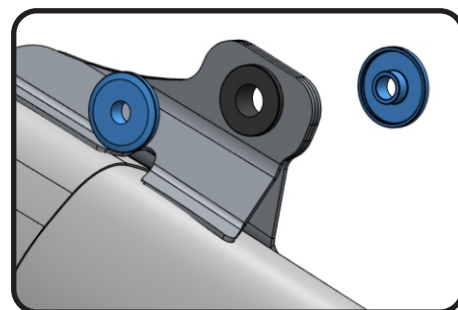
Note: It is recommended to hook RACE-SPX-2, short exhaust springs onto flange before installing header as it may be difficult to install springs after header has been installed.



2. Install Z1024, rubber grommet into Yoshimura muffler bracket.



3. Install ALS-043, aluminum spacers into frontside and backside of Z1024, rubber grommets on muffler bracket and muffler chassis mount bracket.



4. Install ALS-073, aluminum spacers into forward chassis mount.



5. Install muffler assembly onto header outlet and align forward chassis mount and muffler mount. Secure using stock muffler mount and chassis mount bolts. Do not torque at this time.
6. Install *RACE-SPS-1*, between muffler and header.
7. Torque header nuts to factory specifications.
8. Hook *RACE-SPX-2*, small exhaust springs from flange onto header.
9. Torque muffler mount bolt and forward chassis mount bolt to factory specification.
10. Re-install right side panel using reverse steps of removal.
11. Before starting motorcycle, check for proper clearance between new exhaust system and rear suspension (i.e. tire, swing arm, brakes, rear shock, and etc.) If any problem is found, please carefully follow through the installation steps again. If problem still persists, please call Yoshimura Tech Department at (800) 634-9166 / in CA (909) 628-4722.
12. It is recommended that the muffler and tailpipe be wiped down with rubbing alcohol to remove oil and fingerprints. This will help prevent tarnishing of the finish after the exhaust is heated up.

Note: After starting motorcycle, it is normal for new exhaust system and muffler to emit smoke until oil residue burns off.