



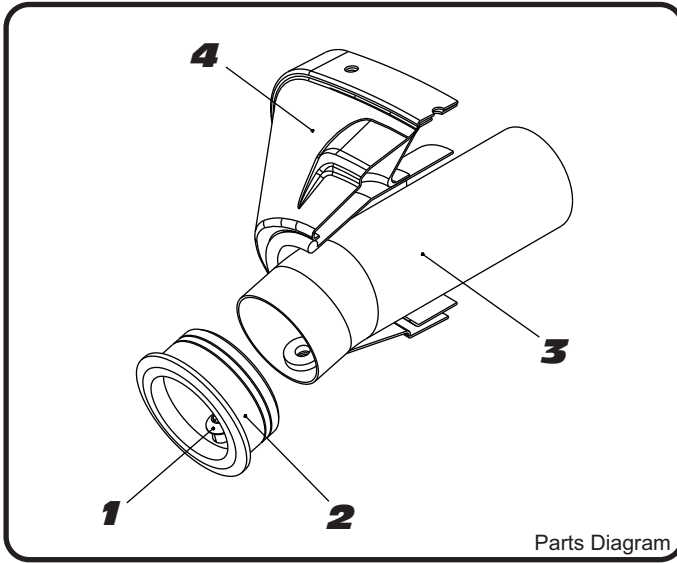
YOSHIMURA

RESEARCH&DEVELOPMENT OF AMERICA, INC.

5420 DANIELS STREET SUITE A, CHINO, CA 91710 · (800) 634-9166 · (909) 628-4722 · FAX (909) 591-2198

www.yoshimura-rd.com

INS-09-K | YOSHIMURA RS5/RS8 LOW VOLUME INSERT KIT



Parts Diagram

NO.	DESCRIPTION	QTY	PART #
1	6mm X 12mm Button Head Cap Screw	1	M6X12BHS
2	RS8 Aluminum 1.625" Ring	1	RS8-RING-1625
3	99dB Sound Insert	1	INS-N
4	Yoshimura Exhaust	**	**
**	6mm Tooth Lock Washer	1	6MMLCKWSHR-TH

1. Punch out insert hole tab on inner endcap assembly.
2. Install sound insert into muffler and secure using supplied button head screw and tooth lock washer.
NOTE: It is recommended that a low strength "Loc-tite" is used on the small allen head bolt.
3. Scan QR code for insert removal/installation instructions video.



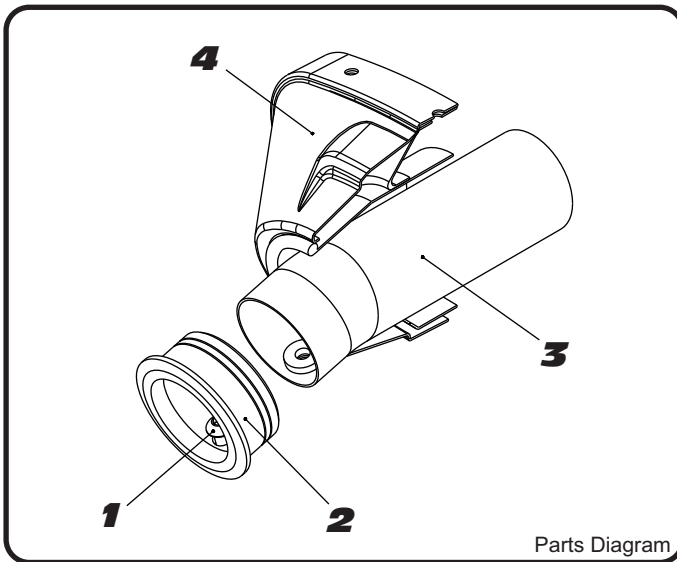
YOSHIMURA

RESEARCH&DEVELOPMENT OF AMERICA, INC.

5420 DANIELS STREET SUITE A, CHINO, CA 91710 · (800) 634-9166 · (909) 628-4722 · FAX (909) 591-2198

www.yoshimura-rd.com

INS-09-K | YOSHIMURA RS5/RS8 LOW VOLUME INSERT KIT



Parts Diagram

NO.	DESCRIPTION	QTY	PART #
1	6mm X 12mm Button Head Cap Screw	1	M6X12BHS
2	RS8 Aluminum 1.625" Ring	1	RS8-RING-1625
3	99dB Sound Insert	1	INS-N
4	Yoshimura Exhaust	**	**
**	6mm Tooth Lock Washer	1	6MMLCKWSHR-TH

1. Punch out insert hole tab on inner endcap assembly.
2. Install sound insert into muffler and secure using supplied button head screw and tooth lock washer.
NOTE: It is recommended that a low strength "Loc-tite" is used on the small allen head bolt.
3. Scan QR code for insert removal/installation instructions video.

